

Datasheet for ABIN2856421
anti-Actin-Like 8 antibody

3 Images

[Go to Product page](#)

Overview

Quantity:	100 µL
Target:	Actin-Like 8 (ACTL8)
Reactivity:	Human
Host:	Rabbit
Clonality:	Polyclonal
Conjugate:	This Actin-Like 8 antibody is un-conjugated
Application:	Western Blotting (WB), Immunocytochemistry (ICC), Immunohistochemistry (Paraffin-embedded Sections) (IHC (p)), Immunofluorescence (IF)

Product Details

Immunogen:	Recombinant protein encompassing a sequence within the center region of human ACTL8. The exact sequence is proprietary.
Isotype:	IgG
Cross-Reactivity:	Human
Characteristics:	Rabbit Polyclonal antibody to ACTL8 (actin-like 8) ACTL8 antibody
Purification:	Purified by antigen-affinity chromatography.

Target Details

Target:	Actin-Like 8 (ACTL8)
Alternative Name:	actin like 8 (ACTL8 Products)

Target Details

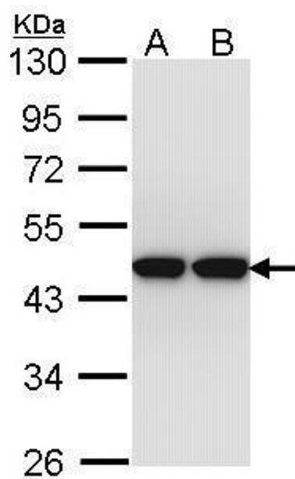
Background:	Cellular Localization: Cytoplasm , cytoskeleton
Molecular Weight:	41 kDa
Gene ID:	81569
UniProt:	Q9H568

Application Details

Application Notes:	WB: 1:500-1:3000. ICC/IF: 1:100-1:1000. IHC-P: 1:100-1:1000. Optimal dilutions/concentrations should be determined by the researcher. Not tested in other applications.
Comment:	Positive Control: HepG2 , Molt-4
Restrictions:	For Research Use only

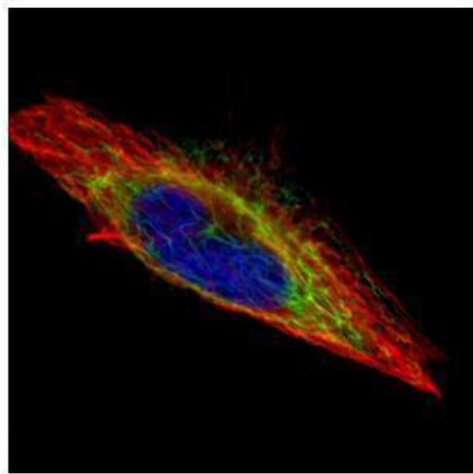
Handling

Format:	Liquid
Concentration:	0.71 mg/mL
Buffer:	0.1M Tris-Glycine (pH 7), 10 % Glycerol, 0.01 % Thimerosal
Preservative:	Thimerosal (Merthiolate)
Precaution of Use:	This product contains Thimerosal (Merthiolate): a POISONOUS AND HAZARDOUS SUBSTANCE which should be handled by trained staff only.
Storage:	4 °C,-20 °C
Storage Comment:	Store as concentrated solution. Centrifuge briefly prior to opening vial. For short-term storage (1-2 weeks), store at 4°C. For long-term storage, aliquot and store at -20°C or below. Avoid multiple freeze-thaw cycles.



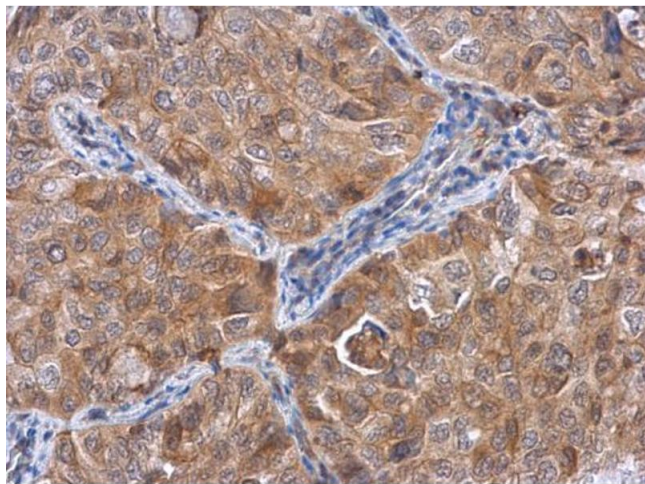
Western Blotting

Image 1. WB Image Sample (30 ug of whole cell lysate) A: Hep G2 , B: Molt-4 , 10% SDS PAGE antibody diluted at 1:1000



Immunofluorescence

Image 2. ICC/IF Image Confocal immunofluorescence analysis (Olympus FV10i) of methanol-fixed HeLa, using ACTL8, antibody (Green) at 1:500 dilution. Alpha-tubulin filaments were labeled with (Red) at 1:2000.



Immunohistochemistry

Image 3. IHC-P Image ACTL8 antibody detects ACTL8 protein at cytoplasm in human lung cancer by immunohistochemical analysis. Sample: Paraffin-embedded human lung cancer. ACTL8 antibody , diluted at 1:500.