

Datasheet for ABIN2856425

**anti-C14orf94 antibody**[Go to Product page](#)**2** Images

## Overview

Quantity:	100 µL
Target:	C14orf94 (HAUS4)
Reactivity:	Human
Host:	Rabbit
Clonality:	Polyclonal
Conjugate:	This C14orf94 antibody is un-conjugated
Application:	Western Blotting (WB), Immunohistochemistry (Paraffin-embedded Sections) (IHC (p))

## Product Details

Immunogen:	Recombinant protein encompassing a sequence within the center region of human HAUS4. The exact sequence is proprietary.
Isotype:	IgG
Cross-Reactivity:	Human
Characteristics:	Rabbit Polyclonal antibody to HAUS4 (HAUS augmin-like complex, subunit 4) HAUS4 antibody
Purification:	Purified by antigen-affinity chromatography.

## Target Details

Target:	C14orf94 (HAUS4)
Alternative Name:	HAUS augmin like complex subunit 4 ( <a href="#">HAUS4 Products</a> )

## Target Details

**Background:** This gene encodes a subunit of the centrosome complex termed the human augmin complex. The encoded protein localizes to the spindle microtubules and may play a role in mitotic spindle assembly and maintenance of centrosome integrity during cell division. Alternate splicing results in multiple transcript variants. A pseudogene of this gene is found on chromosome 1.

Cellular Localization: Centrosome , Spindle

**Molecular Weight:** 42 kDa

**Gene ID:** 54930

**UniProt:** [Q9H6D7](#)

## Application Details

**Application Notes:** WB: 1:500-1:3000. IHC-P: 1:100-1:1000. Optimal dilutions/concentrations should be determined by the researcher. Not tested in other applications.

**Comment:** Positive Control: Jurkat

**Restrictions:** For Research Use only

## Handling

**Format:** Liquid

**Concentration:** 1 mg/mL

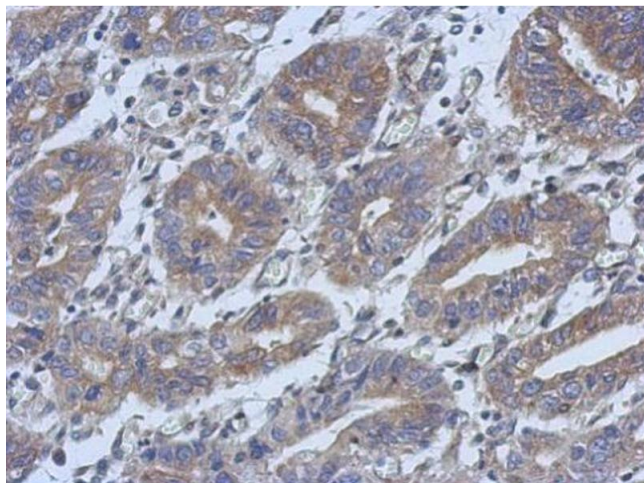
**Buffer:** 0.1M Tris-Glycine ( pH 7), 20 % Glycerol, 0.01 % Thimerosal

**Preservative:** Thimerosal (Merthiolate)

**Precaution of Use:** This product contains Thimerosal (Merthiolate): a POISONOUS AND HAZARDOUS SUBSTANCE which should be handled by trained staff only.

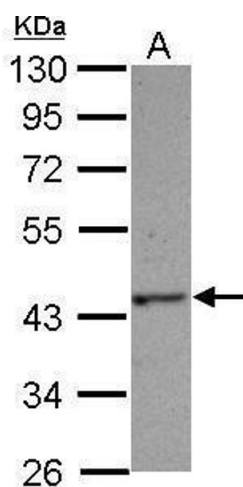
**Storage:** 4 °C,-20 °C

**Storage Comment:** Store as concentrated solution. Centrifuge briefly prior to opening vial. For short-term storage (1-2 weeks), store at 4°C. For long-term storage, aliquot and store at -20°C or below. Avoid multiple freeze-thaw cycles.



#### Immunohistochemistry

**Image 1.** IHC-P Image Immunohistochemical analysis of paraffin-embedded human colon carcinoma, using C14orf94, antibody at 1:500 dilution.



#### Western Blotting

**Image 2.** WB Image Sample (30 ug of whole cell lysate) A: Jurkat 10% SDS PAGE antibody diluted at 1:1000