

Datasheet for ABIN2856428

anti-Apolipoprotein M antibody



[Go to Product page](#)

1 Image

Overview

Quantity:	100 µL
Target:	Apolipoprotein M (APOM)
Reactivity:	Human
Host:	Rabbit
Clonality:	Polyclonal
Conjugate:	This Apolipoprotein M antibody is un-conjugated
Application:	Western Blotting (WB)

Product Details

Immunogen:	Recombinant protein encompassing a sequence within the center region of human Apolipoprotein M. The exact sequence is proprietary.
Isotype:	IgG
Cross-Reactivity:	Human
Characteristics:	Rabbit Polyclonal antibody to Apolipoprotein M (apolipoprotein M) Apolipoprotein M antibody
Purification:	Purified by antigen-affinity chromatography.

Target Details

Target:	Apolipoprotein M (APOM)
Alternative Name:	apolipoprotein M (APOM Products)

Target Details

Background:	<p>The protein encoded by this gene is an apolipoprotein and member of the lipocalin protein family. It is found associated with high density lipoproteins and to a lesser extent with low density lipoproteins and triglyceride-rich lipoproteins. The encoded protein is secreted through the plasma membrane but remains membrane-bound, where it is involved in lipid transport.</p> <p>Two transcript variants encoding two different isoforms have been found for this gene, but only one of them has been fully characterized.</p> <p>Cellular Localization: Secreted</p>
-------------	--

Molecular Weight:	21 kDa
-------------------	--------

Gene ID:	55937
----------	-------

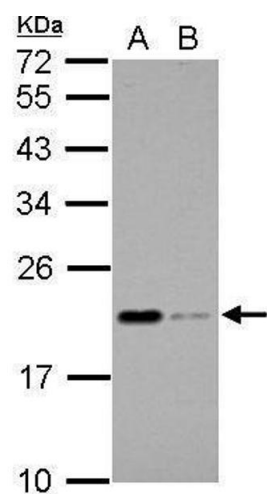
UniProt:	O95445
----------	------------------------

Application Details

Application Notes:	WB: 1:500-1:3000. Optimal dilutions/concentrations should be determined by the researcher. Not tested in other applications.
Comment:	Positive Control: THP-1 , HL-60
Restrictions:	For Research Use only

Handling

Format:	Liquid
Concentration:	0.7 mg/mL
Buffer:	0.1M Tris-Glycine (pH 7), 10 % Glycerol, 0.01 % Thimerosal
Preservative:	Thimerosal (Merthiolate)
Precaution of Use:	This product contains Thimerosal (Merthiolate): a POISONOUS AND HAZARDOUS SUBSTANCE which should be handled by trained staff only.
Storage:	4 °C,-20 °C
Storage Comment:	Store as concentrated solution. Centrifuge briefly prior to opening vial. For short-term storage (1-2 weeks), store at 4°C. For long-term storage, aliquot and store at -20°C or below. Avoid multiple freeze-thaw cycles.



Western Blotting

Image 1. WB Image Sample (30 ug of whole cell lysate) A: THP-1 B: HL-60 12% SDS PAGE antibody diluted at 1:1000