



[Go to Product page](#)

Datasheet for ABIN2856435  
**anti-THUMPD3 antibody**

2 Images

### Overview

Quantity:	100 µL
Target:	THUMPD3
Reactivity:	Human
Host:	Rabbit
Clonality:	Polyclonal
Conjugate:	This THUMPD3 antibody is un-conjugated
Application:	Western Blotting (WB), Immunohistochemistry (Paraffin-embedded Sections) (IHC (p))

### Product Details

Immunogen:	Recombinant protein encompassing a sequence within the center region of human THUMPD3. The exact sequence is proprietary.
Isotype:	IgG
Cross-Reactivity:	Human
Characteristics:	Rabbit Polyclonal antibody to THUMPD3 (THUMP domain containing 3) THUMPD3 antibody [N1N3]
Purification:	Purified by antigen-affinity chromatography.

### Target Details

Target:	THUMPD3
Alternative Name:	THUMP domain containing 3 ( <a href="#">THUMPD3 Products</a> )

## Target Details

---

Molecular Weight: 57 kDa

Gene ID: 25917

UniProt: [Q9BV44](#)

## Application Details

---

Application Notes: WB: 1:500-1:3000. IHC-P: 1:100-1:1000. Optimal dilutions/concentrations should be determined by the researcher. Not tested in other applications.

Comment: Positive Control: HeLaS3

Restrictions: For Research Use only

## Handling

---

Format: Liquid

Concentration: 1 mg/mL

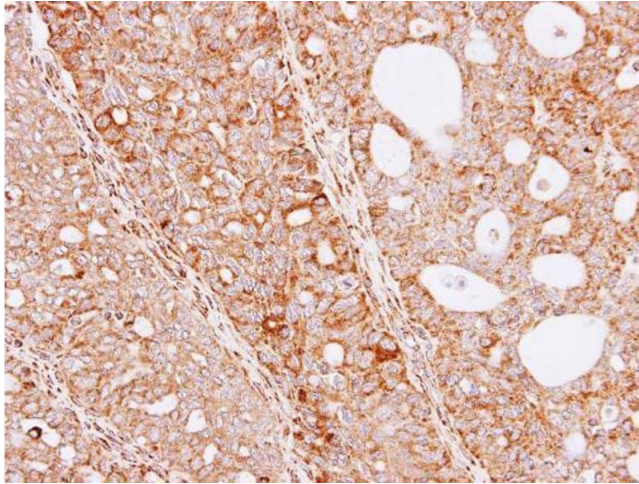
Buffer: 0.1M Tris-Glycine ( pH 7), 10 % Glycerol, 0.01 % Thimerosal

Preservative: Thimerosal (Merthiolate)

Precaution of Use: This product contains Thimerosal (Merthiolate): a POISONOUS AND HAZARDOUS SUBSTANCE which should be handled by trained staff only.

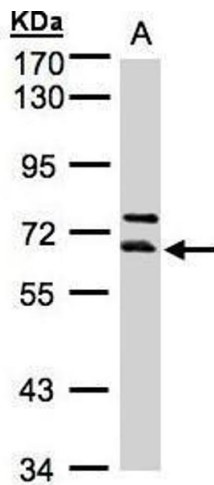
Storage: 4 °C, -20 °C

Storage Comment: Store as concentrated solution. Centrifuge briefly prior to opening vial. For short-term storage (1-2 weeks), store at 4°C. For long-term storage, aliquot and store at -20°C or below. Avoid multiple freeze-thaw cycles.



### Immunohistochemistry

**Image 1.** IHC-P Image Immunohistochemical analysis of paraffin-embedded Serous OVCA xenograft, using THUMPD3, antibody at 1:100 dilution.



### Western Blotting

**Image 2.** WB Image Sample(30 ug whole cell lysate) A:HeLa S3, 7.5% SDS PAGE antibody diluted at 1:1000