



[Go to Product page](#)

Datasheet for ABIN2856441

## anti-CBFB antibody

### 1 Image

#### Overview

Quantity:	100 µL
Target:	CBFB
Reactivity:	Human
Host:	Rabbit
Clonality:	Polyclonal
Conjugate:	This CBFB antibody is un-conjugated
Application:	Western Blotting (WB)

#### Product Details

Immunogen:	Recombinant protein encompassing a sequence within the center region of human CBFb. The exact sequence is proprietary.
Isotype:	IgG
Cross-Reactivity:	Human
Characteristics:	Rabbit polyclonal antibody to v (core-binding factor, beta subunit) CBFb antibody [N1C3]
Purification:	Purified by antigen-affinity chromatography.

#### Target Details

Target:	CBFB
Alternative Name:	core-binding factor subunit beta ( <a href="#">CBFB Products</a> )

## Target Details

---

**Background:** The protein encoded by this gene is the beta subunit of a heterodimeric core-binding transcription factor belonging to the PEBP2/CBF transcription factor family which master-regulates a host of genes specific to hematopoiesis (e.g., RUNX1) and osteogenesis (e.g., RUNX2). The beta subunit is a non-DNA binding regulatory subunit, it allosterically enhances DNA binding by alpha subunit as the complex binds to the core site of various enhancers and promoters, including murine leukemia virus, polyomavirus enhancer, T-cell receptor enhancers and GM-CSF promoters. Alternative splicing generates two mRNA variants, each encoding a distinct carboxyl terminus. In some cases, a pericentric inversion of chromosome 16 [inv(16)(p13q22)] produces a chimeric transcript consisting of the N terminus of core-binding factor beta in a fusion with the C-terminal portion of the smooth muscle myosin heavy chain 11. This chromosomal rearrangement is associated with acute myeloid leukemia of the M4Eo subtype. Two transcript variants encoding different isoforms have been found for this gene.

Cellular Localization: Nucleus

---

**Molecular Weight:** 22 kDa

---

**Gene ID:** 865

---

**UniProt:** [Q13951](#)

---

**Pathways:** [Regulation of Lipid Metabolism by PPARalpha](#)

## Application Details

---

**Application Notes:** WB: 1:500-1:3000. Optimal dilutions/concentrations should be determined by the researcher. Not tested in other applications.

---

**Comment:** Positive Control: 293T , Raji

---

**Restrictions:** For Research Use only

## Handling

---

**Format:** Liquid

---

**Concentration:** 1 mg/mL

---

**Buffer:** 0.1M Tris-Glycine ( pH 7), 10 % Glycerol, 0.01 % Thimerosal

---

**Preservative:** Thimerosal (Merthiolate)

---

**Precaution of Use:** This product contains Thimerosal (Merthiolate): a POISONOUS AND HAZARDOUS SUBSTANCE

---

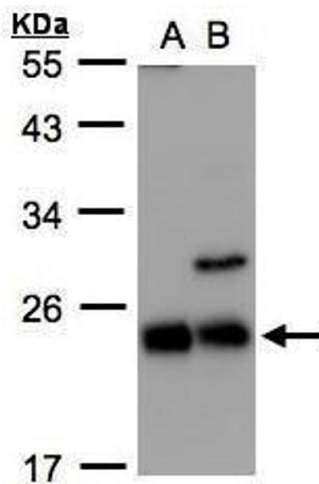
## Handling

which should be handled by trained staff only.

Storage: 4 °C,-20 °C

Storage Comment: Store as concentrated solution. Centrifuge briefly prior to opening vial. For short-term storage (1-2 weeks), store at 4°C. For long-term storage, aliquot and store at -20°C or below. Avoid multiple freeze-thaw cycles.

## Images



### Western Blotting

**Image 1.** WB Image Sample(30 ug whole cell lysate) A:293T  
B:Raji , 12% SDS PAGE antibody diluted at 1:1000