

Datasheet for ABIN2856443  
**anti-MMACHC antibody (Center)**

## 5 Images

[Go to Product page](#)

## Overview

Quantity:	100 µL
Target:	MMACHC
Binding Specificity:	Center
Reactivity:	Human, Mouse
Host:	Rabbit
Clonality:	Polyclonal
Conjugate:	This MMACHC antibody is un-conjugated
Application:	Western Blotting (WB), Immunofluorescence (IF), Immunohistochemistry (Paraffin-embedded Sections) (IHC (p)), Immunocytochemistry (ICC)

## Product Details

Immunogen:	Recombinant protein encompassing a sequence within the center region of human MMACHC. The exact sequence is proprietary.
Isotype:	IgG
Cross-Reactivity:	Cow (Bovine)
Cross-Reactivity (Details):	Bovine (90 %)
Characteristics:	Rabbit Polyclonal antibody to MMACHC (methylmalonic aciduria (cobalamin deficiency) cblC type, with homocystinuria) MMACHC antibody [N1C2]
Purification:	Purified by antigen-affinity chromatography.

## Target Details

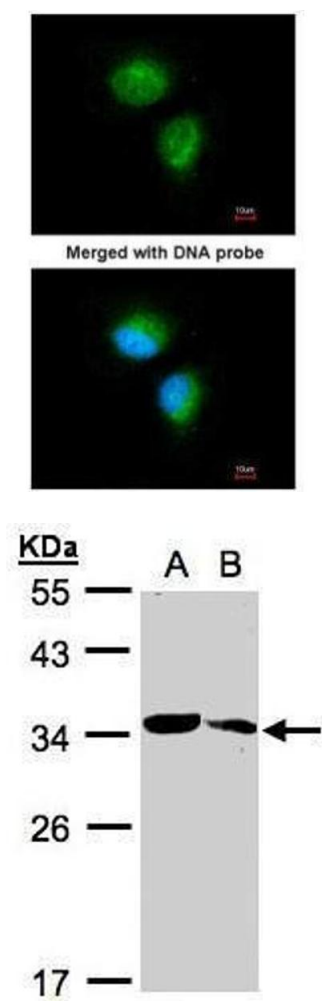
Target:	MMACHC
Alternative Name:	MMACHC ( <a href="#">MMACHC Products</a> )
Background:	The exact function of the protein encoded by this gene is not known, however, its C-terminal region shows similarity to TonB, a bacterial protein involved in energy transduction for cobalamin (vitamin B12) uptake. Hence, it is postulated that this protein may have a role in the binding and intracellular trafficking of cobalamin. Mutations in this gene are associated with methylmalonic aciduria and homocystinuria type cblC.
Molecular Weight:	32 kDa
Gene ID:	25974

## Application Details

Application Notes:	Suggested dilution Reference ICC/IF 1:100-1:1000* IHC (Formalin-fixed paraffin-embedded sections) 1:100-1:1000* Western blot 1:500-1:3000* Not tested in other applications. *Optimal dilutions/concentrations should be determined by the researcher.Suggested dilutionReferenceICC/IF1:100-1:1000* IHC (Formalin-fixed paraffin-embedded sections)1:100-1:1000* Western blot1:500-1:3000*
Comment:	Positive Control: 293T , A431 , H1299 , HeLaS3 , HepG2 , Raji , mouse brain
Restrictions:	For Research Use only

## Handling

Format:	Liquid
Concentration:	1 mg/mL
Buffer:	0.1M Tris, 0.1M Glycine, 10 % Glycerol ( pH 7). 0.01 % Thimerosal was added as a preservative.
Preservative:	Thimerosal (Merthiolate)
Precaution of Use:	This product contains Thimerosal (Merthiolate): a POISONOUS AND HAZARDOUS SUBSTANCE which should be handled by trained staff only.
Storage:	-20 °C
Storage Comment:	Keep as concentrated solution. Aliquot and store at -20°C or below. Avoid multiple freeze-thaw cycles.

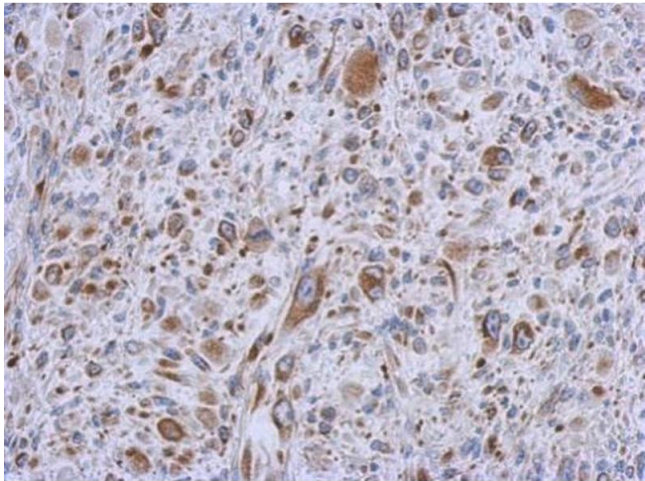


**Immunofluorescence**

**Image 1.** ICC/IF Image Immunofluorescence analysis of paraformaldehyde-fixed HeLa, using MMACHC, antibody at 1:100 dilution.

**Western Blotting**

**Image 2.** WB Image Sample(30 ug whole cell lysate) A:293T B:Raji , 12% SDS PAGE antibody diluted at 1:1000



**Immunohistochemistry**

**Image 3.** IHC-P Image Immunohistochemical analysis of paraffin-embedded C2C12 xenograft, using MMACHC, antibody at 1:500 dilution.

Please check the [product details page](#) for more images. Overall 5 images are available for ABIN2856443.