



[Go to Product page](#)

Datasheet for ABIN2856445  
**anti-CORO1B antibody**

3 Images

Overview

Quantity:	100 µL
Target:	CORO1B
Reactivity:	Human
Host:	Rabbit
Clonality:	Polyclonal
Application:	Western Blotting (WB), Immunohistochemistry (Paraffin-embedded Sections) (IHC (p))

Product Details

Immunogen:	Recombinant protein encompassing a sequence within the center region of human Coronin 1B. The exact sequence is proprietary.
Isotype:	IgG
Cross-Reactivity:	Human, Mouse
Characteristics:	Rabbit Polyclonal antibody to Coronin 1B (coronin, actin binding protein, 1B) Coronin 1B antibody [N1N3]
Purification:	Purified by antigen-affinity chromatography.

Target Details

Target:	CORO1B
Alternative Name:	coronin 1B ( <a href="#">CORO1B Products</a> )
Background:	Members of the coronin family, such as CORO1B, are WD repeat-containing actin-binding proteins that regulate cell motility (Cai et al., 2005 [PubMed 16027158]).[supplied by OMIM]

## Target Details

---

Molecular Weight: 54 kDa

Gene ID: 57175

UniProt: [Q9BR76](#)

## Application Details

---

Application Notes: WB: 1:500-1:3000. IHC-P: 1:100-1:1000. Optimal dilutions/concentrations should be determined by the researcher. Not tested in other applications.

Comment: Positive Control: 293T , NIH-3T3

Restrictions: For Research Use only

## Handling

---

Format: Liquid

Concentration: 1 mg/mL

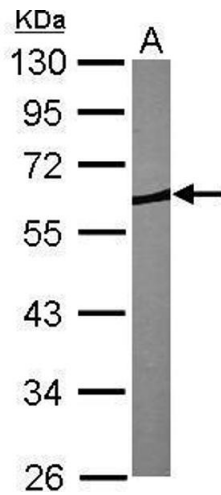
Buffer: 0.1M Tris-Glycine ( pH 7), 10 % Glycerol, 0.01 % Thimerosal

Preservative: Thimerosal (Merthiolate)

Precaution of Use: This product contains Thimerosal (Merthiolate): a POISONOUS AND HAZARDOUS SUBSTANCE which should be handled by trained staff only.

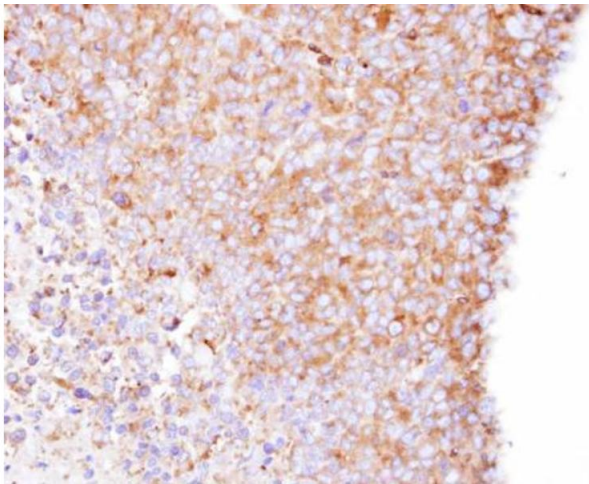
Storage: 4 °C,-20 °C

Storage Comment: Store as concentrated solution. Centrifuge briefly prior to opening vial. For short-term storage (1-2 weeks), store at 4°C. For long-term storage, aliquot and store at -20°C or below. Avoid multiple freeze-thaw cycles.



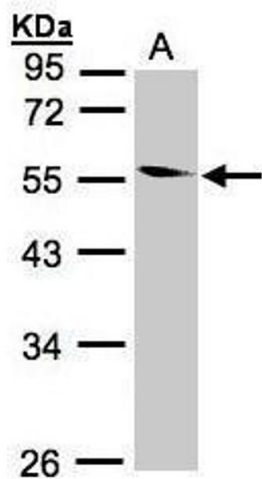
### Western Blotting

**Image 1.** WB Image Sample (30 ug of whole cell lysate) A: NIH-3T3 10% SDS PAGE antibody diluted at 1:1000



### Immunohistochemistry

**Image 2.** IHC-P Image Immunohistochemical analysis of paraffin-embedded H1299 xenograft, using Coronin-1B, antibody at 1:500 dilution.



### Western Blotting

**Image 3.** WB Image Sample(30 ug whole cell lysate) A:293T 10% SDS PAGE antibody diluted at 1:1000