

Datasheet for ABIN2856448  
**anti-HACL1 antibody (C-Term)**

## 5 Images

[Go to Product page](#)

## Overview

Quantity:	100 µL
Target:	HACL1
Binding Specificity:	C-Term
Reactivity:	Human, Mouse
Host:	Rabbit
Clonality:	Polyclonal
Conjugate:	This HACL1 antibody is un-conjugated
Application:	Western Blotting (WB), Immunohistochemistry (Paraffin-embedded Sections) (IHC (p)), Immunofluorescence (IF), Immunocytochemistry (ICC)

## Product Details

Immunogen:	Recombinant protein encompassing a sequence within the C-terminus region of human HACL1. The exact sequence is proprietary.
Isotype:	IgG
Characteristics:	Rabbit Polyclonal antibody to HACL1 (2-hydroxyacyl-CoA lyase 1) HACL1 antibody
Purification:	Purified by antigen-affinity chromatography.

## Target Details

Target:	HACL1
Alternative Name:	HACL1 ( <a href="#">HACL1 Products</a> )

## Target Details

Background: Catalyzes a carbon-carbon cleavage reaction, cleaves a 2-hydroxy-3-methylacyl-CoA into formyl-CoA and a 2-methyl-branched fatty aldehyde.

Cellular Localization: Peroxisome

Molecular Weight: 64 kDa

Gene ID: 26061

Pathways: [Monocarboxylic Acid Catabolic Process](#)

## Application Details

Application Notes: Suggested dilution Reference ICC/IF 1:100-1:1000\* IHC (Formalin-fixed paraffin-embedded sections) 1:100-1:1000\* Western blot 1:500-1:3000\* Not tested in other applications. \*Optimal dilutions/concentrations should be determined by the researcher.Suggested dilutionReferenceICC/IF1:100-1:1000\* IHC (Formalin-fixed paraffin-embedded sections)1:100-1:1000\* Western blot1:500-1:3000\*

Comment: Positive Control: 293T , mouse liver

Restrictions: For Research Use only

## Handling

Format: Liquid

Concentration: 1 mg/mL

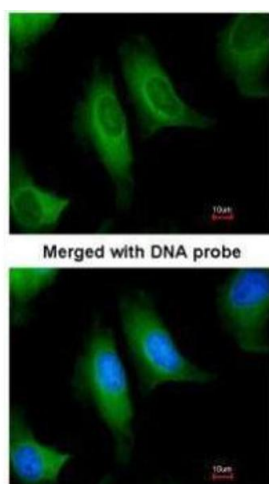
Buffer: 0.1M Tris, 0.1M Glycine, 10 % Glycerol ( pH 7). 0.01 % Thimerosal was added as a preservative.

Preservative: Thimerosal (Merthiolate)

Precaution of Use: This product contains Thimerosal (Merthiolate): a POISONOUS AND HAZARDOUS SUBSTANCE which should be handled by trained staff only.

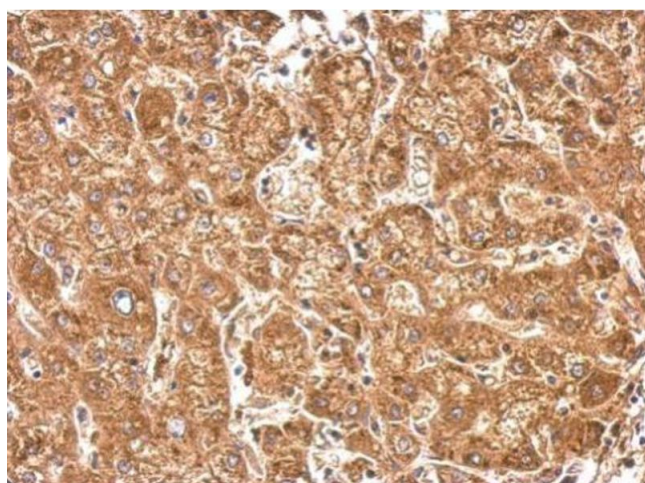
Storage: -20 °C

Storage Comment: Keep as concentrated solution. Aliquot and store at -20°C or below. Avoid multiple freeze-thaw cycles.



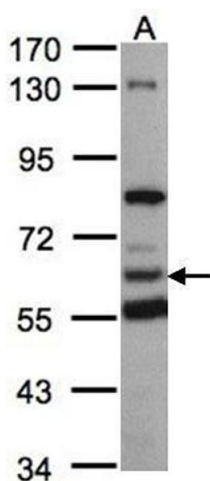
#### Immunofluorescence

**Image 1.** ICC/IF Image Immunofluorescence analysis of paraformaldehyde-fixed HeLa, using HACL1, antibody at 1:200 dilution.



#### Immunohistochemistry

**Image 2.** IHC-P Image HACL1 antibody detects HACL1 protein at cytosol on human hepatoma by immunohistochemical analysis. Sample: Paraffin-embedded hepatoma. HACL1 antibody, dilution: 1:500.



#### Western Blotting

**Image 3.** WB Image Sample(30 ug whole cell lysate) A:293T 7.5% SDS PAGE antibody diluted at 1:1000

Please check the [product details page](#) for more images. Overall 5 images are available for ABIN2856448.