

Datasheet for ABIN2856450
anti-SLU7 antibody (C-Term)

3 Images

[Go to Product page](#)

Overview

Quantity:	100 µL
Target:	SLU7
Binding Specificity:	C-Term
Reactivity:	Human
Host:	Rabbit
Clonality:	Polyclonal
Conjugate:	This SLU7 antibody is un-conjugated
Application:	Western Blotting (WB), Immunohistochemistry (Paraffin-embedded Sections) (IHC (p)), Immunofluorescence (IF), Immunocytochemistry (ICC)

Product Details

Immunogen:	Recombinant protein encompassing a sequence within the C-terminus region of human SLU7. The exact sequence is proprietary.
Isotype:	IgG
Cross-Reactivity:	Human
Characteristics:	Rabbit Polyclonal antibody to SLU7 (SLU7 splicing factor homolog (S. cerevisiae)) SLU7 antibody
Purification:	Purified by antigen-affinity chromatography.

Target Details

Target:	SLU7
---------	------

Target Details

Alternative Name:	SLU7 homolog, splicing factor (SLU7 Products)
Target Type:	Influenza Protein
Background:	<p>Pre-mRNA splicing occurs in two sequential transesterification steps. The protein encoded by this gene is a splicing factor that has been found to be essential during the second catalytic step in the pre-mRNA splicing process. It associates with the spliceosome and contains a zinc knuckle motif that is found in other splicing factors and is involved in protein-nucleic acid and protein-protein interactions.</p> <p>Cellular Localization: Nucleus , Cytoplasm</p>
Molecular Weight:	68 kDa
Gene ID:	10569
UniProt:	O95391
Pathways:	Ribonucleoprotein Complex Subunit Organization , SARS-CoV-2 Protein Interactome

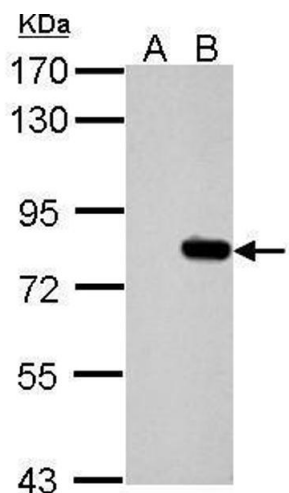
Application Details

Application Notes:	WB: 1:5000-1:20000. ICC/IF: 1:100-1:1000. IHC-P: 1:100-1:1000. Optimal dilutions/concentrations should be determined by the researcher. Not tested in other applications.
Comment:	Positive Control: 293T transfected SLU7 recombinant protein
Restrictions:	For Research Use only

Handling

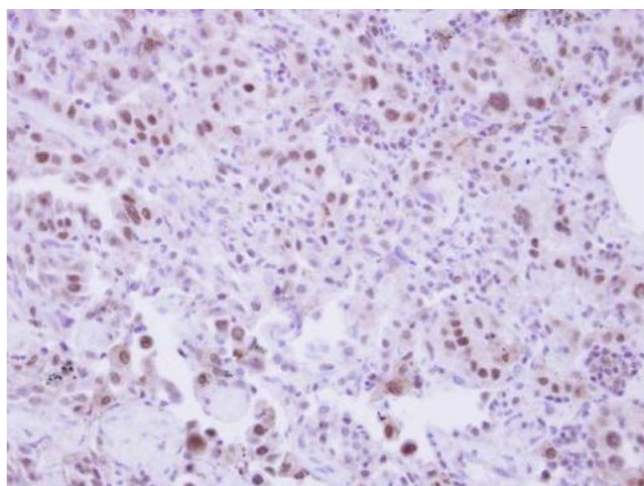
Format:	Liquid
Concentration:	1 mg/mL
Buffer:	0.1M Tris-Glycine (pH 7), 10 % Glycerol, 0.01 % Thimerosal
Preservative:	Thimerosal (Merthiolate)
Precaution of Use:	This product contains Thimerosal (Merthiolate): a POISONOUS AND HAZARDOUS SUBSTANCE which should be handled by trained staff only.
Storage:	4 °C,-20 °C
Storage Comment:	Store as concentrated solution. Centrifuge briefly prior to opening vial. For short-term storage

(1-2 weeks), store at 4°C. For long-term storage, aliquot and store at -20°C or below. Avoid multiple freeze-thaw cycles.



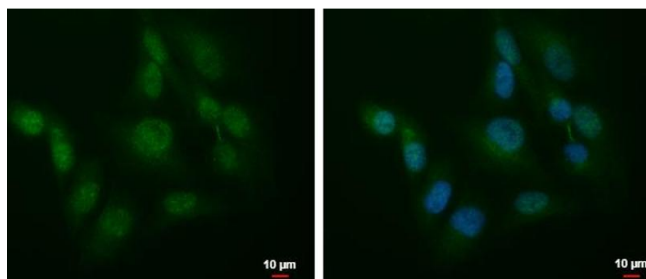
Western Blotting

Image 1. WB Image Sample (30 ug of whole cell lysate) A: Non-transfected 293T lysates B: hSLU7 transfected 293T lysates 7.5% SDS PAGE antibody diluted at 1:10000



Immunohistochemistry

Image 2. IHC-P Image Immunohistochemical analysis of paraffin-embedded human lung adenocarcinoma, using SLU7, antibody at 1:250 dilution.



Immunofluorescence

Image 3. ICC/IF Image SLU7 antibody detects SLU7 protein at cytoplasm and nucleus by immunofluorescent analysis. Sample: HeLa cells were fixed in 4% paraformaldehyde at RT for 15 min. Green: SLU7 protein stained by SLU7 antibody, diluted at 1:1000. Blue: Hoechst 33342 staining. Scale bar = 10 μm.