

Datasheet for ABIN2856451

**anti-m1ip1 antibody**

3 Images

[Go to Product page](#)

## Overview

Quantity:	100 µL
Target:	m1ip1
Reactivity:	Human
Host:	Rabbit
Clonality:	Polyclonal
Conjugate:	This m1ip1 antibody is un-conjugated
Application:	Western Blotting (WB), Immunohistochemistry (Paraffin-embedded Sections) (IHC (p)), Immunofluorescence (IF), Immunocytochemistry (ICC)

## Product Details

Immunogen:	Recombinant protein encompassing a sequence within the center region of human MID1IP1. The exact sequence is proprietary.
Isotype:	IgG
Cross-Reactivity:	Human
Characteristics:	Rabbit Polyclonal antibody to MID1IP1 (MID1 interacting protein 1 (gastrulation specific G12 homolog (zebrafish))) MID1IP1 antibody
Purification:	Purified by antigen-affinity chromatography.

## Target Details

Target:	m1ip1
---------	-------

## Target Details

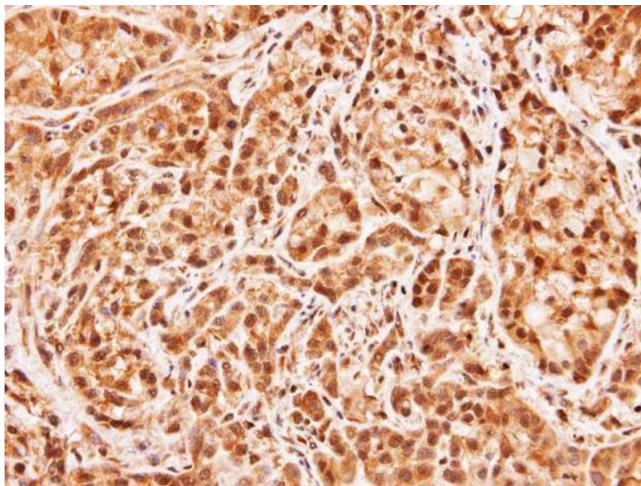
Alternative Name:	MID1 interacting protein 1 ( <a href="#">m1ip1 Products</a> )
Background:	Cellular Localization: Nucleus (By similarity) , Cytoplasm (By similarity)
Molecular Weight:	20 kDa
Gene ID:	58526
UniProt:	<a href="#">Q9NPA3</a>

## Application Details

Application Notes:	WB: 1:500-1:3000. ICC/IF: 1:100-1:1000. IHC-P: 1:100-1:1000. Optimal dilutions/concentrations should be determined by the researcher. Not tested in other applications.
Comment:	Positive Control: 293T , HepG2
Restrictions:	For Research Use only

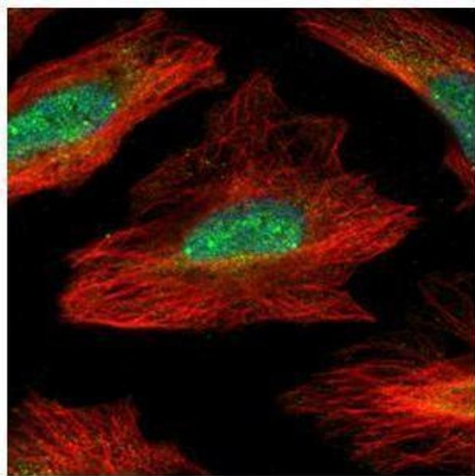
## Handling

Format:	Liquid
Concentration:	0.68 mg/mL
Buffer:	0.1M Tris-Glycine ( pH 7), 10 % Glycerol, 0.01 % Thimerosal
Preservative:	Thimerosal (Merthiolate)
Precaution of Use:	This product contains Thimerosal (Merthiolate): a POISONOUS AND HAZARDOUS SUBSTANCE which should be handled by trained staff only.
Storage:	4 °C,-20 °C
Storage Comment:	Store as concentrated solution. Centrifuge briefly prior to opening vial. For short-term storage (1-2 weeks), store at 4°C. For long-term storage, aliquot and store at -20°C or below. Avoid multiple freeze-thaw cycles.



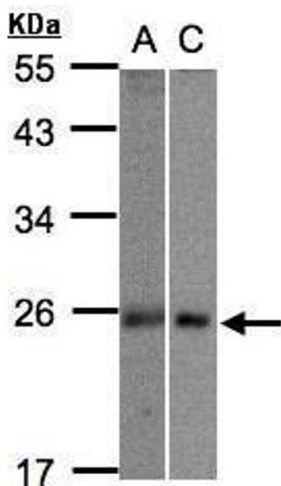
### Immunohistochemistry

**Image 1.** IHC-P Image Immunohistochemical analysis of paraffin-embedded A549 xenograft, using MID1IP1, antibody at 1:100 dilution.



### Immunofluorescence

**Image 2.** ICC/IF Image Confocal immunofluorescence analysis (Olympus FV10i) of paraformaldehyde-fixed HeLa, using MID1IP1, antibody (Green) at 1:500 dilution. Alpha-tubulin filaments were labeled with (Red) at 1:2000.



### Western Blotting

**Image 3.** WB Image Sample(30 ug whole cell lysate) A:293T B:Hep G2 , 12% SDS PAGE antibody diluted at 1:1000