



[Go to Product page](#)

Datasheet for ABIN2856457  
**anti-CABS1 antibody (Center)**

2 Images

Overview

Quantity:	100 µL
Target:	CABS1
Binding Specificity:	Center
Reactivity:	Human
Host:	Rabbit
Clonality:	Polyclonal
Conjugate:	This CABS1 antibody is un-conjugated
Application:	Western Blotting (WB), Immunohistochemistry (Paraffin-embedded Sections) (IHC (p))

Product Details

Immunogen:	Recombinant protein encompassing a sequence within the center region of human NYD-SP26. The exact sequence is proprietary.
Isotype:	IgG
Characteristics:	Rabbit Polyclonal antibody to NYD-SP26 (chromosome 4 open reading frame 35) NYD-SP26 antibody [N3C3]
Purification:	Purified by antigen-affinity chromatography.

Target Details

Target:	CABS1
Alternative Name:	NYD-SP26 ( <a href="#">CABS1 Products</a> )

## Target Details

---

Background: Cellular Localization: Cytoplasm , Mitochondrion

---

Molecular Weight: 43 kDa

---

Gene ID: 85438

---

## Application Details

---

Application Notes: Suggested dilution Reference IHC (Formalin-fixed paraffin-embedded sections) 1:100-1:1000\*  
Western blot 1:500-1:3000\* Not tested in other applications. \*Optimal dilutions/concentrations should be determined by the researcher.Suggested dilutionReferenceIHC (Formalin-fixed paraffin-embedded sections)1:100-1:1000\* Western blot1:500-1:3000\*

---

Comment: Positive Control: Molt-4

---

Restrictions: For Research Use only

---

## Handling

---

Format: Liquid

---

Concentration: 1 mg/mL

---

Buffer: 0.1M Tris, 0.1M Glycine, 10 % Glycerol ( pH 7). 0.01 % Thimerosal was added as a preservative.

---

Preservative: Thimerosal (Merthiolate)

---

Precaution of Use: This product contains Thimerosal (Merthiolate): a POISONOUS AND HAZARDOUS SUBSTANCE which should be handled by trained staff only.

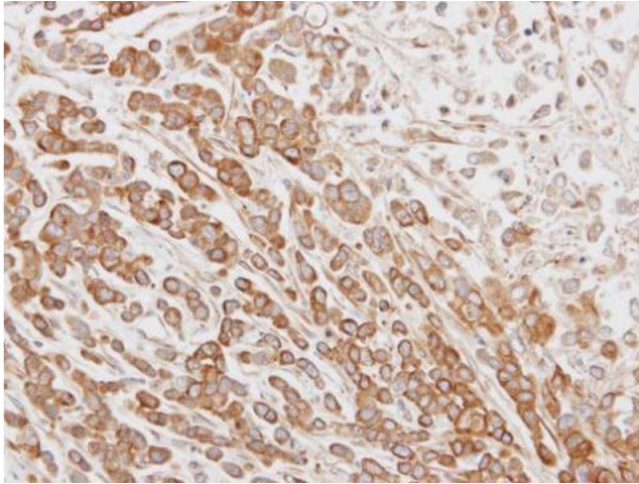
---

Storage: -20 °C

---

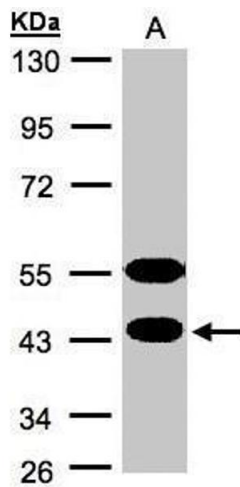
Storage Comment: Keep as concentrated solution. Aliquot and store at -20°C or below. Avoid multiple freeze-thaw cycles.

---



### Immunohistochemistry

**Image 1.** IHC-P Image Immunohistochemical analysis of paraffin-embedded MDA-MB468 xenograft, using NYD-SP26, antibody at 1:100 dilution.



### Western Blotting

**Image 2.** WB Image Sample(30 ug whole cell lysate) A:MOLT4 , 10% SDS PAGE antibody diluted at 1:1000