

Datasheet for ABIN2856461

anti-ZNF707 antibody

2 Images



[Go to Product page](#)

Overview

Quantity:	100 µL
Target:	ZNF707
Reactivity:	Human
Host:	Rabbit
Clonality:	Polyclonal
Application:	Western Blotting (WB), Immunohistochemistry (Paraffin-embedded Sections) (IHC (p))

Product Details

Immunogen:	Recombinant protein encompassing a sequence within the center region of human ZNF707. The exact sequence is proprietary.
Isotype:	IgG
Cross-Reactivity:	Human
Characteristics:	Rabbit polyclonal antibody to ZNF707 (zinc finger protein 707) ZNF707 antibody [N2C3]
Purification:	Purified by antigen-affinity chromatography.

Target Details

Target:	ZNF707
Alternative Name:	zinc finger protein 707 (ZNF707 Products)
Background:	May be involved in transcriptional regulation.

Target Details

Cellular Localization: Nucleus

Molecular Weight: 43 kDa

Gene ID: 286075

UniProt: [Q96C28](#)

Application Details

Application Notes: WB: 1:1000-1:10000. IHC-P: 1:100-1:1000. Optimal dilutions/concentrations should be determined by the researcher. Not tested in other applications.

Comment: Positive Control: HepG2

Restrictions: For Research Use only

Handling

Format: Liquid

Concentration: 1 mg/mL

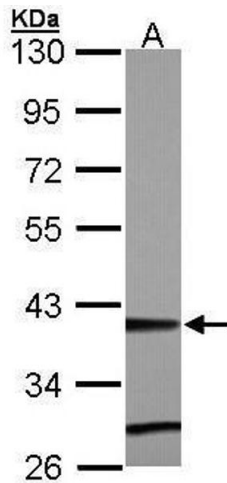
Buffer: 0.1M Tris-Glycine (pH 7), 10 % Glycerol, 0.01 % Thimerosal

Preservative: Thimerosal (Merthiolate)

Precaution of Use: This product contains Thimerosal (Merthiolate): a POISONOUS AND HAZARDOUS SUBSTANCE which should be handled by trained staff only.

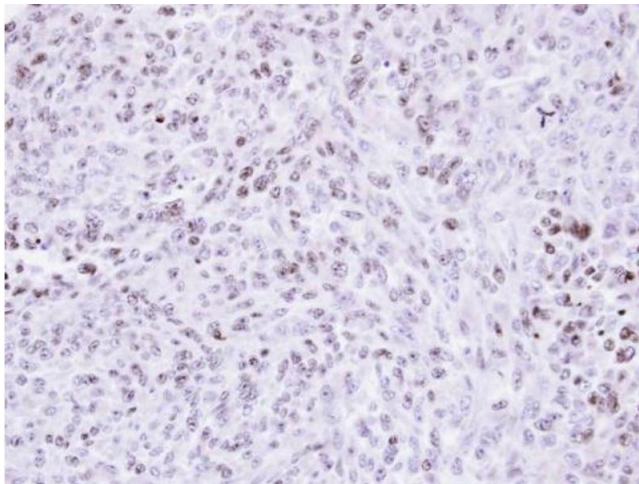
Storage: 4 °C, -20 °C

Storage Comment: Store as concentrated solution. Centrifuge briefly prior to opening vial. For short-term storage (1-2 weeks), store at 4°C. For long-term storage, aliquot and store at -20°C or below. Avoid multiple freeze-thaw cycles.



Western Blotting

Image 1. WB Image Sample (30 ug of whole cell lysate) A: Hep G2 , 10% SDS PAGE antibody diluted at 1:5000



Immunohistochemistry

Image 2. IHC-P Image Immunohistochemical analysis of paraffin-embedded H3347 xenograft , using ZNF707, antibody at 1:500 dilution.