

Datasheet for ABIN2856463  
**anti-SCMH1 antibody (Center)**

## 3 Images

[Go to Product page](#)

## Overview

Quantity:	100 µL
Target:	SCMH1
Binding Specificity:	Center
Reactivity:	Human
Host:	Rabbit
Clonality:	Polyclonal
Conjugate:	This SCM1 antibody is un-conjugated
Application:	Immunohistochemistry (Paraffin-embedded Sections) (IHC (p)), Immunocytochemistry (ICC), Immunofluorescence (IF)

## Product Details

Immunogen:	Recombinant protein encompassing a sequence within the center region of human SCM1. The exact sequence is proprietary.
Isotype:	IgG
Cross-Reactivity:	Cow (Bovine)
Cross-Reactivity (Details):	Bovine (100 %)
Characteristics:	Rabbit polyclonal antibody to SCM1 (sex comb on midleg homolog 1 (Drosophila)) SCM1 antibody [N1N3]
Purification:	Purified by antigen-affinity chromatography.

## Target Details

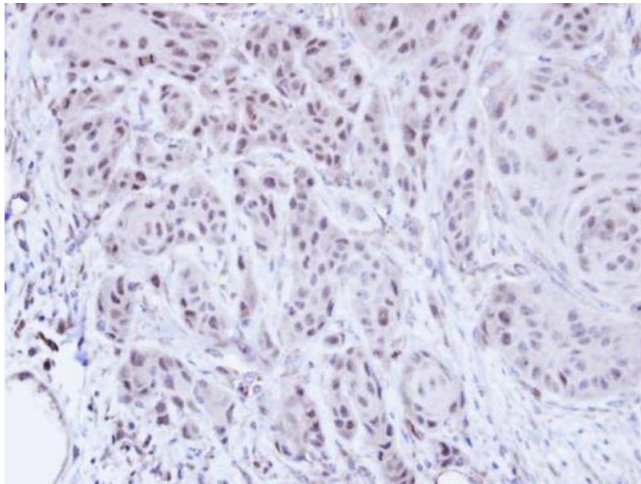
Target:	SCMH1
Alternative Name:	SCMH1 ( <a href="#">SCMH1 Products</a> )
Background:	<p>Component of the Polycomb group (PcG) multiprotein PRC1 complex, a complex required to maintain the transcriptionally repressive state of many genes, including Hox genes, throughout development. PcG PRC1 complex acts via chromatin remodeling and modification of histones, it mediates monoubiquitination of histone H2A 'Lys-119', rendering chromatin heritably changed in its expressibility.</p> <p>Cellular Localization: Nucleus</p>
Molecular Weight:	73 kDa
Gene ID:	22955

## Application Details

Application Notes:	<p>Suggested dilution Reference ICC/IF 1:100-1:1000* IHC (Formalin-fixed paraffin-embedded sections) 1:100-1:1000* Not tested in other applications. *Optimal dilutions/concentrations should be determined by the researcher.Suggested dilutionReferenceICC/IF1:100-1:1000* IHC (Formalin-fixed paraffin-embedded sections)1:100-1:1000*</p>
Comment:	Positive Control: 293T , H1299 , HepG2 , Raji
Restrictions:	For Research Use only

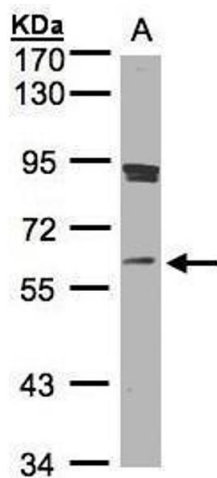
## Handling

Format:	Liquid
Concentration:	1 mg/mL
Buffer:	0.1M Tris, 0.1M Glycine, 10 % Glycerol ( pH 7). 0.01 % Thimerosal was added as a preservative.
Preservative:	Thimerosal (Merthiolate)
Precaution of Use:	This product contains Thimerosal (Merthiolate): a POISONOUS AND HAZARDOUS SUBSTANCE which should be handled by trained staff only.
Storage:	-20 °C
Storage Comment:	Keep as concentrated solution. Aliquot and store at -20°C or below. Avoid multiple freeze-thaw cycles.



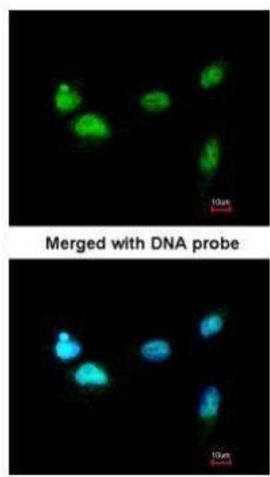
### Immunohistochemistry

**Image 1.** IHC-P Image Immunohistochemical analysis of paraffin-embedded Cal27 xenograft, using SCM1, antibody at 1:100 dilution.



### Western Blotting

**Image 2.** WB Image Sample(30 ug whole cell lysate) A:Raji , 7.5% SDS PAGE antibody diluted at 1:1000



### Immunofluorescence

**Image 3.** ICC/IF Image Immunofluorescence analysis of paraformaldehyde-fixed A549, using SCM1, antibody at 1:200 dilution.