

Datasheet for ABIN2856464

anti-PRP19 antibody**3** Images[Go to Product page](#)

Overview

Quantity:	100 µL
Target:	PRP19 (PRPF19)
Reactivity:	Human
Host:	Rabbit
Clonality:	Polyclonal
Conjugate:	This PRP19 antibody is un-conjugated
Application:	Western Blotting (WB), Immunohistochemistry (Paraffin-embedded Sections) (IHC (p)), Immunofluorescence (IF), Immunocytochemistry (ICC)

Product Details

Immunogen:	Recombinant protein encompassing a sequence within the center region of human PRP19. The exact sequence is proprietary.
Isotype:	IgG
Cross-Reactivity:	Human
Characteristics:	Rabbit Polyclonal antibody to PRP19 (PRP19/PSO4 pre-mRNA processing factor 19 homolog (S. cerevisiae)) PRP19 antibody [C1C3]
Purification:	Purified by antigen-affinity chromatography.

Target Details

Target:	PRP19 (PRPF19)
---------	----------------

Target Details

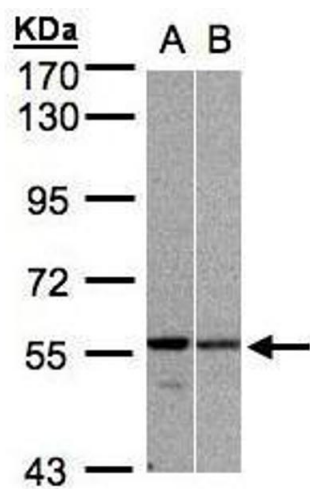
Alternative Name:	pre-mRNA processing factor 19 (PRPF19 Products)
Background:	PSO4 is the human homolog of yeast Pso4, a gene essential for cell survival and DNA repair (Beck et al., 2008 [PubMed 18263876]).[supplied by OMIM] Cellular Localization: Nucleus , nucleoplasm
Molecular Weight:	55 kDa
Gene ID:	27339
UniProt:	Q9UMS4
Pathways:	Ribonucleoprotein Complex Subunit Organization

Application Details

Application Notes:	WB: 1:500-1:3000. ICC/IF: 1:100-1:1000. IHC-P: 1:100-1:1000. Optimal dilutions/concentrations should be determined by the researcher. Not tested in other applications.
Comment:	Positive Control: H1299 , Molt-4
Restrictions:	For Research Use only

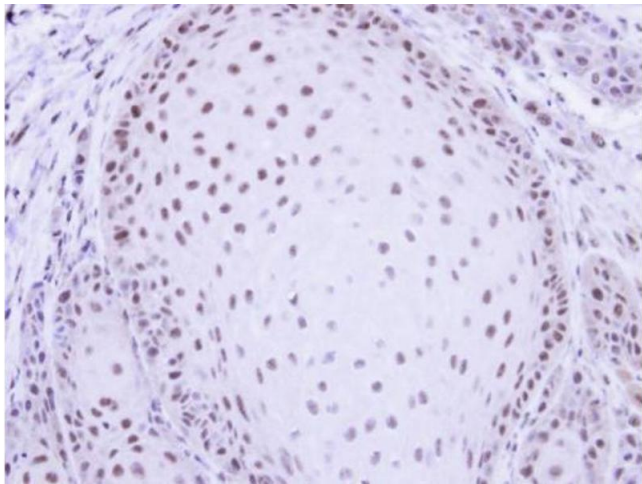
Handling

Format:	Liquid
Concentration:	1.04 mg/mL
Buffer:	0.1M Tris-Glycine (pH 7), 10 % Glycerol, 0.01 % Thimerosal
Preservative:	Thimerosal (Merthiolate)
Precaution of Use:	This product contains Thimerosal (Merthiolate): a POISONOUS AND HAZARDOUS SUBSTANCE which should be handled by trained staff only.
Storage:	4 °C, -20 °C
Storage Comment:	Store as concentrated solution. Centrifuge briefly prior to opening vial. For short-term storage (1-2 weeks), store at 4°C. For long-term storage, aliquot and store at -20°C or below. Avoid multiple freeze-thaw cycles.



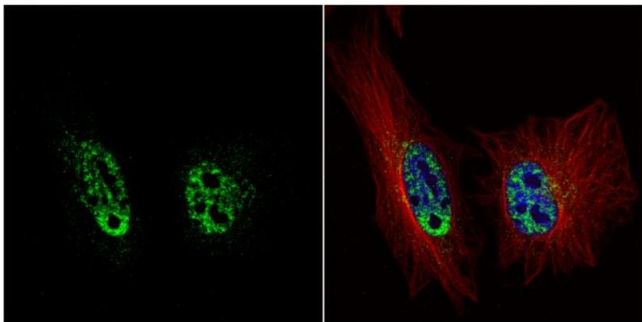
Western Blotting

Image 1. WB Image Sample (30µg whole cell lysate)
A:H1299 B:MOLT4 , 7.5% SDS PAGE antibody diluted at 1:3000



Immunohistochemistry

Image 2. IHC-P Image Immunohistochemical analysis of paraffin-embedded Cal27 xenograft, using PRP19, antibody at 1:500 dilution.



Immunofluorescence

Image 3. ICC/IF Image PRP19 antibody [C1C3] detects PRP19 protein at nucleus by immunofluorescent analysis. Sample: HeLa cells were fixed in 4% paraformaldehyde at RT for 15 min. Green: PRP19 protein stained by PRP19 antibody [C1C3] , diluted at 1:1000. Red: alpha Tubulin, a cytoskeleton marker, stained by alpha Tubulin antibody [B-5-1-2] , diluted at 1:10000. Blue: Hoechst 33342 staining.