

Datasheet for ABIN2856465

anti-GLYATL1 antibody**3** Images[Go to Product page](#)

Overview

Quantity:	100 µL
Target:	GLYATL1
Reactivity:	Human
Host:	Rabbit
Clonality:	Polyclonal
Conjugate:	This GLYATL1 antibody is un-conjugated
Application:	Western Blotting (WB), Immunohistochemistry (Paraffin-embedded Sections) (IHC (p)), Immunocytochemistry (ICC), Immunofluorescence (IF)

Product Details

Immunogen:	Recombinant protein encompassing a sequence within the center region of human GLYATL1. The exact sequence is proprietary.
Isotype:	IgG
Cross-Reactivity:	Human
Characteristics:	Rabbit Polyclonal antibody to GLYATL1 (glycine-N-acyltransferase-like 1) GLYATL1 antibody
Purification:	Purified by antigen-affinity chromatography.

Target Details

Target:	GLYATL1
Alternative Name:	glycine-N-acyltransferase like 1 (GLYATL1 Products)

Target Details

Background: Mitochondrial acyltransferase which transfers the acyl group to the N-terminus of glycine. Can conjugate a multitude of substrates to form a variety of N-acylglycines.

Cellular Localization: Mitochondrion

Molecular Weight: 35 kDa

Gene ID: 92292

UniProt: [Q969I3](#)

Application Details

Application Notes: WB: 1:500-1:3000. ICC/IF: 1:100-1:1000. IHC-P: 1:100-1:1000. Optimal dilutions/concentrations should be determined by the researcher. Not tested in other applications.

Comment: Positive Control: HepG2

Restrictions: For Research Use only

Handling

Format: Liquid

Concentration: 1 mg/mL

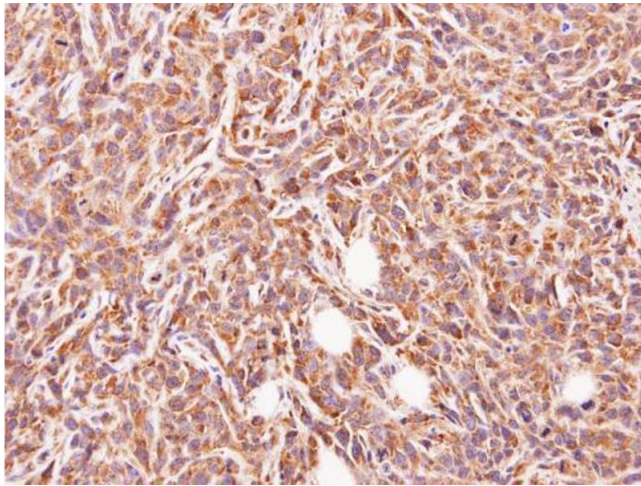
Buffer: 0.1M Tris-Glycine (pH 7), 10 % Glycerol, 0.01 % Thimerosal

Preservative: Thimerosal (Merthiolate)

Precaution of Use: This product contains Thimerosal (Merthiolate): a POISONOUS AND HAZARDOUS SUBSTANCE which should be handled by trained staff only.

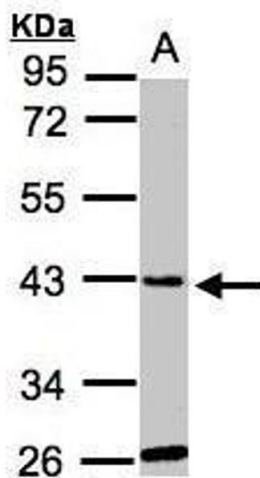
Storage: 4 °C, -20 °C

Storage Comment: Store as concentrated solution. Centrifuge briefly prior to opening vial. For short-term storage (1-2 weeks), store at 4°C. For long-term storage, aliquot and store at -20°C or below. Avoid multiple freeze-thaw cycles.



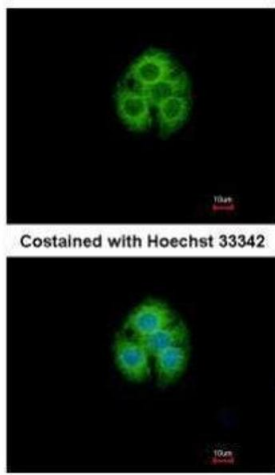
Immunohistochemistry

Image 1. IHC-P Image Immunohistochemical analysis of paraffin-embedded SAS xenograft, using GLYATL1, antibody at 1:500 dilution.



Western Blotting

Image 2. WB Image Sample(30 ug whole cell lysate) A:Hep G2 , 10% SDS PAGE antibody diluted at 1:1000



Immunofluorescence

Image 3. ICC/IF Image Immunofluorescence analysis of methanol-fixed Hep G2, using GLYATL1, antibody at 1:500 dilution.