

Datasheet for ABIN2856470  
**anti-SUCLG2 antibody**



[Go to Product page](#)

5 Images

## Overview

Quantity:	100 µL
Target:	SUCLG2
Reactivity:	Human
Host:	Rabbit
Clonality:	Polyclonal
Conjugate:	This SUCLG2 antibody is un-conjugated
Application:	Western Blotting (WB), Immunofluorescence (IF), Immunocytochemistry (ICC), Immunohistochemistry (Paraffin-embedded Sections) (IHC (p))

## Product Details

Immunogen:	Recombinant protein encompassing a sequence within the center region of human SUCLG2. The exact sequence is proprietary.
Isotype:	IgG
Cross-Reactivity:	Human, Mouse
Characteristics:	Rabbit Polyclonal antibody to SUCLG2 (succinate-CoA ligase, GDP-forming, beta subunit) SUCLG2 antibody
Purification:	Purified by antigen-affinity chromatography.
Grade:	KO Validated

## Target Details

Target:	SUCLG2
---------	--------

## Target Details

---

Alternative Name:	succinate-CoA ligase GDP-forming beta subunit ( <a href="#">SUCLG2 Products</a> )
Background:	This gene encodes a GTP-specific beta subunit of succinyl-CoA synthetase. Succinyl-CoA synthetase catalyzes the reversible reaction involving the formation of succinyl-CoA and succinate. Alternate splicing results in multiple transcript variants. Pseudogenes of this gene are found on chromosomes 5 and 12.  Cellular Localization: Mitochondrion
Molecular Weight:	47 kDa
Gene ID:	8801
UniProt:	<a href="#">Q96199</a>

## Application Details

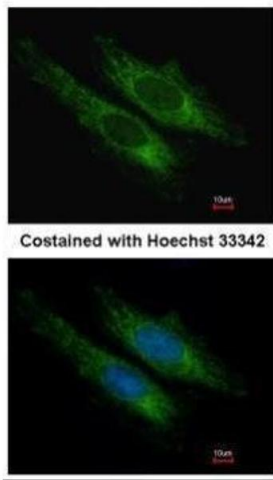
---

Application Notes:	WB: 1:1000-1:10000. ICC/IF: 1:100-1:1000. IHC-P: 1:100-1:1000. Optimal dilutions/concentrations should be determined by the researcher. Not tested in other applications.
Comment:	Positive Control: Mouse liver , 293T , A431 , H1299 , HeLaS3 , HepG2 , Molt-4 , Raji Validation: KO/KD
Restrictions:	For Research Use only

## Handling

---

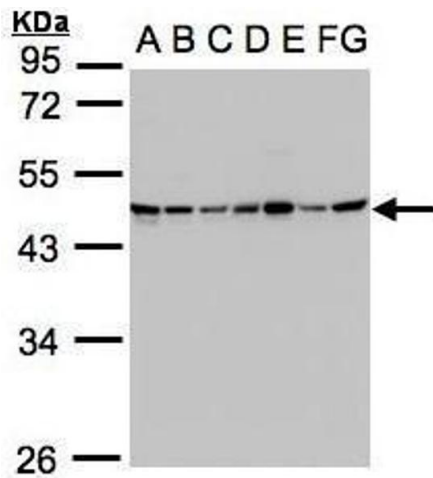
Format:	Liquid
Concentration:	0.94 mg/mL
Buffer:	0.1M Tris-Glycine ( pH 7), 10 % Glycerol, 0.01 % Thimerosal
Preservative:	Thimerosal (Merthiolate)
Precaution of Use:	This product contains Thimerosal (Merthiolate): a POISONOUS AND HAZARDOUS SUBSTANCE which should be handled by trained staff only.
Storage:	4 °C,-20 °C
Storage Comment:	Store as concentrated solution. Centrifuge briefly prior to opening vial. For short-term storage (1-2 weeks), store at 4°C. For long-term storage, aliquot and store at -20°C or below. Avoid multiple freeze-thaw cycles.



Costained with Hoechst 33342

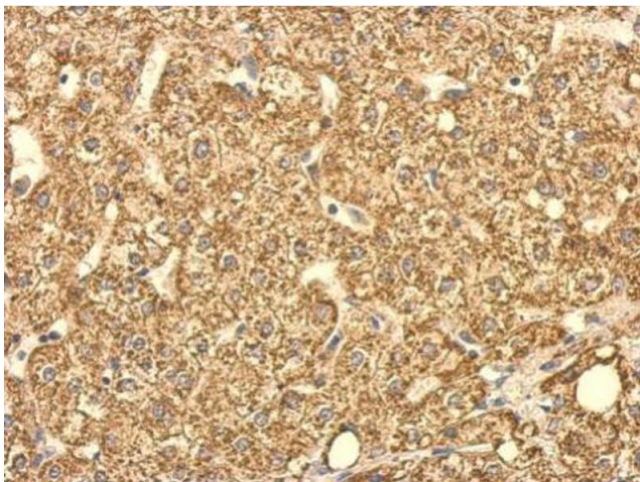
### Immunofluorescence

**Image 1.** ICC/IF Image Immunofluorescence analysis of methanol-fixed HeLa, using SUCLG2, antibody at 1:200 dilution.



### Western Blotting

**Image 2.** WB Image Sample(30µg whole cell lysate) A: 293T B: A431 , C: H1299 D: HeLa S3 , E: Hep G2 , F: MOLT4 , G: Raji , 10% SDS PAGE antibody diluted at 1:1000



### Immunohistochemistry

**Image 3.** IHC-P Image SUCLG2 antibody detects SUCLG2 protein at cytosol on human hepatoma by immunohistochemical analysis. Sample: Paraffin-embedded hepatoma. SUCLG2 antibody , dilution: 1:500.

Please check the [product details page](#) for more images. Overall 5 images are available for ABIN2856470.