

Datasheet for ABIN2856471

**anti-ZC3H8 antibody****3** Images[Go to Product page](#)

## Overview

Quantity:	100 µL
Target:	ZC3H8
Reactivity:	Human
Host:	Rabbit
Clonality:	Polyclonal
Conjugate:	This ZC3H8 antibody is un-conjugated
Application:	Western Blotting (WB), Immunohistochemistry (Paraffin-embedded Sections) (IHC (p)), Immunocytochemistry (ICC), Immunofluorescence (IF)

## Product Details

Immunogen:	Recombinant protein encompassing a sequence within the center region of human ZC3H8. The exact sequence is proprietary.
Isotype:	IgG
Cross-Reactivity:	Human
Characteristics:	Rabbit polyclonal antibody to ZC3H8 (zinc finger CCCH-type containing 8) ZC3H8 antibody [N1C3]
Purification:	Purified by antigen-affinity chromatography.

## Target Details

Target:	ZC3H8
Alternative Name:	zinc finger CCCH-type containing 8 ( <a href="#">ZC3H8 Products</a> )

## Target Details

**Background:** Acts as a transcriptional repressor of the GATA3 promoter. Sequence-specific DNA-binding factor that binds to the 5'-AGGTCTC-3' sequence within the negative cis-acting element intronic regulatory region (IRR) of the GATA3 gene (By similarity). Induces thymocyte apoptosis when overexpressed, which may indicate a role in regulation of thymocyte homeostasis.

Cellular Localization: Nucleus

**Molecular Weight:** 34 kDa

**Gene ID:** 84524

**UniProt:** [Q8N5P1](#)

## Application Details

**Application Notes:** WB: 1:500-1:3000. ICC/IF: 1:100-1:1000. IHC-P: 1:100-1:1000. Optimal dilutions/concentrations should be determined by the researcher. Not tested in other applications.

**Comment:** Positive Control: A431 , HepG2 , Raji

**Restrictions:** For Research Use only

## Handling

**Format:** Liquid

**Concentration:** 0.84 mg/mL

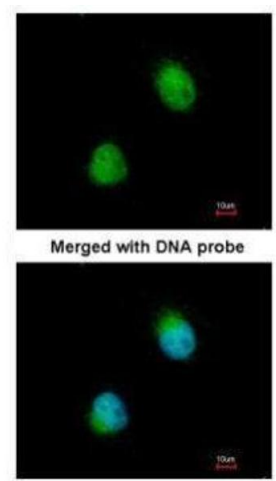
**Buffer:** 0.1M Tris-Glycine ( pH 7), 10 % Glycerol, 0.01 % Thimerosal

**Preservative:** Thimerosal (Merthiolate)

**Precaution of Use:** This product contains Thimerosal (Merthiolate): a POISONOUS AND HAZARDOUS SUBSTANCE which should be handled by trained staff only.

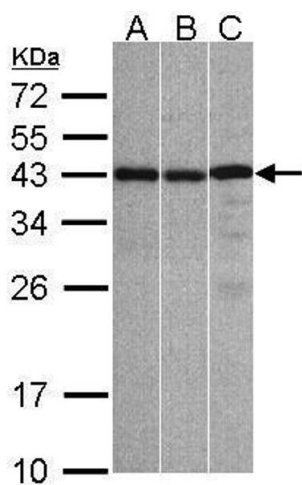
**Storage:** 4 °C,-20 °C

**Storage Comment:** Store as concentrated solution. Centrifuge briefly prior to opening vial. For short-term storage (1-2 weeks), store at 4°C. For long-term storage, aliquot and store at -20°C or below. Avoid multiple freeze-thaw cycles.



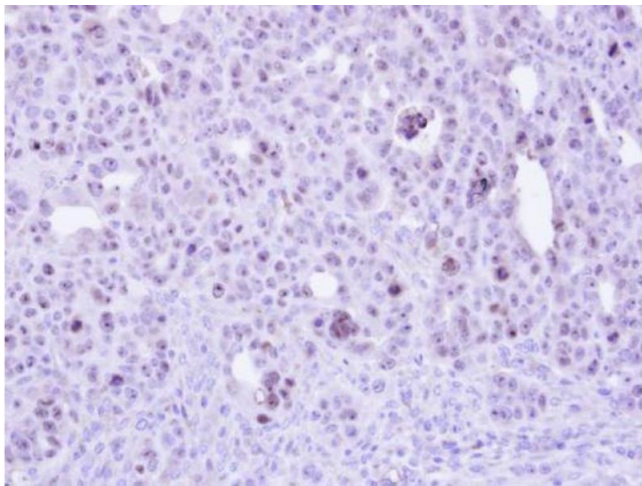
Immunofluorescence

**Image 1.** ICC/IF Image Immunofluorescence analysis of paraformaldehyde-fixed HeLa, using ZC3H8, antibody at 1:200 dilution.



Western Blotting

**Image 2.** WB Image Sample(30 ug whole cell lysate) A:A431, B:Hep G2 , C:Raji , 12% SDS PAGE antibody diluted at 1:1000



Immunohistochemistry

**Image 3.** IHC-P Image Immunohistochemical analysis of paraffin-embedded NCIN87 xenograft , using ZC3H8, antibody at 1:500 dilution.