



[Go to Product page](#)

Datasheet for ABIN2856472
anti-C18ORF25 antibody

2 Images

Overview

Quantity:	100 µL
Target:	C18ORF25
Reactivity:	Human
Host:	Rabbit
Clonality:	Polyclonal
Conjugate:	This C18ORF25 antibody is un-conjugated
Application:	Western Blotting (WB), Immunohistochemistry (Paraffin-embedded Sections) (IHC (p))

Product Details

Immunogen:	Recombinant protein encompassing a sequence within the center region of human C18orf25. The exact sequence is proprietary.
Isotype:	IgG
Cross-Reactivity:	Human
Characteristics:	Rabbit Polyclonal antibody to C18orf25 (uncharacterized protein C18orf25) C18orf25 antibody
Purification:	Purified by antigen-affinity chromatography.

Target Details

Target:	C18ORF25
Alternative Name:	chromosome 18 open reading frame 25 (C18ORF25 Products)

Target Details

Molecular Weight: 43 kDa

Gene ID: 147339

UniProt: [Q96B23](#)

Application Details

Application Notes: WB: 1:500-1:3000. IHC-P: 1:100-1:1000. Optimal dilutions/concentrations should be determined by the researcher. Not tested in other applications.

Comment: Positive Control: HeLa , HepG2

Restrictions: For Research Use only

Handling

Format: Liquid

Concentration: 1 mg/mL

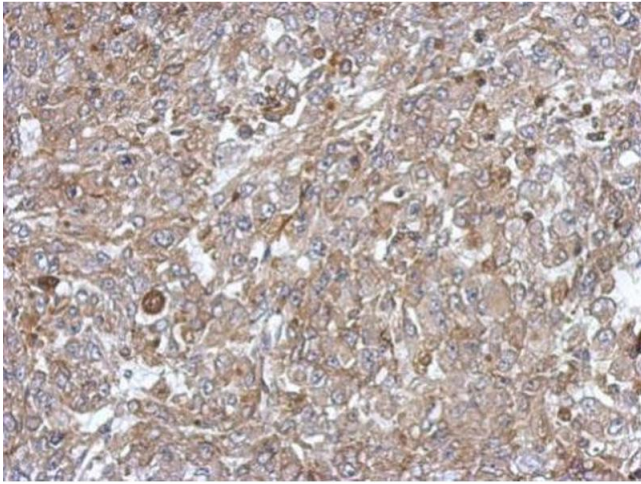
Buffer: 1XPBS (pH 7), 20 % Glycerol, 0.01 % Thimerosal

Preservative: Thimerosal (Merthiolate)

Precaution of Use: This product contains Thimerosal (Merthiolate): a POISONOUS AND HAZARDOUS SUBSTANCE which should be handled by trained staff only.

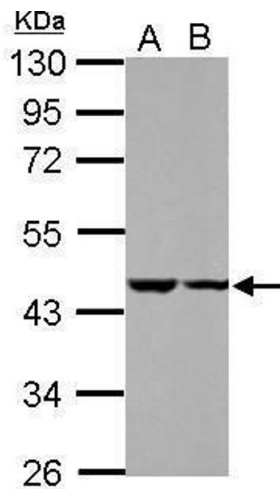
Storage: 4 °C,-20 °C

Storage Comment: Store as concentrated solution. Centrifuge briefly prior to opening vial. For short-term storage (1-2 weeks), store at 4°C. For long-term storage, aliquot and store at -20°C or below. Avoid multiple freeze-thaw cycles.



Immunohistochemistry

Image 1. IHC-P Image Immunohistochemical analysis of paraffin-embedded HeLa xenograft, using C18orf25, antibody at 1:500 dilution.



Western Blotting

Image 2. WB Image Sample (30 ug of whole cell lysate) A: HeLa B: HepG2 10% SDS PAGE antibody diluted at 1:1000