

Datasheet for ABIN2856473

**anti-FHL5 antibody****3** Images[Go to Product page](#)

## Overview

Quantity:	100 µL
Target:	FHL5
Reactivity:	Human
Host:	Rabbit
Clonality:	Polyclonal
Application:	Western Blotting (WB), Immunofluorescence (IF), Immunocytochemistry (ICC), Immunohistochemistry (Paraffin-embedded Sections) (IHC (p))

## Product Details

Immunogen:	Recombinant protein encompassing a sequence within the center region of human FHL5. The exact sequence is proprietary.
Isotype:	IgG
Cross-Reactivity:	Human
Characteristics:	Rabbit Polyclonal antibody to FHL5 (four and a half LIM domains 5) FHL5 antibody [N1C2]
Purification:	Purified by antigen-affinity chromatography.

## Target Details

Target:	FHL5
Alternative Name:	four and a half LIM domains 5 ( <a href="#">FHL5 Products</a> )
Background:	The protein encoded by this gene is coordinately expressed with activator of cAMP-responsive

## Target Details

element modulator (CREM). It is associated with CREM and confers a powerful transcriptional activation function. CREM acts as a transcription factor essential for the differentiation of spermatids into mature spermatozoa. There are multiple polyadenylation sites found in this gene.

Cellular Localization: Nucleus

Molecular Weight: 33 kDa

Gene ID: 9457

UniProt: [Q5TD97](#)

## Application Details

Application Notes: WB: 1:500-1:3000. ICC/IF: 1:100-1:1000. IHC-P: 1:100-1:1000. Optimal dilutions/concentrations should be determined by the researcher. Not tested in other applications.

Comment: Positive Control: 293T , Raji

Restrictions: For Research Use only

## Handling

Format: Liquid

Concentration: 1 mg/mL

Buffer: 0.1M Tris-Glycine ( pH 7), 10 % Glycerol, 0.01 % Thimerosal

Preservative: Thimerosal (Merthiolate)

Precaution of Use: This product contains Thimerosal (Merthiolate): a POISONOUS AND HAZARDOUS SUBSTANCE which should be handled by trained staff only.

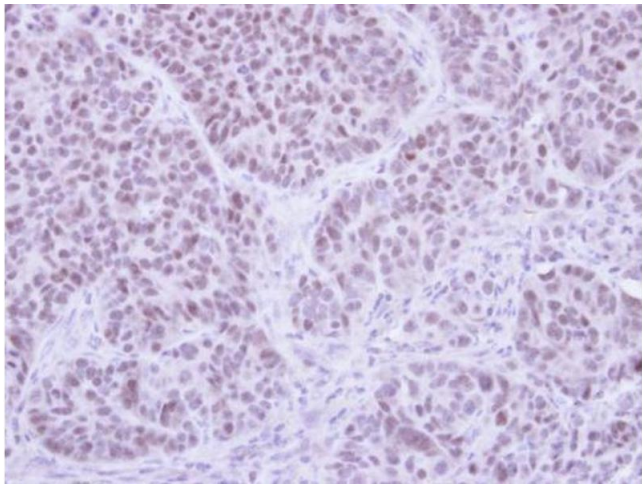
Storage: 4 °C,-20 °C

Storage Comment: Store as concentrated solution. Centrifuge briefly prior to opening vial. For short-term storage (1-2 weeks), store at 4°C. For long-term storage, aliquot and store at -20°C or below. Avoid multiple freeze-thaw cycles.



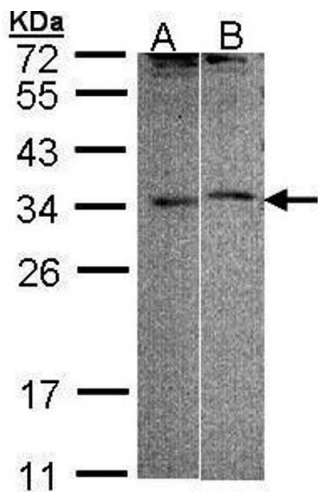
### Immunofluorescence

**Image 1.** ICC/IF Image Immunofluorescence analysis of paraformaldehyde-fixed HeLa, using FHL5, antibody at 1:500 dilution.



### Immunohistochemistry

**Image 2.** IHC-P Image Immunohistochemical analysis of paraffin-embedded SW480 xenograft, using FHL5, antibody at 1:500 dilution.



### Western Blotting

**Image 3.** WB Image Sample (30 ug of whole cell lysate) A: 293T B: Raji 12 % SDS PAGE antibody diluted at 1:1000