

Datasheet for ABIN2856480  
**anti-Phosducin-Like antibody**[Go to Product page](#)

## 4 Images

## Overview

Quantity:	100 µL
Target:	Phosducin-Like (PDCL)
Reactivity:	Human
Host:	Rabbit
Clonality:	Polyclonal
Conjugate:	This Phosducin-Like antibody is un-conjugated
Application:	Western Blotting (WB), Immunohistochemistry (Paraffin-embedded Sections) (IHC (p)), Immunocytochemistry (ICC), Immunofluorescence (IF)

## Product Details

Immunogen:	Recombinant protein encompassing a sequence within the center region of human PHLP. The exact sequence is proprietary.
Isotype:	IgG
Cross-Reactivity:	Human, Mouse
Characteristics:	Rabbit Polyclonal antibody to PHLP (phosducin-like) PHLP antibody
Purification:	Purified by antigen-affinity chromatography.

## Target Details

Target:	Phosducin-Like (PDCL)
Alternative Name:	phosducin like ( <a href="#">PDCL Products</a> )

## Target Details

**Background:** Phosducin-like protein is a putative modulator of heterotrimeric G proteins. The protein shares extensive amino acid sequence homology with phosducin, a phosphoprotein expressed in retina and pineal gland. Both phosducin-like protein and phosphoducin have been shown to regulate G-protein signaling by binding to the beta-gamma subunits of G proteins.

**Molecular Weight:** 34 kDa

**Gene ID:** 5082

**UniProt:** [Q13371](#)

## Application Details

**Application Notes:** WB: 1:500-1:3000. ICC/IF: 1:100-1:1000. IHC-P: 1:100-1:1000. Optimal dilutions/concentrations should be determined by the researcher. Not tested in other applications.

**Comment:** Positive Control: H1299

**Restrictions:** For Research Use only

## Handling

**Format:** Liquid

**Concentration:** 1 mg/mL

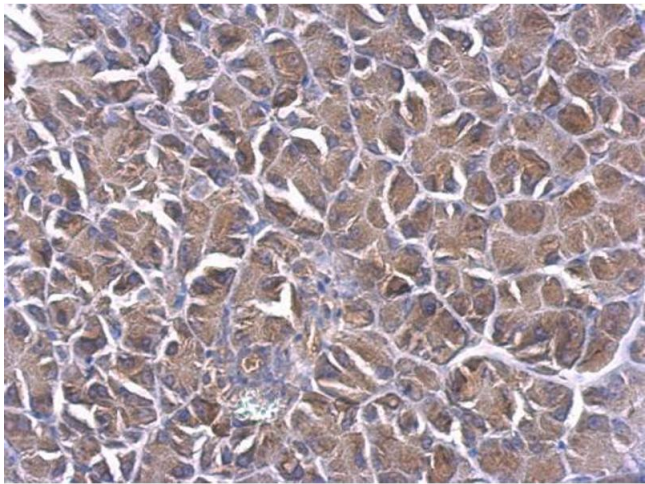
**Buffer:** 0.1M Tris-Glycine ( pH 7), 10 % Glycerol, 0.01 % Thimerosal

**Preservative:** Thimerosal (Merthiolate)

**Precaution of Use:** This product contains Thimerosal (Merthiolate): a POISONOUS AND HAZARDOUS SUBSTANCE which should be handled by trained staff only.

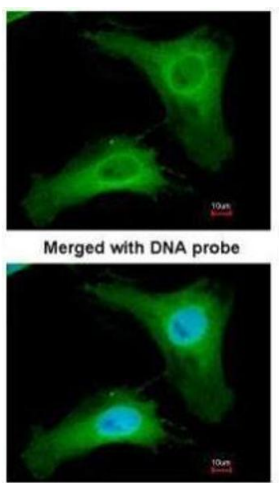
**Storage:** 4 °C,-20 °C

**Storage Comment:** Store as concentrated solution. Centrifuge briefly prior to opening vial. For short-term storage (1-2 weeks), store at 4°C. For long-term storage, aliquot and store at -20°C or below. Avoid multiple freeze-thaw cycles.



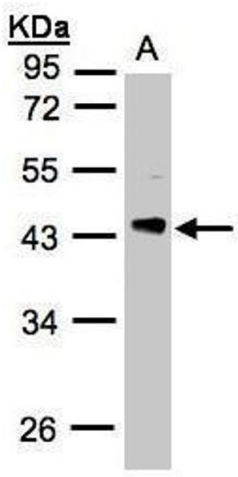
### Immunohistochemistry

**Image 1.** IHC-P Image PHLP antibody detects PHLP protein at cytoplasm on mouse pancreas by immunohistochemical analysis. Sample: Paraffin-embedded mouse pancreas. PHLP antibody , dilution: 1:500.



### Immunofluorescence

**Image 2.** ICC/IF Image Immunofluorescence analysis of paraformaldehyde-fixed HeLa, using PHLP, antibody at 1:200 dilution.



### Western Blotting

**Image 3.** WB Image Sample(30 ug whole cell lysate) A:H1299 10% SDS PAGE antibody diluted at 1:3000

Please check the [product details page](#) for more images. Overall 4 images are available for ABIN2856480.