

Datasheet for ABIN2856482

anti-C11orf54 antibody**2** Images[Go to Product page](#)

Overview

Quantity:	100 µL
Target:	C11orf54
Reactivity:	Human
Host:	Rabbit
Clonality:	Polyclonal
Conjugate:	This C11orf54 antibody is un-conjugated
Application:	Western Blotting (WB), Immunofluorescence (IF), Immunocytochemistry (ICC)

Product Details

Immunogen:	Recombinant protein encompassing a sequence within the center region of human C11orf54. The exact sequence is proprietary.
Isotype:	IgG
Cross-Reactivity:	Human
Characteristics:	Rabbit Polyclonal antibody to C11orf54 (chromosome 11 open reading frame 54) C11orf54 antibody
Purification:	Purified by antigen-affinity chromatography.

Target Details

Target:	C11orf54
Alternative Name:	chromosome 11 open reading frame 54 (C11orf54 Products)

Target Details

Background: Exhibits ester hydrolase activity on the substrate p-nitrophenyl acetate.

Cellular Localization: Nucleus

Molecular Weight: 35 kDa

Gene ID: 28970

UniProt: [Q9H0W9](#)

Application Details

Application Notes: WB: 1:500-1:3000. ICC/IF: 1:100-1:2000. Optimal dilutions/concentrations should be determined by the researcher. Not tested in other applications.

Comment: Positive Control: A549 , H1299 , HCT116

Restrictions: For Research Use only

Handling

Format: Liquid

Concentration: 1 mg/mL

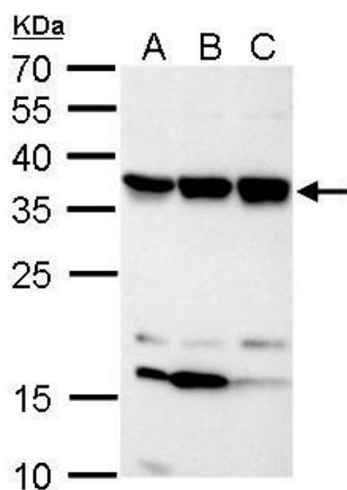
Buffer: 1XPBS (pH 7), 20 % Glycerol, 0.01 % Thimerosal

Preservative: Thimerosal (Merthiolate)

Precaution of Use: This product contains Thimerosal (Merthiolate): a POISONOUS AND HAZARDOUS SUBSTANCE which should be handled by trained staff only.

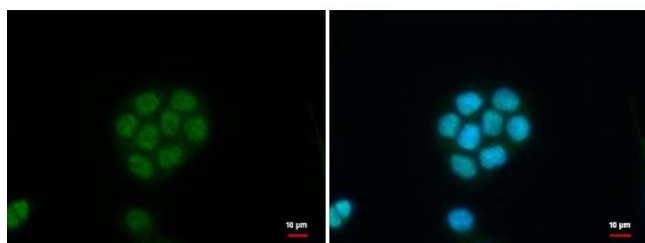
Storage: 4 °C,-20 °C

Storage Comment: Store as concentrated solution. Centrifuge briefly prior to opening vial. For short-term storage (1-2 weeks), store at 4°C. For long-term storage, aliquot and store at -20°C or below. Avoid multiple freeze-thaw cycles.



Western Blotting

Image 1. WB Image C11orf54 antibody detects C11orf54 protein by Western blot analysis. A. 30 µg A549 whole cell lysate/extract B. 30 µg H1299 whole cell lysate/extract C. 30 µg HCT116 whole cell lysate/extract 12 % SDS-PAGE C11orf54 antibody , dilution: 1:1000



Immunofluorescence

Image 2. ICC/IF Image C11orf54 antibody detects C11orf54 protein at nucleus by immunofluorescent analysis. Sample: HCT116 cells were fixed in 4% paraformaldehyde/PBS for 15 min. Green: C11orf54 protein stained by C11orf54 antibody , diluted at 1:2000. Blue: Hoechst 33342 staining.