

Datasheet for ABIN2856483  
**anti-RCC2 antibody**

3 Images



[Go to Product page](#)

### Overview

|              |  |
|--------------|--|
| Quantity:    | 100 µL   |
| Target:      | RCC2   |
| Reactivity:  | Human  |
| Host:        | Rabbit   |
| Clonality:   | Polyclonal   |
| Conjugate:   | This RCC2 antibody is un-conjugated  |
| Application: | Western Blotting (WB), Immunoprecipitation (IP), Immunohistochemistry (Paraffin-embedded Sections) (IHC (p)) |

### Product Details

|                   |  |
|-------------------|--|
| Immunogen:        | Recombinant protein encompassing a sequence within the center region of human RCC2. The exact sequence is proprietary. |
| Isotype:          | IgG  |
| Cross-Reactivity: | Human, Mouse   |
| Characteristics:  | Rabbit Polyclonal antibody to RCC2 (regulator of chromosome condensation 2)<br>RCC2 antibody [N3C3]                    |
| Purification:     | Purified by antigen-affinity chromatography.   |

### Target Details

|                   |  |
|-------------------|--|
| Target:           | RCC2   |
| Alternative Name: | regulator of chromosome condensation 2 ( <a href="#">RCC2 Products</a> ) |

## Target Details

---

Background: Required for completion of mitosis and cytokinesis. May function as a guanine nucleotide exchange factor for the small GTPase RAC1.

Cellular Localization: Nucleus , nucleolus , Centromere , Spindle

---

Molecular Weight: 56 kDa

---

Gene ID: 55920

---

UniProt: [Q9P258](#)

---

## Application Details

---

Application Notes: WB: 1:500-1:3000. IHC-P: 1:100-1:1000. Optimal dilutions/concentrations should be determined by the researcher. Not tested in other applications.

---

Comment: Positive Control: Mouse brain , H1299 , Molt-4

---

Restrictions: For Research Use only

---

## Handling

---

Format: Liquid

---

Concentration: 1 mg/mL

---

Buffer: 0.1M Tris-Glycine ( pH 7), 10 % Glycerol, 0.01 % Thimerosal

---

Preservative: Thimerosal (Merthiolate)

---

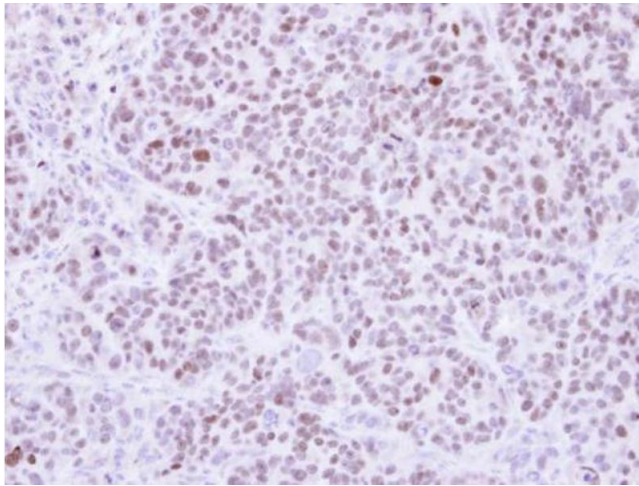
Precaution of Use: This product contains Thimerosal (Merthiolate): a POISONOUS AND HAZARDOUS SUBSTANCE which should be handled by trained staff only.

---

Storage: 4 °C, -20 °C

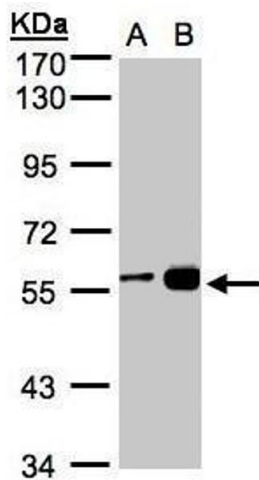
---

Storage Comment: Store as concentrated solution. Centrifuge briefly prior to opening vial. For short-term storage (1-2 weeks), store at 4°C. For long-term storage, aliquot and store at -20°C or below. Avoid multiple freeze-thaw cycles.



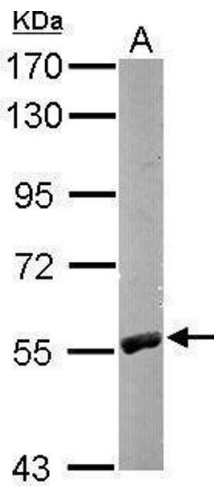
### Immunohistochemistry

**Image 1.** IHC-P Image Immunohistochemical analysis of paraffin-embedded SW480 xenograft, using RCC2, antibody at 1:500 dilution.



### Western Blotting

**Image 2.** WB Image Sample(30 ug whole cell lysate) A:H1299 B:MOLT4 , 7.5% SDS PAGE antibody diluted at 1:1000



### Western Blotting

**Image 3.** WB Image Sample (50 ug of whole cell lysate) A: Mouse brain 7.5% SDS PAGE antibody diluted at 1:1000