

Datasheet for ABIN2856484  
**anti-WRNIP1 antibody (C-Term)**[Go to Product page](#)

## 1 Image

## Overview

Quantity:	100 µL
Target:	WRNIP1
Binding Specificity:	C-Term
Reactivity:	Human
Host:	Rabbit
Clonality:	Polyclonal
Conjugate:	This WRNIP1 antibody is un-conjugated
Application:	Western Blotting (WB)

## Product Details

Immunogen:	Recombinant protein encompassing a sequence within the C-terminus region of human WHIP. The exact sequence is proprietary.
Isotype:	IgG
Cross-Reactivity:	Human
Characteristics:	Rabbit Polyclonal antibody to WHIP (Werner helicase interacting protein 1) WHIP antibody [C1C3]
Purification:	Purified by antigen-affinity chromatography.

## Target Details

Target:	WRNIP1
---------	--------

## Target Details

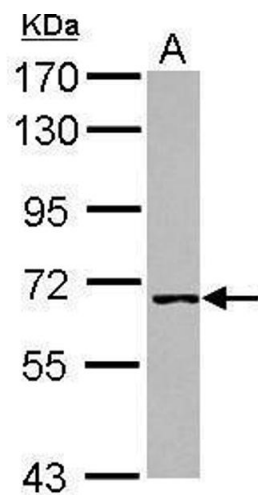
Alternative Name:	Werner helicase interacting protein 1 ( <a href="#">WRNIP1 Products</a> )
Background:	<p>Werner's syndrome is a rare autosomal recessive disorder characterized by premature aging. The protein encoded by this gene interacts with the N-terminal portion of Werner protein containing the exonuclease domain. This protein shows homology to replication factor C family proteins, and is conserved from E. coli to human. Studies in yeast suggest that this gene may influence the aging process. Two transcript variants encoding different isoforms have been isolated for this gene.</p> <p>Cellular Localization: Nucleus (By similarity)</p>
Molecular Weight:	72 kDa
Gene ID:	56897
UniProt:	<a href="#">Q96S55</a>

## Application Details

Application Notes:	WB: 1:500-1:3000. Optimal dilutions/concentrations should be determined by the researcher. Not tested in other applications.
Comment:	Positive Control: A431
Restrictions:	For Research Use only

## Handling

Format:	Liquid
Concentration:	0.69 mg/mL
Buffer:	0.1M Tris-Glycine ( pH 7), 20 % Glycerol, 0.01 % Thimerosal
Preservative:	Thimerosal (Merthiolate)
Precaution of Use:	This product contains Thimerosal (Merthiolate): a POISONOUS AND HAZARDOUS SUBSTANCE which should be handled by trained staff only.
Storage:	4 °C,-20 °C
Storage Comment:	Store as concentrated solution. Centrifuge briefly prior to opening vial. For short-term storage (1-2 weeks), store at 4°C. For long-term storage, aliquot and store at -20°C or below. Avoid multiple freeze-thaw cycles.



Western Blotting

**Image 1.** WB Image Sample (30 ug of whole cell lysate) A:  
A431 7.5% SDS PAGE antibody diluted at 1:1000