



Datasheet for ABIN2856487
anti-APEX1 antibody (Center)



[Go to Product page](#)

3 Images

Overview

Quantity:	100 µL
Target:	APEX1
Binding Specificity:	Center
Reactivity:	Human, Mouse
Host:	Rabbit
Clonality:	Polyclonal
Conjugate:	This APEX1 antibody is un-conjugated
Application:	Western Blotting (WB), Immunohistochemistry (Paraffin-embedded Sections) (IHC (p))

Product Details

Immunogen:	Recombinant protein encompassing a sequence within the center region of human APE1. The exact sequence is proprietary.
Isotype:	IgG
Cross-Reactivity:	Chimpanzee
Cross-Reactivity (Details):	Chimpanzee (100 %)
Characteristics:	Rabbit Polyclonal antibody to APE1 (DNA-(apurinic or apyrimidinic site) lyase) APE1 antibody
Purification:	Purified by antigen-affinity chromatography.

Target Details

Target:	APEX1
Alternative Name:	APE1 (APEX1 Products)
Background:	<p>Apurinic/apyrimidinic (AP) sites occur frequently in DNA molecules by spontaneous hydrolysis, by DNA damaging agents or by DNA glycosylases that remove specific abnormal bases. AP sites are pre-mutagenic lesions that can prevent normal DNA replication so the cell contains systems to identify and repair such sites. Class II AP endonucleases cleave the phosphodiester backbone 5' to the AP site. This gene encodes the major AP endonuclease in human cells. Splice variants have been found for this gene, all encode the same protein.</p> <p>Cellular Localization: Nucleus</p>
Molecular Weight:	36 kDa
Gene ID:	328
Pathways:	DNA Damage Repair , Chromatin Binding , Cell RedoxHomeostasis , Smooth Muscle Cell Migration , Positive Regulation of Response to DNA Damage Stimulus

Application Details

Application Notes:	<p>Suggested dilution Reference IHC (Formalin-fixed paraffin-embedded sections) 1:100-1:1000* Western blot 1:500-1:3000* Not tested in other applications. *Optimal dilutions/concentrations should be determined by the researcher.Suggested dilutionReferenceIHC (Formalin-fixed paraffin-embedded sections)1:100-1:1000* Western blot1:500-1:3000*</p>
Comment:	Positive Control: A431 , mouse brain
Restrictions:	For Research Use only

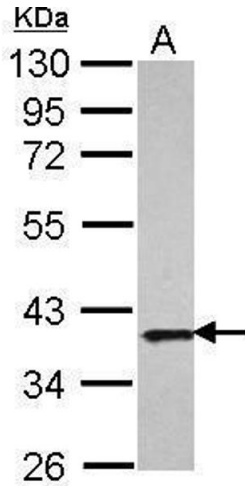
Handling

Format:	Liquid
Concentration:	1 mg/mL
Buffer:	1XPBS, 1 % BSA, 20 % Glycerol (pH 7). 0.01 % Thimerosal was added as a preservative.
Preservative:	Thimerosal (Merthiolate)
Precaution of Use:	This product contains Thimerosal (Merthiolate): a POISONOUS AND HAZARDOUS SUBSTANCE which should be handled by trained staff only.
Storage:	-20 °C

Handling

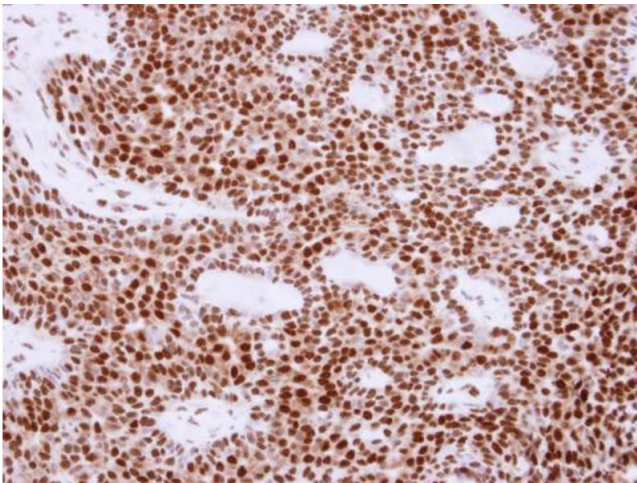
Storage Comment: Keep as concentrated solution. Aliquot and store at -20°C or below. Avoid multiple freeze-thaw cycles.

Images



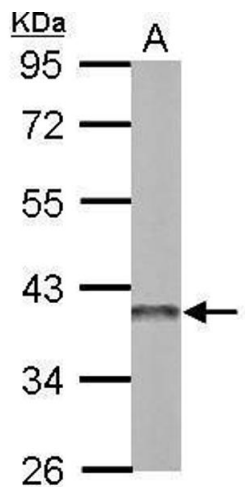
Western Blotting

Image 1. WB Image Sample (30 ug of whole cell lysate) A: A431 10% SDS PAGE antibody diluted at 1:1000



Immunohistochemistry

Image 2. IHC-P Image Immunohistochemical analysis of paraffin-embedded human lung cancer, using APE1, antibody at 1:250 dilution.



Western Blotting

Image 3. WB Image Sample (50 ug of whole cell lysate) A: mouse brain 10% SDS PAGE antibody diluted at 1:3000