

Datasheet for ABIN2856488

anti-ASB5 antibody**2** Images[Go to Product page](#)

Overview

Quantity:	100 µL
Target:	ASB5
Reactivity:	Human
Host:	Rabbit
Clonality:	Polyclonal
Conjugate:	This ASB5 antibody is un-conjugated
Application:	Western Blotting (WB), Immunocytochemistry (ICC), Immunofluorescence (IF)

Product Details

Immunogen:	Recombinant protein encompassing a sequence within the center region of human ASB5. The exact sequence is proprietary.
Isotype:	IgG
Cross-Reactivity:	Human, Mouse
Characteristics:	Rabbit Polyclonal antibody to ASB5 (ankyrin repeat and SOCS box-containing 5) ASB5 antibody [N1C3]
Purification:	Purified by antigen-affinity chromatography.

Target Details

Target:	ASB5
Alternative Name:	ankyrin repeat and SOCS box containing 5 (ASB5 Products)

Target Details

Background: The protein encoded by this gene is a member of the ankyrin repeat and SOCS box-containing (ASB) family of proteins. They contain ankyrin repeat sequence and SOCS box domain. The SOCS box serves to couple suppressor of cytokine signalling (SOCS) proteins and their binding partners with the elongin B and C complex, possibly targeting them for degradation. Multiple alternatively spliced transcript variants have been described for this gene but their full length sequences are not known.

Molecular Weight: 36 kDa

Gene ID: 140458

UniProt: [Q8WWX0](#)

Application Details

Application Notes: WB: 1:500-1:3000. ICC/IF: 1:100-1:1000. Optimal dilutions/concentrations should be determined by the researcher. Not tested in other applications.

Comment: Positive Control: A431 , HeLaS3 , HepG2 , mouse muscle

Restrictions: For Research Use only

Handling

Format: Liquid

Concentration: 0.5 mg/mL

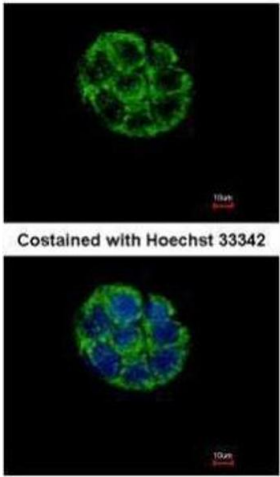
Buffer: 0.1M Tris-Glycine (pH 7), 10 % Glycerol, 0.01 % Thimerosal

Preservative: Thimerosal (Merthiolate)

Precaution of Use: This product contains Thimerosal (Merthiolate): a POISONOUS AND HAZARDOUS SUBSTANCE which should be handled by trained staff only.

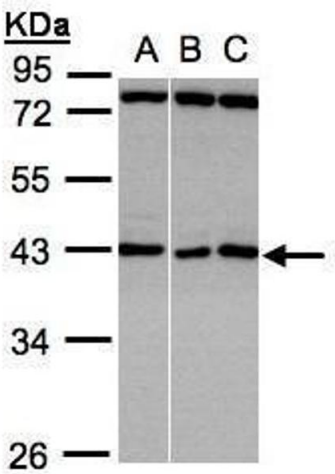
Storage: 4 °C, -20 °C

Storage Comment: Store as concentrated solution. Centrifuge briefly prior to opening vial. For short-term storage (1-2 weeks), store at 4°C. For long-term storage, aliquot and store at -20°C or below. Avoid multiple freeze-thaw cycles.



Immunofluorescence

Image 1. ICC/IF Image Immunofluorescence analysis of methanol-fixed Hep G2, using ASB5, antibody at 1:500 dilution.



Western Blotting

Image 2. WB Image Sample(30 ug whole cell lysate) A:A431, B:HeLa S3, C:Hep G2 , 10% SDS PAGE antibody diluted at 1:1000