

Datasheet for ABIN2856489
anti-Doublecortin antibody[Go to Product page](#)

2 Images

Overview

Quantity:	100 µL
Target:	Doublecortin (DCX)
Reactivity:	Human
Host:	Rabbit
Clonality:	Polyclonal
Conjugate:	This Doublecortin antibody is un-conjugated
Application:	Western Blotting (WB), Immunofluorescence (IF), Immunocytochemistry (ICC)

Product Details

Immunogen:	Recombinant protein encompassing a sequence within the center region of human Doublecortin. The exact sequence is proprietary.
Isotype:	IgG
Cross-Reactivity:	Human
Characteristics:	Rabbit polyclonal antibody to Doublecortin (doublecortex, lissencephaly, X-linked (doublecortin)) Doublecortin antibody [N3C3]
Purification:	Purified by antigen-affinity chromatography.

Target Details

Target:	Doublecortin (DCX)
Alternative Name:	doublecortin (DCX Products)

Target Details

Background: In the developing cortex, cortical neurons must migrate over long distances to reach the site of their final differentiation. The protein encoded by this gene is a cytoplasmic protein which appears to direct neuronal migration by regulating the organization and stability of microtubules. The encoded protein contains two doublecortin domains, which bind microtubules. In addition, the encoded protein interacts with LIS1, the regulatory gamma subunit of platelet activating factor acetylhydrolase, and this interaction is important to proper microtubule function in the developing cortex. Mutations in this gene are a cause of X-linked lissencephaly. Multiple transcript variants encoding at least three different isoforms have been found for this gene.

Cellular Localization: Cytoplasm

Molecular Weight: 49 kDa

Gene ID: 1641

UniProt: [O43602](#)

Application Details

Application Notes: WB: 1:500-1:3000. ICC/IF: 1:50-1:200. Optimal dilutions/concentrations should be determined by the researcher. Not tested in other applications.

Comment: Positive Control: human DCX-transfected 293T

Restrictions: For Research Use only

Handling

Format: Liquid

Concentration: 0.76 mg/mL

Buffer: 0.1M Tris-Glycine (pH 7), 10 % Glycerol, 0.01 % Thimerosal

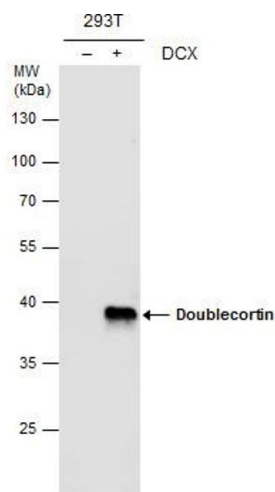
Preservative: Thimerosal (Merthiolate)

Precaution of Use: This product contains Thimerosal (Merthiolate): a POISONOUS AND HAZARDOUS SUBSTANCE which should be handled by trained staff only.

Storage: 4 °C,-20 °C

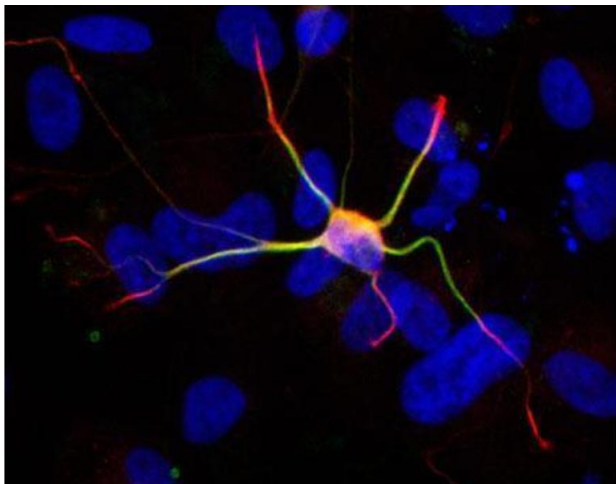
Storage Comment: Store as concentrated solution. Centrifuge briefly prior to opening vial. For short-term storage (1-2 weeks), store at 4°C. For long-term storage, aliquot and store at -20°C or below. Avoid

multiple freeze-thaw cycles.



Western Blotting

Image 1. WB Image Doublecortin antibody detects Doublecortin protein by western blot analysis. Non-transfected (-) and Doublecortin-transfected (+) 293T whole cell extracts (30 µg) were separated by 10% SDS-PAGE, and the membrane was blotted with Doublecortin antibody , at a dilution of 1:1000.



Immunofluorescence

Image 2. ICC/IF Image Immunofluorescent staining of neurons derived from human ESC with a 1:200 dilution of GeneTex anti-doublecortin antibody, Anti-doublecortin antibody (red) colocalizes with anti-MAP2 antibody (green). Image courtesy of Jente Lu, UC Irvine.