

Datasheet for ABIN2856490
anti-NSMCE1 antibody (Center)[Go to Product page](#)

2 Images

Overview

Quantity:	100 µL
Target:	NSMCE1
Binding Specificity:	Center
Reactivity:	Human
Host:	Rabbit
Clonality:	Polyclonal
Conjugate:	This NSMCE1 antibody is un-conjugated
Application:	Western Blotting (WB), Immunohistochemistry (Paraffin-embedded Sections) (IHC (p))

Product Details

Immunogen:	Recombinant protein encompassing a sequence within the center region of human NSMCE1. The exact sequence is proprietary.
Isotype:	IgG
Cross-Reactivity:	Mouse (Murine), Rat (Rattus), Cow (Bovine)
Cross-Reactivity (Details):	Mouse (90 %), Rat (92 %), Bovine (90 %)
Characteristics:	Rabbit polyclonal antibody to NSMCE1 (non-SMC element 1 homolog (S. cerevisiae)) NSMCE1 antibody [N1C3]
Purification:	Purified by antigen-affinity chromatography.

Target Details

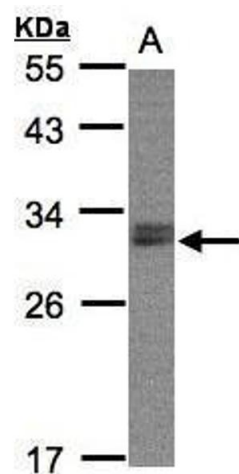
Target:	NSMCE1
Alternative Name:	NSMCE1 (NSMCE1 Products)
Background:	Probable component of the SMC5-SMC6 complex, a complex involved in DNA double-strand breaks by homologous recombination. The complex may promote sister chromatid homologous recombination by recruiting the SMC1-SMC3 cohesin complex to double-strand breaks. Cellular Localization: Nucleus
Molecular Weight:	31 kDa
Gene ID:	197370
Pathways:	Positive Regulation of Response to DNA Damage Stimulus

Application Details

Application Notes:	Suggested dilution Reference IHC (Formalin-fixed paraffin-embedded sections) 1:100-1:1000* Western blot 1:500-1:3000* Not tested in other applications. *Optimal dilutions/concentrations should be determined by the researcher.Suggested dilutionReferenceIHC (Formalin-fixed paraffin-embedded sections)1:100-1:1000* Western blot1:500-1:3000*
Comment:	Positive Control: 293T , Raji
Restrictions:	For Research Use only

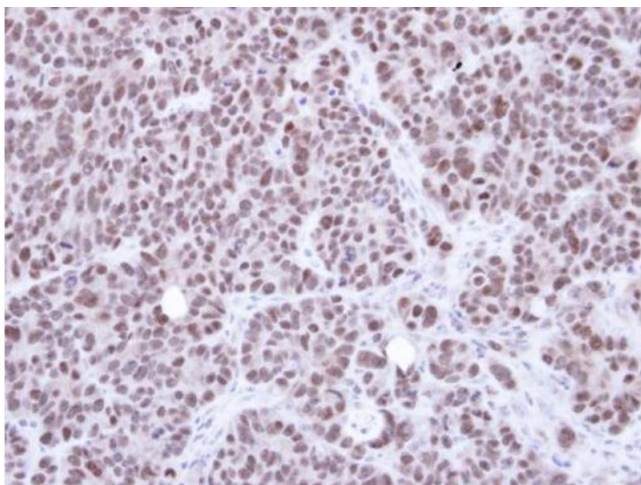
Handling

Format:	Liquid
Concentration:	1 mg/mL
Buffer:	0.1M Tris, 0.1M Glycine, 10 % Glycerol (pH 7). 0.01 % Thimerosal was added as a preservative.
Preservative:	Thimerosal (Merthiolate)
Precaution of Use:	This product contains Thimerosal (Merthiolate): a POISONOUS AND HAZARDOUS SUBSTANCE which should be handled by trained staff only.
Storage:	-20 °C
Storage Comment:	Keep as concentrated solution. Aliquot and store at -20°C or below. Avoid multiple freeze-thaw cycles.



Western Blotting

Image 1. WB Image Sample(30 ug whole cell lysate) A:Raji , 12% SDS PAGE antibody diluted at 1:2000



Immunohistochemistry

Image 2. IHC-P Image Immunohistochemical analysis of paraffin-embedded SW480 xenograft, using NSMCE1, antibody at 1:500 dilution.