

Datasheet for ABIN2856491

anti-BPGM antibody**3** Images[Go to Product page](#)

Overview

Quantity:	100 µL
Target:	BPGM
Reactivity:	Human
Host:	Rabbit
Clonality:	Polyclonal
Conjugate:	This BPGM antibody is un-conjugated
Application:	Western Blotting (WB), Immunofluorescence (IF), Immunocytochemistry (ICC)

Product Details

Immunogen:	Recombinant protein encompassing a sequence within the center region of human BPGM. The exact sequence is proprietary.
Isotype:	IgG
Cross-Reactivity:	Human, Mouse
Characteristics:	Rabbit Polyclonal antibody to BPGM (2,3-bisphosphoglycerate mutase) BPGM antibody [N1C3]
Purification:	Purified by antigen-affinity chromatography.

Target Details

Target:	BPGM
Alternative Name:	bisphosphoglycerate mutase (BPGM Products)

Target Details

Background: 2,3-diphosphoglycerate (2,3-DPG) is a small molecule found at high concentrations in red blood cells where it binds to and decreases the oxygen affinity of hemoglobin. This gene encodes a multifunctional enzyme that catalyzes 2,3-DPG synthesis via its synthetase activity, and 2,3-DPG degradation via its phosphatase activity. The enzyme also has phosphoglycerate phosphomutase activity. Deficiency of this enzyme increases the affinity of cells for oxygen. Mutations in this gene result in hemolytic anemia. Multiple alternatively spliced variants, encoding the same protein, have been identified.

Molecular Weight: 30 kDa

Gene ID: 669

UniProt: [P07738](#)

Application Details

Application Notes: WB: 1:500-1:3000. ICC/IF: 1:100-1:1000. Optimal dilutions/concentrations should be determined by the researcher. Not tested in other applications.

Comment: Positive Control: Mouse spleen , 293T , A431 , H1299

Restrictions: For Research Use only

Handling

Format: Liquid

Concentration: 0.84 mg/mL

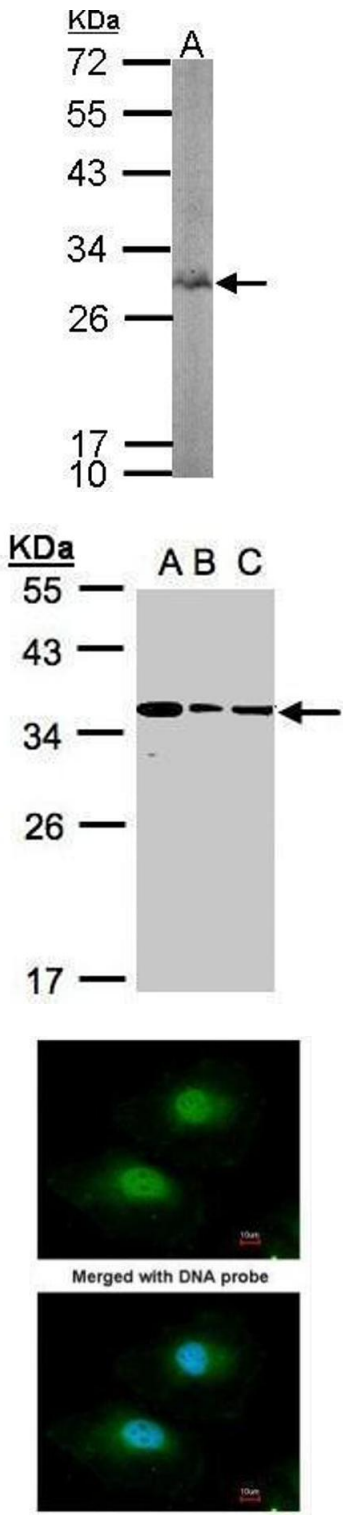
Buffer: 0.1M Tris-Glycine (pH 7), 10 % Glycerol, 0.01 % Thimerosal

Preservative: Thimerosal (Merthiolate)

Precaution of Use: This product contains Thimerosal (Merthiolate): a POISONOUS AND HAZARDOUS SUBSTANCE which should be handled by trained staff only.

Storage: 4 °C,-20 °C

Storage Comment: Store as concentrated solution. Centrifuge briefly prior to opening vial. For short-term storage (1-2 weeks), store at 4°C. For long-term storage, aliquot and store at -20°C or below. Avoid multiple freeze-thaw cycles.



Western Blotting

Image 1. WB Image Sample (50 ug of whole cell lysate) A: mouse spleen 12% SDS PAGE antibody diluted at 1:1000

Western Blotting

Image 2. WB Image Sample(30 ug whole cell lysate) A:293T B:A431, C:H1299 12% SDS PAGE antibody diluted at 1:1000

Immunofluorescence

Image 3. ICC/IF Image Immunofluorescence analysis of paraformaldehyde-fixed HeLa, using BPGM, antibody at 1:100 dilution.