



[Go to Product page](#)

Datasheet for ABIN2856492

anti-CCDC170 antibody (C-Term)

5 Images

Overview

Quantity:	100 µL
Target:	CCDC170
Binding Specificity:	C-Term
Reactivity:	Human
Host:	Rabbit
Clonality:	Polyclonal
Conjugate:	This CCDC170 antibody is un-conjugated
Application:	Western Blotting (WB), Immunohistochemistry (Paraffin-embedded Sections) (IHC (p)), Immunocytochemistry (ICC), Immunofluorescence (IF)

Product Details

Immunogen:	Recombinant protein encompassing a sequence within the C-terminus region of human C6orf97. The exact sequence is proprietary.
Isotype:	IgG
Cross-Reactivity:	Human
Characteristics:	Rabbit Polyclonal antibody to C6orf97 (chromosome 6 open reading frame 97) C6orf97 antibody
Purification:	Purified by antigen-affinity chromatography.

Target Details

Target:	CCDC170
---------	---------

Target Details

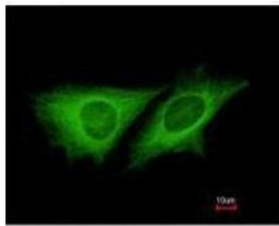
Alternative Name:	coiled-coil domain containing 170 (CCDC170 Products)
Background:	The function of this gene and its encoded protein is not known. Several genome-wide association studies have implicated the region around this gene to be involved in breast cancer and bone mineral density, but no link to this specific gene has been found.
Molecular Weight:	82 kDa
Gene ID:	80129
UniProt:	Q8IYT3

Application Details

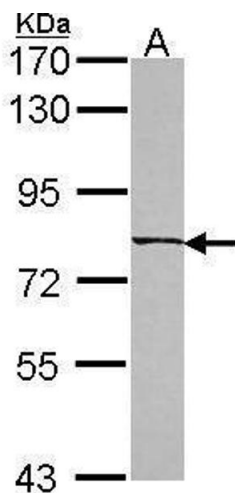
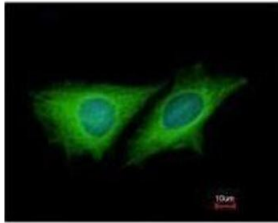
Application Notes:	WB: 1:500-1:3000. ICC/IF: 1:100-1:1000. IHC-P: 1:100-1:1000. Optimal dilutions/concentrations should be determined by the researcher. Not tested in other applications.
Comment:	Positive Control: A549
Restrictions:	For Research Use only

Handling

Format:	Liquid
Concentration:	1 mg/mL
Buffer:	0.1M Tris-Glycine (pH 7), 10 % Glycerol, 0.01 % Thimerosal
Preservative:	Thimerosal (Merthiolate)
Precaution of Use:	This product contains Thimerosal (Merthiolate): a POISONOUS AND HAZARDOUS SUBSTANCE which should be handled by trained staff only.
Storage:	4 °C,-20 °C
Storage Comment:	Store as concentrated solution. Centrifuge briefly prior to opening vial. For short-term storage (1-2 weeks), store at 4°C. For long-term storage, aliquot and store at -20°C or below. Avoid multiple freeze-thaw cycles.



Costained with Hoechst 33342

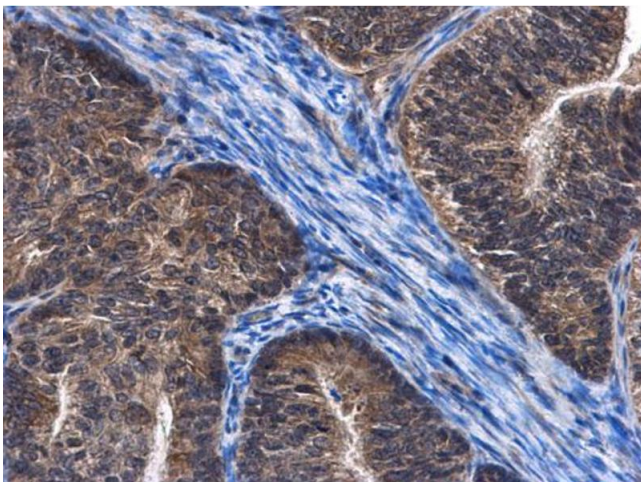


Immunofluorescence

Image 1. ICC/IF Image Immunofluorescence analysis of methanol-fixed HeLa, using LOC80129, antibody at 1:200 dilution.

Western Blotting

Image 2. WB Image Sample (30 ug of whole cell lysate) A: A549 7.5% SDS PAGE antibody diluted at 1:1000



Immunohistochemistry

Image 3. IHC-P Image C6orf97 antibody detects C6orf97 protein at cytoplasm in human endometrial cancer by immunohistochemical analysis. Sample: Paraffin-embedded human endometrial cancer. C6orf97 antibody, diluted at 1:500.

Please check the [product details page](#) for more images. Overall 5 images are available for ABIN2856492.