

Datasheet for ABIN2856494
anti-NSUN6 antibody (Center)[Go to Product page](#)

2 Images

Overview

Quantity:	100 µL
Target:	NSUN6
Binding Specificity:	Center
Reactivity:	Human
Host:	Rabbit
Clonality:	Polyclonal
Conjugate:	This NSUN6 antibody is un-conjugated
Application:	Western Blotting (WB), Immunofluorescence (IF), Immunocytochemistry (ICC)

Product Details

Immunogen:	Recombinant protein encompassing a sequence within the center region of human NSUN6. The exact sequence is proprietary.
Isotype:	IgG
Cross-Reactivity:	Mouse (Murine), Rat (Rattus), Cow (Bovine)
Cross-Reactivity (Details):	Mouse (82 %), Rat (81 %), Bovine (90 %)
Characteristics:	Rabbit polyclonal antibody to NSUN6 (NOL1/NOP2/Sun domain family, member 6) NSUN6 antibody [N3C3]
Purification:	Purified by antigen-affinity chromatography.

Target Details

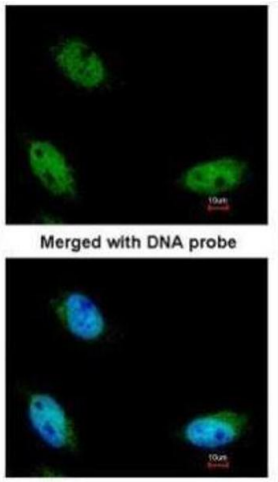
Target:	NSUN6
Alternative Name:	NSUN6 (NSUN6 Products)
Background:	May have S-adenosyl-L-methionine-dependent methyl-transferase activity.
Molecular Weight:	52 kDa
Gene ID:	221078

Application Details

Application Notes:	Suggested dilution Reference ICC/IF 1:100-1:1000* Western blot 1:500-1:3000* Not tested in other applications. *Optimal dilutions/concentrations should be determined by the researcher.Suggested dilutionReferenceICC/IF1:100-1:1000* Western blot1:500-1:3000*
Comment:	Positive Control: 293T , HeLaS3 , HepG2 , Molt-4
Restrictions:	For Research Use only

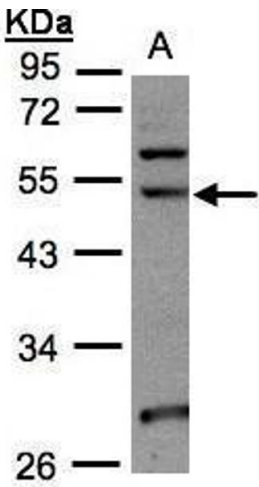
Handling

Format:	Liquid
Concentration:	0.84 mg/mL
Buffer:	0.1M Tris, 0.1M Glycine, 10 % Glycerol (pH 7). 0.01 % Thimerosal was added as a preservative.
Preservative:	Thimerosal (Merthiolate)
Precaution of Use:	This product contains Thimerosal (Merthiolate): a POISONOUS AND HAZARDOUS SUBSTANCE which should be handled by trained staff only.
Storage:	-20 °C
Storage Comment:	Keep as concentrated solution. Aliquot and store at -20°C or below. Avoid multiple freeze-thaw cycles.



Immunofluorescence

Image 1. ICC/IF Image Immunofluorescence analysis of paraformaldehyde-fixed HeLa, using NSUN6, antibody at 1:200 dilution.



Western Blotting

Image 2. WB Image Sample(30 ug whole cell lysate) A:293T 10% SDS PAGE antibody diluted at 1:1000