



Datasheet for ABIN2856496
anti-TUBB1 antibody



[Go to Product page](#)

3 Images

Overview

Quantity:	100 µL
Target:	TUBB1
Reactivity:	Human
Host:	Rabbit
Clonality:	Polyclonal
Conjugate:	This TUBB1 antibody is un-conjugated
Application:	Western Blotting (WB), Immunofluorescence (IF), Immunocytochemistry (ICC), Immunoprecipitation (IP), Immunohistochemistry (Paraffin-embedded Sections) (IHC (p)), Immunohistochemistry (Frozen Sections) (IHC (fro))

Product Details

Immunogen:	Recombinant protein encompassing a sequence within the center region of human beta Tubulin. The exact sequence is proprietary.
Isotype:	IgG
Cross-Reactivity:	Human, Mouse, Zebrafish (Danio rerio)
Characteristics:	Rabbit Polyclonal antibody to beta Tubulin (tubulin, beta 1) beta Tubulin antibody
Purification:	Purified by antigen-affinity chromatography.

Target Details

Target:	TUBB1
---------	-------

Target Details

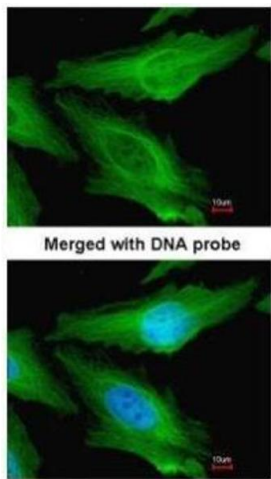
Alternative Name:	tubulin beta 1 class VI (TUBB1 Products)
Background:	Microtubules are involved in a wide variety of cellular processes, including mitosis, morphogenesis, platelet formation, and mobility of cilia and flagella. Circulating platelets carry a single marginal microtubule coil that is wound in 8 to 12 turns and is responsible for platelet shape. TUBB1 is the major beta-tubulin expressed in platelets and megakaryocytes and is required for optimal platelet assembly (Wang et al., 1986 [PubMed 3782288], Schulze et al., 2004 [PubMed 15315966]).[supplied by OMIM]
Molecular Weight:	50 kDa
Gene ID:	81027
UniProt:	Q9H4B7
Pathways:	Microtubule Dynamics

Application Details

Application Notes:	WB: 1:500-1:3000. ICC/IF: 1:100-1:1000. Optimal dilutions/concentrations should be determined by the researcher. Not tested in other applications.
Comment:	Positive Control: A431 , HepG2 , NIH-3T3
Restrictions:	For Research Use only

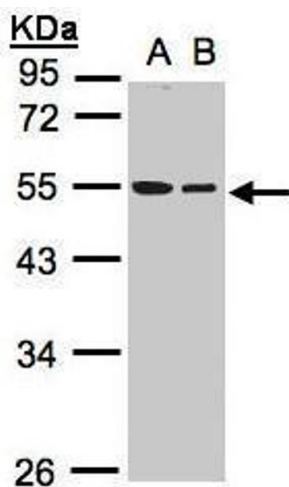
Handling

Format:	Liquid
Concentration:	1 mg/mL
Buffer:	0.1M Tris-Glycine (pH 7), 10 % Glycerol, 0.01 % Thimerosal
Preservative:	Thimerosal (Merthiolate)
Precaution of Use:	This product contains Thimerosal (Merthiolate): a POISONOUS AND HAZARDOUS SUBSTANCE which should be handled by trained staff only.
Storage:	4 °C,-20 °C
Storage Comment:	Store as concentrated solution. Centrifuge briefly prior to opening vial. For short-term storage (1-2 weeks), store at 4°C. For long-term storage, aliquot and store at -20°C or below. Avoid multiple freeze-thaw cycles.



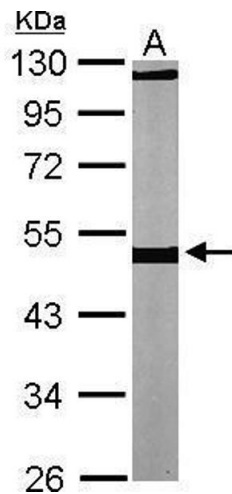
Immunofluorescence

Image 1. ICC/IF Image Immunofluorescence analysis of paraformaldehyde-fixed HeLa, using TUBB1, antibody at 1:200 dilution.



Western Blotting

Image 2. WB Image Sample(30 ug whole cell lysate) A:A431, B:Hep G2 , 10% SDS PAGE antibody diluted at 1:1000



Western Blotting

Image 3. WB Image Sample (30 ug of whole cell lysate) A: NIH-3T3 10% SDS PAGE antibody diluted at 1:1000