

Datasheet for ABIN2856499

anti-BEND5 antibody**2** Images[Go to Product page](#)

Overview

Quantity:	100 µL
Target:	BEND5
Reactivity:	Human
Host:	Rabbit
Clonality:	Polyclonal
Conjugate:	This BEND5 antibody is un-conjugated
Application:	Western Blotting (WB), Immunocytochemistry (ICC), Immunofluorescence (IF)

Product Details

Immunogen:	Recombinant protein encompassing a sequence within the center region of human C1orf165. The exact sequence is proprietary.
Isotype:	IgG
Cross-Reactivity:	Human
Characteristics:	Rabbit polyclonal antibody to C1orf165 (chromosome 1 open reading frame 165) C1orf165 antibody [N1C1]
Purification:	Purified by antigen-affinity chromatography.

Target Details

Target:	BEND5
Alternative Name:	BEN domain containing 5 (BEND5 Products)

Target Details

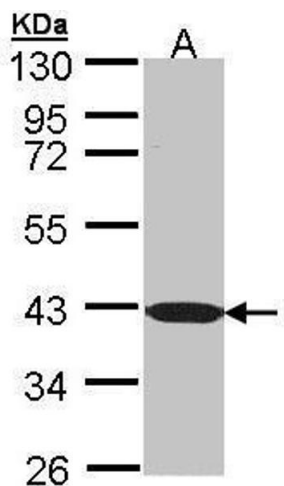
Molecular Weight:	48 kDa
Gene ID:	79656
UniProt:	Q7L4P6

Application Details

Application Notes:	WB: 1:500-1:3000. ICC/IF: 1:100-1:1000. Optimal dilutions/concentrations should be determined by the researcher. Not tested in other applications.
Comment:	Positive Control: Molt-4
Restrictions:	For Research Use only

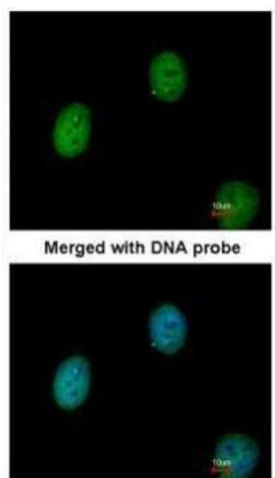
Handling

Format:	Liquid
Concentration:	1 mg/mL
Buffer:	0.1M Tris-Glycine (pH 7), 10 % Glycerol, 0.01 % Thimerosal
Preservative:	Thimerosal (Merthiolate)
Precaution of Use:	This product contains Thimerosal (Merthiolate): a POISONOUS AND HAZARDOUS SUBSTANCE which should be handled by trained staff only.
Storage:	4 °C,-20 °C
Storage Comment:	Store as concentrated solution. Centrifuge briefly prior to opening vial. For short-term storage (1-2 weeks), store at 4°C. For long-term storage, aliquot and store at -20°C or below. Avoid multiple freeze-thaw cycles.



Western Blotting

Image 1. WB Image Sample (30 ug of whole cell lysate) A: Molt-4 , 10 % SDS PAGE antibody diluted at 1:1000



Immunofluorescence

Image 2. ICC/IF Image Immunofluorescence analysis of paraformaldehyde-fixed HeLa, using C1orf165, antibody at 1:200 dilution.