

Datasheet for ABIN2856502
anti-RASSF2 antibody (Center)[Go to Product page](#)

3 Images

Overview

Quantity:	100 µL
Target:	RASSF2
Binding Specificity:	Center
Reactivity:	Human, Mouse
Host:	Rabbit
Clonality:	Polyclonal
Conjugate:	This RASSF2 antibody is un-conjugated
Application:	Western Blotting (WB), Immunocytochemistry (ICC), Immunofluorescence (IF)

Product Details

Immunogen:	Recombinant protein encompassing a sequence within the center region of human RASSF2. The exact sequence is proprietary.
Isotype:	IgG
Cross-Reactivity:	Chicken, Rat (Rattus)
Cross-Reactivity (Details):	Chicken (82 %), Rat (94 %)
Characteristics:	Rabbit Polyclonal antibody to RASSF2 (Ras association (RalGDS/AF-6) domain family member 2) RASSF2 antibody [N1C3]
Purification:	Purified by antigen-affinity chromatography.

Target Details

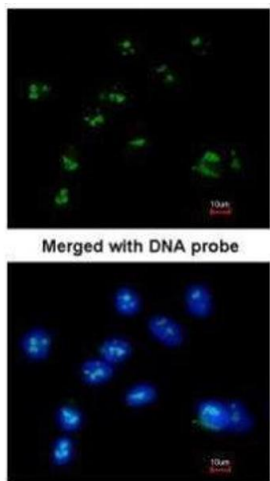
Target:	RASSF2
Alternative Name:	RASSF2 (RASSF2 Products)
Background:	<p>This gene encodes a protein that contains a Ras association domain. Similar to its cattle and sheep counterparts, this gene is located near the prion gene. Two alternatively spliced transcripts encoding the same isoform have been reported.</p> <p>Cellular Localization: Nucleus</p>
Molecular Weight:	38 kDa
Gene ID:	9770

Application Details

Application Notes:	<p>Suggested dilution Reference ICC/IF 1:100-1:1000* Western blot 1:500-1:3000* Not tested in other applications. *Optimal dilutions/concentrations should be determined by the researcher.Suggested dilutionReferenceICC/IF1:100-1:1000* Western blot1:500-1:3000*</p>
Comment:	Positive Control: H1299 , Raji , mouse brain
Restrictions:	For Research Use only

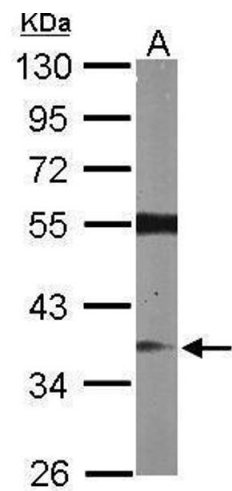
Handling

Format:	Liquid
Concentration:	0.81 mg/mL
Buffer:	0.1M Tris, 0.1M Glycine, 10 % Glycerol (pH 7). 0.01 % Thimerosal was added as a preservative.
Preservative:	Thimerosal (Merthiolate)
Precaution of Use:	This product contains Thimerosal (Merthiolate): a POISONOUS AND HAZARDOUS SUBSTANCE which should be handled by trained staff only.
Storage:	-20 °C
Storage Comment:	Keep as concentrated solution. Aliquot and store at -20°C or below. Avoid multiple freeze-thaw cycles.



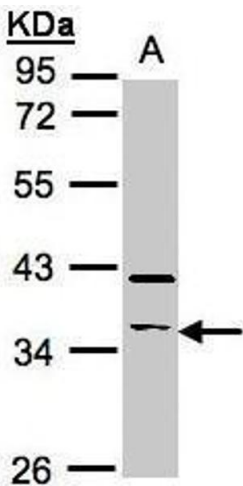
Immunofluorescence

Image 1. ICC/IF Image Immunofluorescence analysis of paraformaldehyde-fixed A549, using RASSF2, antibody at 1:200 dilution.



Western Blotting

Image 2. WB Image Sample (50 ug of whole cell lysate) A: Mouse brain 10% SDS PAGE antibody diluted at 1:1000



Western Blotting

Image 3. WB Image Sample(30 ug whole cell lysate) A:Raji , 10% SDS PAGE antibody diluted at 1:500