

Datasheet for ABIN2856504

**anti-TBRG4 antibody**

## 3 Images

[Go to Product page](#)

## Overview

Quantity:	100 µL
Target:	TBRG4
Reactivity:	Human
Host:	Rabbit
Clonality:	Polyclonal
Conjugate:	This TBRG4 antibody is un-conjugated
Application:	Western Blotting (WB), Immunofluorescence (IF), Immunoprecipitation (IP), Immunohistochemistry (Paraffin-embedded Sections) (IHC (p)), Immunocytochemistry (ICC)

## Product Details

Immunogen:	Recombinant protein encompassing a sequence within the center region of human TBRG4. The exact sequence is proprietary.
Isotype:	IgG
Cross-Reactivity:	Human
Characteristics:	Rabbit Polyclonal antibody to TBRG4 (transforming growth factor beta regulator 4) TBRG4 antibody
Purification:	Purified by antigen-affinity chromatography.

## Target Details

Target:	TBRG4
Alternative Name:	transforming growth factor beta regulator 4 ( <a href="#">TBRG4 Products</a> )

## Target Details

---

Background: May play a role in cell cycle progression.

Molecular Weight: 71 kDa

Gene ID: 9238

UniProt: [Q969Z0](#)

## Application Details

---

Application Notes: WB: 1:500-1:3000. ICC/IF: 1:100-1:1000. IHC-P: 1:100-1:1000. Optimal dilutions/concentrations should be determined by the researcher. Not tested in other applications.

Comment: Positive Control: A431 , HepG2

Restrictions: For Research Use only

## Handling

---

Format: Liquid

Concentration: 1 mg/mL

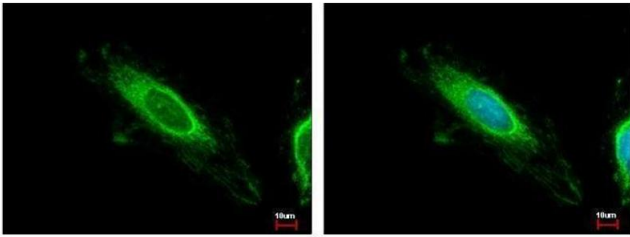
Buffer: 0.1M Tris-Glycine ( pH 7), 10 % Glycerol, 0.01 % Thimerosal

Preservative: Thimerosal (Merthiolate)

Precaution of Use: This product contains Thimerosal (Merthiolate): a POISONOUS AND HAZARDOUS SUBSTANCE which should be handled by trained staff only.

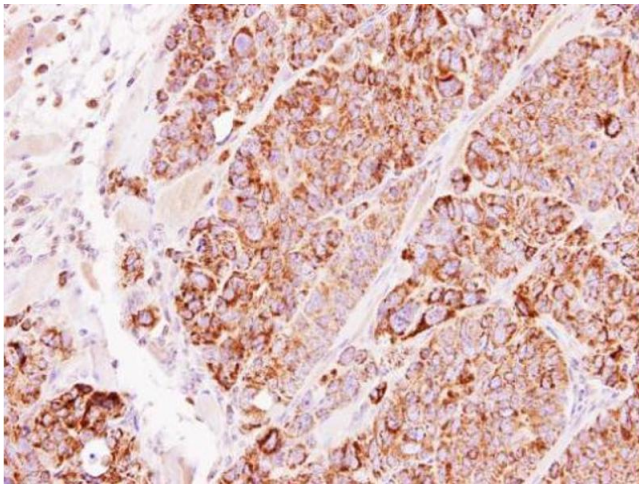
Storage: 4 °C,-20 °C

Storage Comment: Store as concentrated solution. Centrifuge briefly prior to opening vial. For short-term storage (1-2 weeks), store at 4°C. For long-term storage, aliquot and store at -20°C or below. Avoid multiple freeze-thaw cycles.



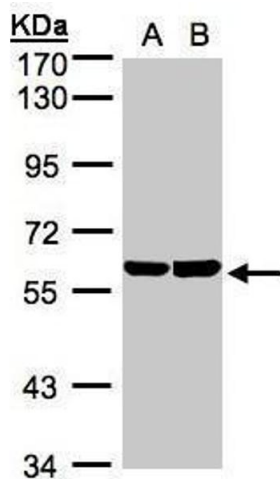
### Immunofluorescence

**Image 1.** ICC/IF Image TBRG4 antibody detects TBRG4 protein at mitochondria by immunofluorescent analysis. Sample: HeLa cells were fixed in ice-cold MeOH for 5 min. Green: TBRG4 protein stained by TBRG4 antibody , diluted at 1:500. Blue: Hoechst 33343 staining.



### Immunohistochemistry

**Image 2.** IHC-P Image Immunohistochemical analysis of paraffin-embedded SW480 xenograft, using TBRG4, antibody at 1:500 dilution.



### Western Blotting

**Image 3.** WB Image Sample(30 ug whole cell lysate) A:A431, B:Hep G2 , 7.5% SDS PAGE antibody diluted at 1:1000