

Datasheet for ABIN2856507

anti-MBNL3 antibody**2** Images[Go to Product page](#)

Overview

Quantity:	100 µL
Target:	MBNL3
Reactivity:	Human
Host:	Rabbit
Clonality:	Polyclonal
Conjugate:	This MBNL3 antibody is un-conjugated
Application:	Western Blotting (WB), Immunofluorescence (IF), Immunocytochemistry (ICC)

Product Details

Immunogen:	Recombinant protein encompassing a sequence within the center region of human MBNL3. The exact sequence is proprietary.
Isotype:	IgG
Cross-Reactivity:	Human
Characteristics:	Rabbit Polyclonal antibody to MBNL3 (muscleblind-like 3 (Drosophila)) MBNL3 antibody [N1C3]
Purification:	Purified by antigen-affinity chromatography.

Target Details

Target:	MBNL3
Alternative Name:	muscleblind like splicing regulator 3 (MBNL3 Products)

Target Details

Background: This gene encodes a member of the muscleblind-like family of proteins. The encoded protein may function in regulation of alternative splicing and may play a role in the pathophysiology of myotonic dystrophy. Alternatively spliced transcript variants have been described.

Molecular Weight: 39 kDa

Gene ID: 55796

UniProt: [Q9NUK0](#)

Pathways: [Regulation of Muscle Cell Differentiation, Skeletal Muscle Fiber Development](#)

Application Details

Application Notes: WB: 1:500-1:3000. ICC/IF: 1:100-1:1000. Optimal dilutions/concentrations should be determined by the researcher. Not tested in other applications.

Comment: Positive Control: A431 , Raji

Restrictions: For Research Use only

Handling

Format: Liquid

Concentration: 0.92 mg/mL

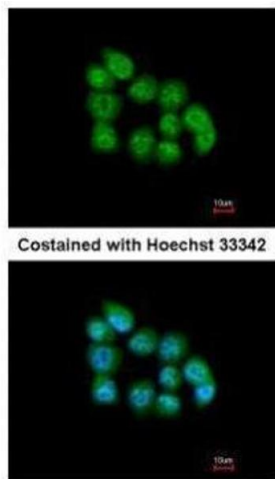
Buffer: 0.1M Tris-Glycine (pH 7), 10 % Glycerol, 0.01 % Thimerosal

Preservative: Thimerosal (Merthiolate)

Precaution of Use: This product contains Thimerosal (Merthiolate): a POISONOUS AND HAZARDOUS SUBSTANCE which should be handled by trained staff only.

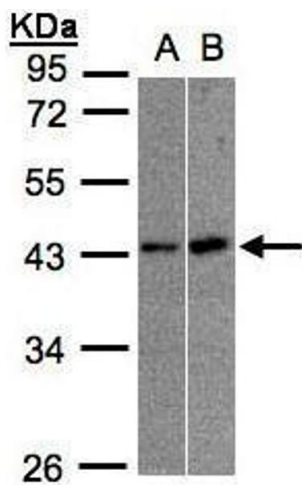
Storage: 4 °C,-20 °C

Storage Comment: Store as concentrated solution. Centrifuge briefly prior to opening vial. For short-term storage (1-2 weeks), store at 4°C. For long-term storage, aliquot and store at -20°C or below. Avoid multiple freeze-thaw cycles.



Immunofluorescence

Image 1. ICC/IF Image Immunofluorescence analysis of paraformaldehyde-fixed A431, using MBNL3, antibody at 1:200 dilution.



Western Blotting

Image 2. WB Image Sample(30 ug whole cell lysate) A:A431, B:Raji , 10% SDS PAGE antibody diluted at 1:1000