

Datasheet for ABIN2856508

**anti-SEPHS1 antibody****3** Images[Go to Product page](#)

## Overview

Quantity:	100 µL
Target:	SEPHS1
Reactivity:	Human
Host:	Rabbit
Clonality:	Polyclonal
Application:	Western Blotting (WB), Immunofluorescence (IF), Immunohistochemistry (Paraffin-embedded Sections) (IHC (p)), Immunocytochemistry (ICC)

## Product Details

Immunogen:	Recombinant protein encompassing a sequence within the center region of human Selenophosphate synthetase 1. The exact sequence is proprietary.
Isotype:	IgG
Cross-Reactivity:	Human
Characteristics:	Rabbit Polyclonal antibody to Selenophosphate synthetase 1 (selenophosphate synthetase 1) Selenophosphate synthetase 1 antibody
Purification:	Purified by antigen-affinity chromatography.

## Target Details

Target:	SEPHS1
Alternative Name:	selenophosphate synthetase 1 ( <a href="#">SEPHS1 Products</a> )
Background:	This protein encodes an enzyme that synthesizes selenophosphate from selenide and ATP.

## Target Details

Selenophosphate is the selenium donor used to synthesize selenocysteine, which is co-translationally incorporated into selenoproteins at in-frame UGA codons.

Molecular Weight: 43 kDa

Gene ID: 22929

UniProt: [P49903](#)

## Application Details

Application Notes: WB: 1:500-1:3000. ICC/IF: 1:100-1:1000. IHC-P: 1:100-1:1000. Optimal dilutions/concentrations should be determined by the researcher. Not tested in other applications.

Comment: Positive Control: A431 , Molt-4

Restrictions: For Research Use only

## Handling

Format: Liquid

Concentration: 0.92 mg/mL

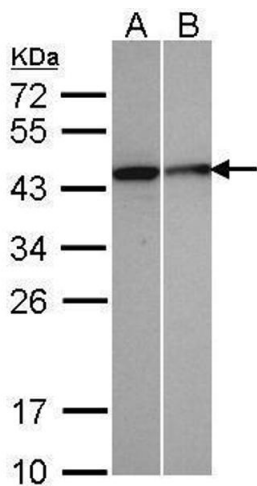
Buffer: 0.1M Tris-Glycine ( pH 7), 10 % Glycerol, 0.01 % Thimerosal

Preservative: Thimerosal (Merthiolate)

Precaution of Use: This product contains Thimerosal (Merthiolate): a POISONOUS AND HAZARDOUS SUBSTANCE which should be handled by trained staff only.

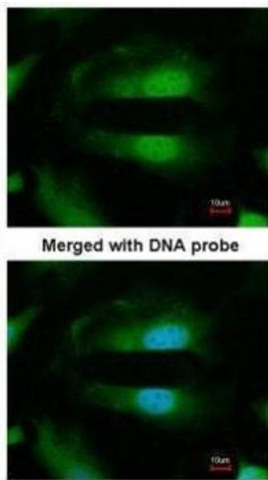
Storage: 4 °C,-20 °C

Storage Comment: Store as concentrated solution. Centrifuge briefly prior to opening vial. For short-term storage (1-2 weeks), store at 4°C. For long-term storage, aliquot and store at -20°C or below. Avoid multiple freeze-thaw cycles.



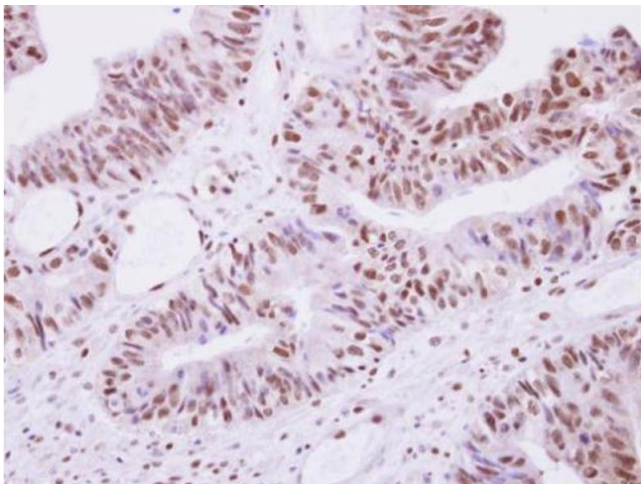
Western Blotting

**Image 1.** WB Image Sample(30 µg of whole cell lysate)  
A:A431, B:MOLT4, 12% SDS PAGE antibody diluted at 1:500



Immunofluorescence

**Image 2.** ICC/IF Image Immunofluorescence analysis of paraformaldehyde-fixed HeLa, using Selenophosphate synthetase 1, antibody at 1:200 dilution.



Immunohistochemistry

**Image 3.** IHC-P Image Selenophosphate synthetase 1 antibody detects SEPHS1 protein at nucleus on human colon carcinoma by immunohistochemical analysis. Sample: Paraffin-embedded colon carcinoma. Selenophosphate synthetase 1 antibody, dilution: 1:500.