



[Go to Product page](#)

Datasheet for ABIN2856511  
**anti-GK5 antibody (Center)**

2 Images

Overview

Quantity:	100 µL
Target:	GK5
Binding Specificity:	Center
Reactivity:	Human
Host:	Rabbit
Clonality:	Polyclonal
Conjugate:	This GK5 antibody is un-conjugated
Application:	Western Blotting (WB), Immunohistochemistry (Paraffin-embedded Sections) (IHC (p))

Product Details

Immunogen:	Recombinant protein encompassing a sequence within the center region of human GK5. The exact sequence is proprietary.
Isotype:	IgG
Cross-Reactivity:	Cow (Bovine)
Cross-Reactivity (Details):	Bovine (84 %)
Characteristics:	Rabbit Polyclonal antibody to GK5 (glycerol kinase 5 (putative)) GK5 antibody
Purification:	Purified by antigen-affinity chromatography.

## Target Details

---

Target: GK5

Alternative Name: GK5 ([GK5 Products](#))

Molecular Weight: 59 kDa

Gene ID: 256356

## Application Details

---

Application Notes: Suggested dilution Reference IHC (Formalin-fixed paraffin-embedded sections) 1:100-1:1000\*  
Western blot 1:500-1:3000\* Not tested in other applications. \*Optimal dilutions/concentrations should be determined by the researcher. Suggested dilution Reference IHC (Formalin-fixed paraffin-embedded sections) 1:100-1:1000\* Western blot 1:500-1:3000\*

Comment: Positive Control: 293T , A431 , Molt-4 , Raji

Restrictions: For Research Use only

## Handling

---

Format: Liquid

Concentration: 0.74 mg/mL

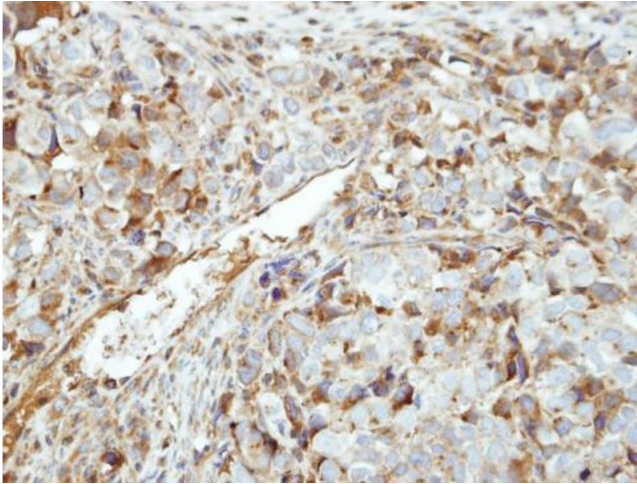
Buffer: 0.1M Tris, 0.1M Glycine, 10 % Glycerol ( pH 7). 0.01 % Thimerosal was added as a preservative.

Preservative: Thimerosal (Merthiolate)

Precaution of Use: This product contains Thimerosal (Merthiolate): a POISONOUS AND HAZARDOUS SUBSTANCE which should be handled by trained staff only.

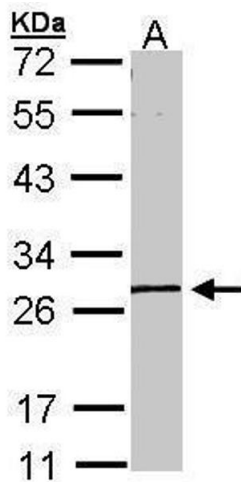
Storage: -20 °C

Storage Comment: Keep as concentrated solution. Aliquot and store at -20°C or below. Avoid multiple freeze-thaw cycles.



### Immunohistochemistry

**Image 1.** IHC-P Image Immunohistochemical analysis of paraffin-embedded CL1-0 xenograft, using GK5, antibody at 1:500 dilution.



### Western Blotting

**Image 2.** WB Image Sample (30 ug of whole cell lysate) A: A431, 10% SDS PAGE antibody diluted at 1:1000