

Datasheet for ABIN2856516

anti-STK25 antibody**3** Images[Go to Product page](#)

Overview

| | |
|--------------|--|
| Quantity: | 100 µL |
| Target: | STK25 |
| Reactivity: | Human |
| Host: | Rabbit |
| Clonality: | Polyclonal |
| Conjugate: | This STK25 antibody is un-conjugated |
| Application: | Western Blotting (WB), Immunohistochemistry (Paraffin-embedded Sections) (IHC (p)), Immunocytochemistry (ICC), Immunofluorescence (IF) |

Product Details

| | |
|-------------------|---|
| Immunogen: | Recombinant protein encompassing a sequence within the center region of human STK25. The exact sequence is proprietary. |
| Isotype: | IgG |
| Cross-Reactivity: | Human |
| Characteristics: | Rabbit Polyclonal antibody to STK25 (serine/threonine kinase 25 (STE20 homolog, yeast)) STK25 antibody [N1C1] |
| Purification: | Purified by antigen-affinity chromatography. |

Target Details

| | |
|-------------------|---|
| Target: | STK25 |
| Alternative Name: | serine/threonine kinase 25 (STK25 Products) |

Target Details

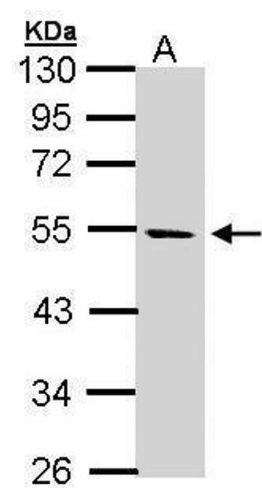
| | |
|-------------------|--|
| Background: | Oxidant stress-activated serine/threonine kinase that may play a role in the response to environmental stress. Targets to the Golgi apparatus where it appears to regulate protein transport events, cell adhesion, and polarity complexes important for cell migration. |
| | Cellular Localization: Cytoplasm , Golgi apparatus |
| Molecular Weight: | 48 kDa |
| Gene ID: | 10494 |
| UniProt: | O00506 |

Application Details

| | |
|--------------------|---|
| Application Notes: | WB: 1:500-1:3000. ICC/IF: 1:100-1:1000. IHC-P: 1:100-1:1000. Optimal dilutions/concentrations should be determined by the researcher. Not tested in other applications. |
| Restrictions: | For Research Use only |

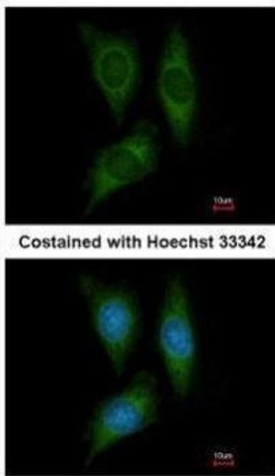
Handling

| | |
|--------------------|--|
| Format: | Liquid |
| Concentration: | 0.21 mg/mL |
| Buffer: | 1XPBS (pH 7), 1 % BSA, 20 % Glycerol, 0.025 % ProClin 300 |
| Preservative: | ProClin |
| Precaution of Use: | This product contains ProClin: a POISONOUS AND HAZARDOUS SUBSTANCE which should be handled by trained staff only. |
| Storage: | 4 °C,-20 °C |
| Storage Comment: | Store as concentrated solution. Centrifuge briefly prior to opening vial. For short-term storage (1-2 weeks), store at 4°C. For long-term storage, aliquot and store at -20°C or below. Avoid multiple freeze-thaw cycles. |



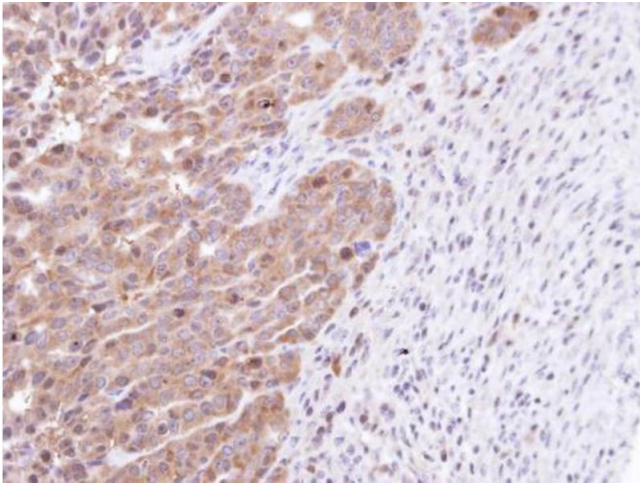
Western Blotting

Image 1. WB Image Sample (30 ug of whole cell lysate) A: HeLa S3 10% SDS PAGE antibody diluted at 1:1000



Immunofluorescence

Image 2. ICC/IF Image Immunofluorescence analysis of methanol-fixed HeLa, using STK25, antibody at 1:200 dilution.



Immunohistochemistry

Image 3. IHC-P Image Immunohistochemical analysis of paraffin-embedded NCIN87 xenograft, using STK25, antibody at 1:100 dilution.