

Datasheet for ABIN2856518
anti-PRPSAP2 antibody

5 Images

[Go to Product page](#)

Overview

Quantity:	100 µL
Target:	PRPSAP2
Reactivity:	Human
Host:	Rabbit
Clonality:	Polyclonal
Conjugate:	This PRPSAP2 antibody is un-conjugated
Application:	Western Blotting (WB), Immunofluorescence (IF), Immunocytochemistry (ICC), Immunohistochemistry (Paraffin-embedded Sections) (IHC (p))

Product Details

Immunogen:	Recombinant protein encompassing a sequence within the center region of human PRPSAP2. The exact sequence is proprietary.
Isotype:	IgG
Cross-Reactivity:	Hamster, Human, Mouse
Characteristics:	Rabbit Polyclonal antibody to PRPSAP2 (phosphoribosyl pyrophosphate synthetase-associated protein 2) PRPSAP2 antibody [N1C3]
Purification:	Purified by antigen-affinity chromatography.

Target Details

Target:	PRPSAP2
---------	---------

Target Details

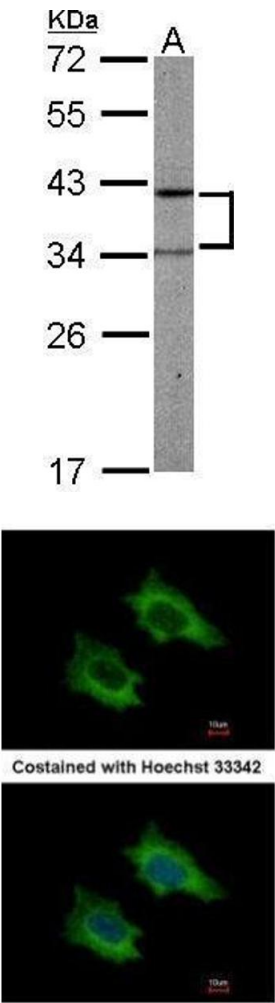
Alternative Name:	phosphoribosyl pyrophosphate synthetase associated protein 2 (PRPSAP2 Products)
Background:	The enzyme phosphoribosylpyrophosphate synthetase (PRS) catalyzes the formation of phosphoribosylpyrophosphate which is a substrate for synthesis of purine and pyrimidine nucleotides, histidine, tryptophan and NAD. PRS exists as a complex with two catalytic subunits and two associated subunits. This gene encodes a non-catalytic associated subunit of PRS.
Molecular Weight:	41 kDa
Gene ID:	5636
UniProt:	O60256

Application Details

Application Notes:	WB: 1:500-1:3000. ICC/IF: 1:100-1:1000. IHC-P: 1:100-1:1000. Optimal dilutions/concentrations should be determined by the researcher. Not tested in other applications.
Comment:	Positive Control: Mouse liver , HeLaS3
Restrictions:	For Research Use only

Handling

Format:	Liquid
Concentration:	1 mg/mL
Buffer:	0.1M Tris-Glycine (pH 7), 10 % Glycerol, 0.01 % Thimerosal
Preservative:	Thimerosal (Merthiolate)
Precaution of Use:	This product contains Thimerosal (Merthiolate): a POISONOUS AND HAZARDOUS SUBSTANCE which should be handled by trained staff only.
Storage:	4 °C,-20 °C
Storage Comment:	Store as concentrated solution. Centrifuge briefly prior to opening vial. For short-term storage (1-2 weeks), store at 4°C. For long-term storage, aliquot and store at -20°C or below. Avoid multiple freeze-thaw cycles.

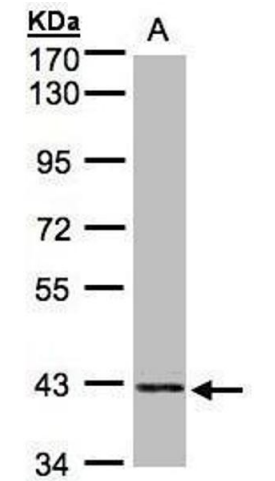


Western Blotting

Image 1. WB Image Sample (50 ug of whole cell lysate) A: mouse liver 12% SDS PAGE antibody diluted at 1:1000

Immunofluorescence

Image 2. ICC/IF Image Immunofluorescence analysis of methanol-fixed HeLa, using PRPSAP2, antibody at 1:500 dilution.



Western Blotting

Image 3. WB Image Sample (30µg whole cell lysate) A:HeLa S3, 7.5% SDS PAGE antibody diluted at 1:1000

Please check the [product details page](#) for more images. Overall 5 images are available for ABIN2856518.