

Datasheet for ABIN2856520

**anti-STK17A antibody**[Go to Product page](#)

## 2 Images

## Overview

Quantity:	100 µL
Target:	STK17A
Reactivity:	Human
Host:	Rabbit
Clonality:	Polyclonal
Conjugate:	This STK17A antibody is un-conjugated
Application:	Western Blotting (WB), Immunohistochemistry (Paraffin-embedded Sections) (IHC (p))

## Product Details

Immunogen:	Recombinant protein encompassing a sequence within the center region of human DRAK1. The exact sequence is proprietary.
Isotype:	IgG
Cross-Reactivity:	Human
Characteristics:	Rabbit polyclonal antibody to DRAK1 (serine/threonine kinase 17a) DRAK1 antibody [N1C1-2]
Purification:	Purified by antigen-affinity chromatography.

## Target Details

Target:	STK17A
Alternative Name:	serine/threonine kinase 17a ( <a href="#">STK17A Products</a> )

## Target Details

**Background:** This gene is a member of the DAP kinase-related apoptosis-inducing protein kinase family and encodes an autophosphorylated nuclear protein with a protein kinase domain. The protein has apoptosis-inducing activity.

Cellular Localization: Nucleus

**Molecular Weight:** 47 kDa

**Gene ID:** 9263

**UniProt:** [Q9UEE5](#)

## Application Details

**Application Notes:** WB: 1:500-1:3000. IHC-P: 1:100-1:1000. Optimal dilutions/concentrations should be determined by the researcher. Not tested in other applications.

**Comment:** Positive Control: HepG2

**Restrictions:** For Research Use only

## Handling

**Format:** Liquid

**Concentration:** 1.03 mg/mL

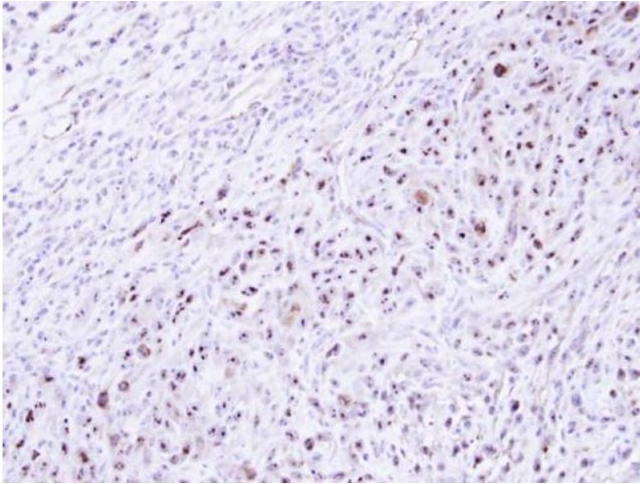
**Buffer:** 0.1M Tris-Glycine ( pH 7), 10 % Glycerol, 0.01 % Thimerosal

**Preservative:** Thimerosal (Merthiolate)

**Precaution of Use:** This product contains Thimerosal (Merthiolate): a POISONOUS AND HAZARDOUS SUBSTANCE which should be handled by trained staff only.

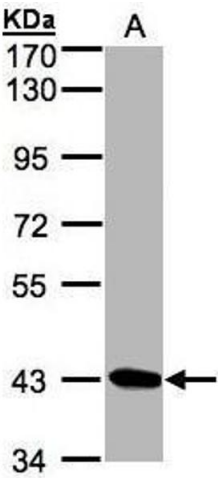
**Storage:** 4 °C,-20 °C

**Storage Comment:** Store as concentrated solution. Centrifuge briefly prior to opening vial. For short-term storage (1-2 weeks), store at 4°C. For long-term storage, aliquot and store at -20°C or below. Avoid multiple freeze-thaw cycles.



**Immunohistochemistry**

**Image 1.** IHC-P Image Immunohistochemical analysis of paraffin-embedded SAS xenograft , using DRAK1, antibody at 1:500 dilution.



**Western Blotting**

**Image 2.** WB Image Sample (30µg whole cell lysate) A:Hep G2 , 7.5% SDS PAGE antibody diluted at 1:1000