

Datasheet for ABIN2856522
anti-GOLM1 antibody (C-Term)



[Go to Product page](#)

5 Images

Overview

Quantity:	100 µL
Target:	GOLM1
Binding Specificity:	C-Term
Reactivity:	Human
Host:	Rabbit
Clonality:	Polyclonal
Conjugate:	This GOLM1 antibody is un-conjugated
Application:	Western Blotting (WB), Immunofluorescence (IF), Immunohistochemistry (Paraffin-embedded Sections) (IHC (p)), Immunocytochemistry (ICC)

Product Details

Immunogen:	Carrier-protein conjugated synthetic peptide encompassing a sequence within the C-terminus region of human GOLPH2. The exact sequence is proprietary.
Isotype:	IgG
Cross-Reactivity:	Human
Characteristics:	Rabbit Polyclonal antibody to GOLPH2 (golgi membrane protein 1) GOLPH2 antibody [C3], C-term
Purification:	Purified by antigen-affinity chromatography.
Grade:	KO Validated

Target Details

Target:	GOLM1
Alternative Name:	golgi membrane protein 1 (GOLM1 Products)
Background:	<p>The Golgi complex plays a key role in the sorting and modification of proteins exported from the endoplasmic reticulum. The protein encoded by this gene is a type II Golgi transmembrane protein. It processes protein synthesized in the rough endoplasmic reticulum and assists in the transport of protein cargo through the Golgi apparatus. The expression of this encoded protein has been observed to be upregulated in response to viral infection. Two alternatively spliced transcript variants encoding the same protein have been described for this gene.</p> <p>Cellular Localization: Golgi apparatus , cis-Golgi network membrane, Single-pass type II membrane protein</p>
Molecular Weight:	45 kDa
Gene ID:	51280
UniProt:	Q8NBJ4

Application Details

Application Notes:	WB: 1:500-1:3000. ICC/IF: 1:100-1:5000. IHC-P: 1:100-1:1000. Optimal dilutions/concentrations should be determined by the researcher. Not tested in other applications.
Comment:	Positive Control: HeLa membrane fraction , DU145 , 293T Validation: KO/KD, Orthogonal
Restrictions:	For Research Use only

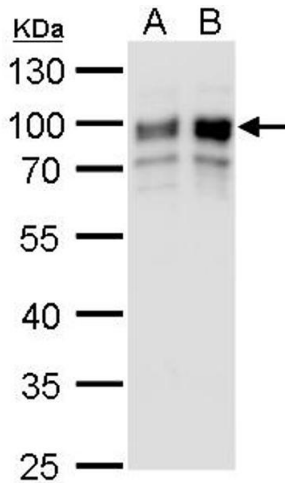
Handling

Format:	Liquid
Concentration:	1 mg/mL
Buffer:	1XPBS (pH 7), 20 % Glycerol, 0.01 % Thimerosal
Preservative:	Thimerosal (Merthiolate)
Precaution of Use:	This product contains Thimerosal (Merthiolate): a POISONOUS AND HAZARDOUS SUBSTANCE which should be handled by trained staff only.
Storage:	4 °C,-20 °C

Handling

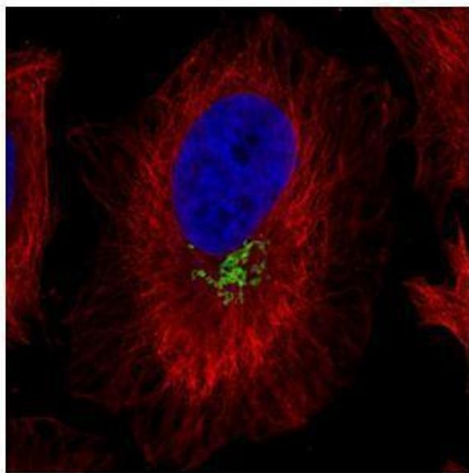
Storage Comment: Store as concentrated solution. Centrifuge briefly prior to opening vial. For short-term storage (1-2 weeks), store at 4°C. For long-term storage, aliquot and store at -20°C or below. Avoid multiple freeze-thaw cycles.

Images



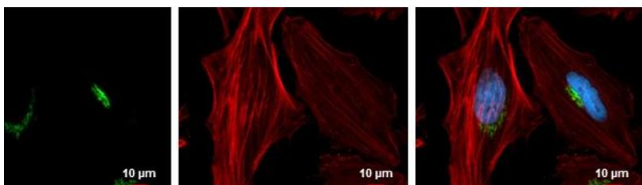
Western Blotting

Image 1. WB Image GOLPH2 antibody detects GOLPH2 protein by western blot analysis. A. 30 µg HeLa whole cell lysate/extract B. 30 µg HeLa membrane fraction lysate/extract 10 % SDS-PAGE GOLPH2 antibody , dilution: 1:500



Immunofluorescence

Image 2. ICC/IF Image Confocal immunofluorescence analysis (Olympus FV10i) of paraformaldehyde-fixed HeLa, using GOLPH2, antibody (Green) at 1:1000 dilution. Alpha-tubulin filaments were labeled with (Red) at 1:2500.



Immunofluorescence

Image 3. ICC/IF Image GOLPH2 antibody [C3], C-term detects GOLPH2 protein at Golgi apparatus by immunofluorescent analysis. Sample: HeLa cells were fixed in 4% paraformaldehyde at RT for 15 min. Green: GOLPH2 protein stained by GOLPH2 antibody [C3], C-term , diluted at 1:5000. Red: Phalloidin, a F-actin marker. Blue: Hoechst 33342 staining. Scale bar = 10 µm.

Please check the [product details page](#) for more images. Overall 5 images are available for ABIN2856522.