

Datasheet for ABIN2856523
anti-CDC37L1 antibody (C-Term)[Go to Product page](#)

1 Image

Overview

Quantity:	100 µL
Target:	CDC37L1
Binding Specificity:	C-Term
Reactivity:	Human
Host:	Rabbit
Clonality:	Polyclonal
Conjugate:	This CDC37L1 antibody is un-conjugated
Application:	Western Blotting (WB)

Product Details

Immunogen:	Carrier-protein conjugated synthetic peptide encompassing a sequence within the C-terminus region of human CDC37L1. The exact sequence is proprietary.
Isotype:	IgG
Cross-Reactivity:	Rhesus Monkey
Cross-Reactivity (Details):	Rhesus Monkey (100 %)
Characteristics:	Rabbit polyclonal antibody to CDC37L1 (cell division cycle 37 homolog (S. cerevisiae)-like 1) CDC37L1 antibody [C2C3], C-term
Purification:	Purified by antigen-affinity chromatography.

Target Details

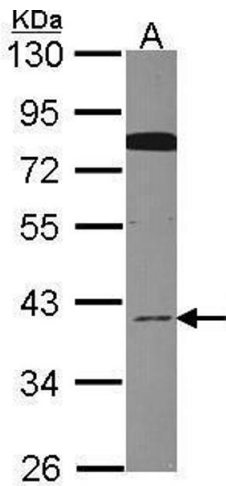
Target:	CDC37L1
Alternative Name:	CDC37L1 (CDC37L1 Products)
Background:	CDC37L1 is a cytoplasmic phosphoprotein that exists in complex with HSP90 (HSPCA, MIM 140571) as well as several other proteins involved in HSP90-mediated protein folding (Scholz et al., 2001 [PubMed 11413142]).[supplied by OMIM] Cellular Localization: Cytoplasm
Molecular Weight:	39 kDa
Gene ID:	55664

Application Details

Application Notes:	Suggested dilution Reference Western blot 1:500-1:3000* Not tested in other applications. *Optimal dilutions/concentrations should be determined by the researcher.Suggested dilutionReferenceWestern blot1:500-1:3000*
Comment:	Positive Control: HeLa
Restrictions:	For Research Use only

Handling

Format:	Liquid
Concentration:	0.59 mg/mL
Buffer:	0.1M Tris, 0.1M Glycine, 10 % Glycerol (pH 7). 0.01 % Thimerosal was added as a preservative.
Preservative:	Thimerosal (Merthiolate)
Precaution of Use:	This product contains Thimerosal (Merthiolate): a POISONOUS AND HAZARDOUS SUBSTANCE which should be handled by trained staff only.
Storage:	-20 °C
Storage Comment:	Keep as concentrated solution. Aliquot and store at -20°C or below. Avoid multiple freeze-thaw cycles.



Western Blotting

Image 1. WB Image Sample (30 ug of whole cell lysate) A:
Hela 10% SDS PAGE antibody diluted at 1:1000