

Datasheet for ABIN2856524
anti-VPS11 antibody (Center)

3 Images

[Go to Product page](#)

Overview

Quantity:	100 µL
Target:	VPS11
Binding Specificity:	Center
Reactivity:	Human
Host:	Rabbit
Clonality:	Polyclonal
Conjugate:	This VPS11 antibody is un-conjugated
Application:	Western Blotting (WB), Immunohistochemistry (Paraffin-embedded Sections) (IHC (p)), Immunofluorescence (IF), Immunocytochemistry (ICC)

Product Details

Immunogen:	Carrier-protein conjugated synthetic peptide encompassing a sequence within the center region of human VPS11. The exact sequence is proprietary.
Isotype:	IgG
Cross-Reactivity:	Mouse (Murine), Rat (Rattus), Zebrafish (Danio rerio), Medaka, Xenopus tropicalis, Cow (Bovine)
Cross-Reactivity (Details):	Mouse (100 %), Rat (100 %), Zebrafish (85 %), Japanese Medaka (100 %), Xenopus Tropicalis (92 %), Bovine (100 %)
Characteristics:	Rabbit Polyclonal antibody to VPS11 (vacuolar protein sorting 11 homolog (S. cerevisiae)) VPS11 antibody
Purification:	Purified by antigen-affinity chromatography.

Target Details

Target:	VPS11
Alternative Name:	VPS11 (VPS11 Products)
Background:	<p>Vesicle mediated protein sorting plays an important role in segregation of intracellular molecules into distinct organelles. Genetic studies in yeast have identified more than 40 vacuolar protein sorting (VPS) genes involved in vesicle transport to vacuoles. This gene encodes the human homolog of yeast class C Vps11 protein. The mammalian class C Vps proteins are predominantly associated with late endosomes/lysosomes, and like their yeast counterparts, may mediate vesicle trafficking steps in the endosome/lysosome pathway.</p> <p>Cellular Localization: Late endosome membrane, Peripheral membrane protein, Cytoplasmic side , Lysosome membrane, Peripheral membrane protein, Cytoplasmic side</p>
Molecular Weight:	108 kDa
Gene ID:	55823
Pathways:	SARS-CoV-2 Protein Interactome

Application Details

Application Notes:	<p>Suggested dilution Reference ICC/IF 1:100-1:1000* IHC (Formalin-fixed paraffin-embedded sections) 1:100-1:1000* Western blot 1:500-1:3000* Not tested in other applications. *Optimal dilutions/concentrations should be determined by the researcher.Suggested dilutionReferenceICC/IF1:100-1:1000* IHC (Formalin-fixed paraffin-embedded sections)1:100-1:1000* Western blot1:500-1:3000*</p>
Comment:	Positive Control: 293T , HepG2
Restrictions:	For Research Use only

Handling

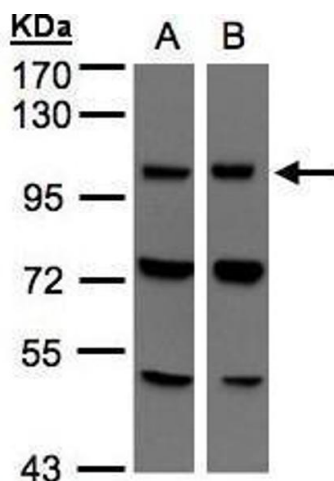
Format:	Liquid
Concentration:	1 mg/mL
Buffer:	0.1M Tris, 0.1M Glycine, 10 % Glycerol (pH 7). 0.01 % Thimerosal was added as a preservative.
Preservative:	Thimerosal (Merthiolate)
Precaution of Use:	This product contains Thimerosal (Merthiolate): a POISONOUS AND HAZARDOUS SUBSTANCE which should be handled by trained staff only.

Handling

Storage: -20 °C

Storage Comment: Keep as concentrated solution. Aliquot and store at -20°C or below. Avoid multiple freeze-thaw cycles.

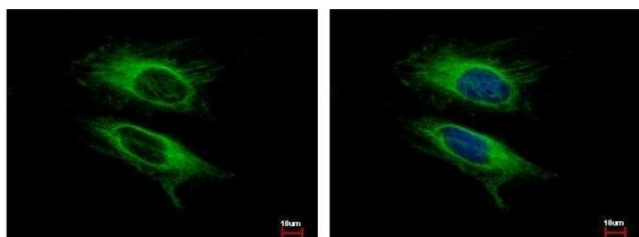
Images



Western Blotting

Image 1. WB Image Sample(30 µg of whole cell lysate)

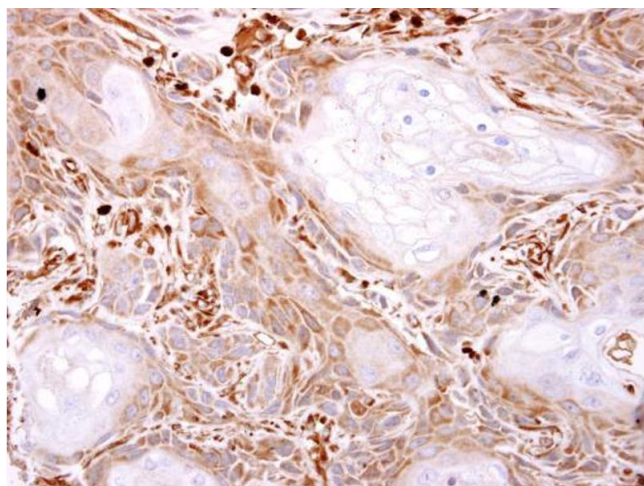
A:293T B:Hep G2, 7.5% SDS PAGE antibody diluted at 1:500



Immunofluorescence

Image 2. ICC/IF Image VPS11 antibody detects VPS11 protein at cytoplasm by immunofluorescent analysis.

Sample: HeLa cells were fixed in -20°C 100% MeOH for 5 min. Green: VPS11 protein stained by VPS11 antibody, diluted at 1:500. Blue: Hoechst 33343 staining.



Immunohistochemistry

Image 3. IHC-P Image VPS11 antibody detects VPS11 protein at cytosol on Ca922 xenograft by immunohistochemical analysis.

Sample: Paraffin-embedded Ca922 xenograft. VPS11 antibody, dilution: 1:500.