

Datasheet for ABIN2856529
anti-HPS6 antibody (Internal Region)[Go to Product page](#)

1 Image

Overview

Quantity:	100 µL
Target:	HPS6
Binding Specificity:	Internal Region
Reactivity:	Human
Host:	Rabbit
Clonality:	Polyclonal
Conjugate:	This HPS6 antibody is un-conjugated
Application:	Western Blotting (WB)

Product Details

Immunogen:	Carrier-protein conjugated synthetic peptide encompassing a sequence within the center region of human HPS6. The exact sequence is proprietary.
Isotype:	IgG
Cross-Reactivity:	Pig (Porcine), Rhesus Monkey, Cow (Bovine)
Cross-Reactivity (Details):	Pig (92 %), Rhesus Monkey (100 %), Bovine (91 %)
Characteristics:	Rabbit polyclonal antibody to HPS6 (Hermansky-Pudlak syndrome 6) HPS6 antibody [C1], Internal
Purification:	Purified by antigen-affinity chromatography.

Target Details

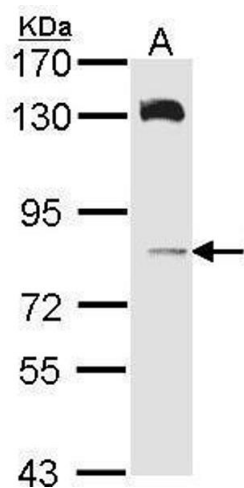
Target:	HPS6
Alternative Name:	HPS6 (HPS6 Products)
Background:	This intronless gene encodes a protein that may play a role in organelle biogenesis associated with melanosomes, platelet dense granules, and lysosomes. This protein interacts with Hermansky-Pudlak syndrome 5 protein. Mutations in this gene are associated with Hermansky-Pudlak syndrome type 6.
Molecular Weight:	83 kDa
Gene ID:	79803

Application Details

Application Notes:	Suggested dilution Reference Western blot 1:500-1:3000* Not tested in other applications. *Optimal dilutions/concentrations should be determined by the researcher.Suggested dilutionReferenceWestern blot1:500-1:3000*
Comment:	Positive Control: A431 , H1299 , HeLa , HepG2
Restrictions:	For Research Use only

Handling

Format:	Liquid
Concentration:	1 mg/mL
Buffer:	0.1M Tris, 0.1M Glycine, 10 % Glycerol (pH 7). 0.01 % Thimerosal was added as a preservative.
Preservative:	Thimerosal (Merthiolate)
Precaution of Use:	This product contains Thimerosal (Merthiolate): a POISONOUS AND HAZARDOUS SUBSTANCE which should be handled by trained staff only.
Storage:	-20 °C
Storage Comment:	Keep as concentrated solution. Aliquot and store at -20°C or below. Avoid multiple freeze-thaw cycles.



Western Blotting

Image 1. WB Image Sample (30 ug of whole cell lysate) A:
A431 , 7.5% SDS PAGE antibody diluted at 1:1000