

Datasheet for ABIN2856531  
**anti-OSBPL6 antibody (C-Term)**

## 3 Images

[Go to Product page](#)

## Overview

Quantity:	100 µL
Target:	OSBPL6
Binding Specificity:	C-Term
Reactivity:	Human
Host:	Rabbit
Clonality:	Polyclonal
Conjugate:	This OSBPL6 antibody is un-conjugated
Application:	Western Blotting (WB), Immunohistochemistry (Paraffin-embedded Sections) (IHC (p)), Immunocytochemistry (ICC), Immunofluorescence (IF)

## Product Details

Immunogen:	Carrier-protein conjugated synthetic peptide encompassing a sequence within the C-terminus region of human OSBPL6. The exact sequence is proprietary.
Isotype:	IgG
Cross-Reactivity:	Human
Characteristics:	Rabbit Polyclonal antibody to OSBPL6 (oxysterol-binding protein-related protein 6) OSBPL6 antibody [C3], C-term
Purification:	Purified by antigen-affinity chromatography.

## Target Details

Target:	OSBPL6
---------	--------

## Target Details

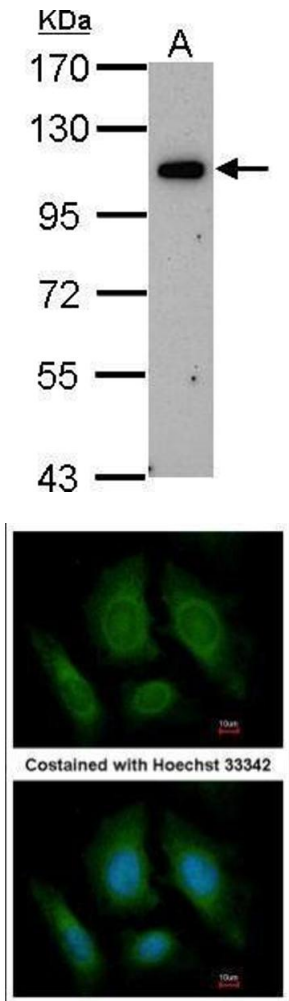
Alternative Name:	oxysterol binding protein like 6 ( <a href="#">OSBPL6 Products</a> )
Background:	This gene encodes a member of the oxysterol-binding protein (OSBP) family, a group of intracellular lipid receptors. Most members contain an N-terminal pleckstrin homology domain and a highly conserved C-terminal OSBP-like sterol-binding domain. Transcript variants encoding different isoforms have been identified.
Molecular Weight:	106 kDa
Gene ID:	114880
UniProt:	<a href="#">Q9BZF3</a>

## Application Details

Application Notes:	WB: 1:500-1:3000. ICC/IF: 1:100-1:1000. IHC-P: 1:100-1:1000. Optimal dilutions/concentrations should be determined by the researcher. Not tested in other applications.
Comment:	Positive Control: U87-MG
Restrictions:	For Research Use only

## Handling

Format:	Liquid
Concentration:	1 mg/mL
Buffer:	0.1M Tris-Glycine ( pH 7), 10 % Glycerol, 0.01 % Thimerosal
Preservative:	Thimerosal (Merthiolate)
Precaution of Use:	This product contains Thimerosal (Merthiolate): a POISONOUS AND HAZARDOUS SUBSTANCE which should be handled by trained staff only.
Storage:	4 °C,-20 °C
Storage Comment:	Store as concentrated solution. Centrifuge briefly prior to opening vial. For short-term storage (1-2 weeks), store at 4°C. For long-term storage, aliquot and store at -20°C or below. Avoid multiple freeze-thaw cycles.

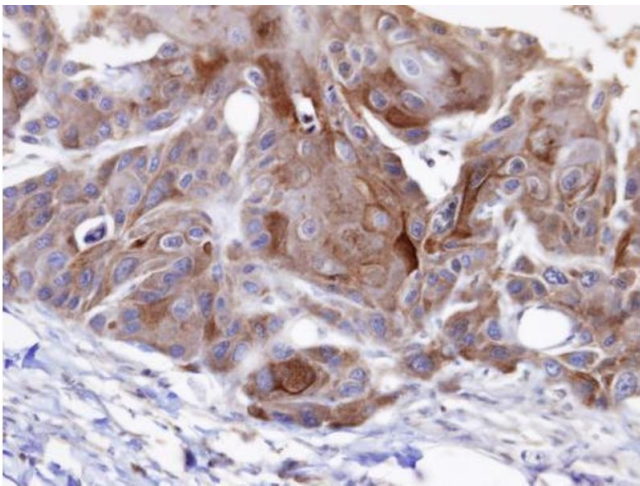


### Western Blotting

**Image 1.** WB Image Sample (30 ug of whole cell lysate) A:  
U87-MG 7.5% SDS PAGE antibody diluted at 1:1000

### Immunofluorescence

**Image 2.** ICC/IF Image Immunofluorescence analysis of  
paraformaldehyde-fixed HeLa, using OSBPL6, antibody at  
1:200 dilution.



### Immunohistochemistry

**Image 3.** IHC-P Image Immunohistochemical analysis of  
paraffin-embedded SCC15 xenograft, using OSBPL6 ,  
antibody at 1:100 dilution.