

Datasheet for ABIN2856532
anti-EVC2 antibody (C-Term)

2 Images

[Go to Product page](#)

Overview

Quantity:	100 µL
Target:	EVC2
Binding Specificity:	C-Term
Reactivity:	Human
Host:	Rabbit
Clonality:	Polyclonal
Conjugate:	This EVC2 antibody is un-conjugated
Application:	Western Blotting (WB), Immunofluorescence (IF), Immunocytochemistry (ICC)

Product Details

Immunogen:	Carrier-protein conjugated synthetic peptide encompassing a sequence within the C-terminus region of human EVC2. The exact sequence is proprietary.
Isotype:	IgG
Cross-Reactivity:	Mouse (Murine)
Cross-Reactivity (Details):	Mouse (85 %)
Characteristics:	Rabbit Polyclonal antibody to EVC2 (Ellis van Creveld syndrome 2) EVC2 antibody [C3], C-term
Purification:	Purified by antigen-affinity chromatography.

Target Details

Target:	EVC2
Alternative Name:	EVC2 (EVC2 Products)
Background:	<p>This gene encodes a protein that functions in bone formation and skeletal development. Mutations in this gene, as well as in a neighboring gene that lies in a head-to-head configuration, cause Ellis-van Creveld syndrome, an autosomal recessive skeletal dysplasia that is also known as chondroectodermal dysplasia. Mutations in this gene also cause acrofacial dysostosis Weyers type, also referred to as Curry-Hall syndrome, a disease that combines limb and facial abnormalities. Alternative splicing results in multiple transcript variants.</p> <p>Cellular Localization: Membrane, Multi-pass membrane protein</p>
Molecular Weight:	148 kDa
Gene ID:	132884
Pathways:	Hedgehog Signaling

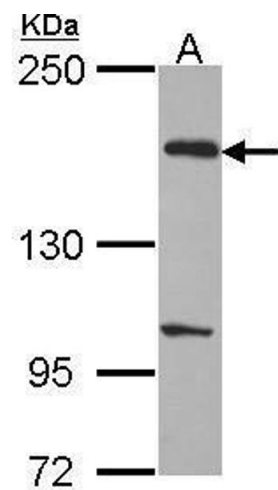
Application Details

Application Notes:	Suggested dilution Reference ICC/IF 1:100-1:1000* Western blot 1:500-1:3000* Not tested in other applications. *Optimal dilutions/concentrations should be determined by the researcher.Suggested dilutionReferenceICC/IF1:100-1:1000* Western blot1:500-1:3000*
Comment:	Positive Control: A431 , H1299 , HeLa , HepG2
Restrictions:	For Research Use only

Handling

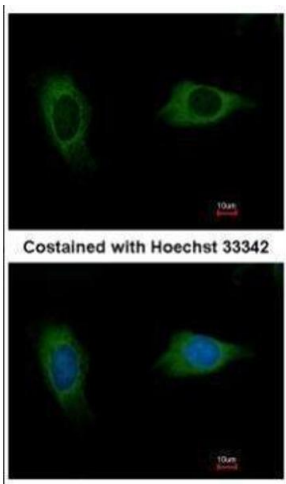
Format:	Liquid
Concentration:	1 mg/mL
Buffer:	0.1M Tris, 0.1M Glycine, 10 % Glycerol (pH 7). 0.01 % Thimerosal was added as a preservative.
Preservative:	Thimerosal (Merthiolate)
Precaution of Use:	This product contains Thimerosal (Merthiolate): a POISONOUS AND HAZARDOUS SUBSTANCE which should be handled by trained staff only.
Storage:	-20 °C
Storage Comment:	Keep as concentrated solution. Aliquot and store at -20°C or below. Avoid multiple freeze-thaw

cycles.



Western Blotting

Image 1. WB Image Sample (30 ug of whole cell lysate) A: H1299 5% SDS PAGE EVC2 antibody antibody diluted at 1:1000



Immunofluorescence

Image 2. ICC/IF Image Immunofluorescence analysis of methanol-fixed HeLa, using EVC2, antibody at 1:500 dilution.