

Datasheet for ABIN2856536
anti-HPS3 antibody (C-Term)

3 Images

[Go to Product page](#)

Overview

Quantity:	100 µL
Target:	HPS3
Binding Specificity:	C-Term
Reactivity:	Human
Host:	Rabbit
Clonality:	Polyclonal
Conjugate:	This HPS3 antibody is un-conjugated
Application:	Western Blotting (WB), Immunohistochemistry (Paraffin-embedded Sections) (IHC (p)), Immunofluorescence (IF), Immunocytochemistry (ICC)

Product Details

Immunogen:	Carrier-protein conjugated synthetic peptide encompassing a sequence within the C-terminus region of human HPS3. The exact sequence is proprietary.
Isotype:	IgG
Cross-Reactivity:	Pig (Porcine), Cow (Bovine)
Cross-Reactivity (Details):	Pig (92 %), Bovine (92 %)
Characteristics:	Rabbit Polyclonal antibody to HPS3 (Hermansky-Pudlak syndrome 3) HPS3 antibody [C3], C-term
Purification:	Purified by antigen-affinity chromatography.

Target Details

Target:	HPS3
Alternative Name:	HPS3 (HPS3 Products)
Background:	<p>This gene encodes a protein containing a potential clathrin-binding motif, consensus dileucine signals, and tyrosine-based sorting signals for targeting to vesicles of lysosomal lineage. The encoded protein may play a role in organelle biogenesis associated with melanosomes, platelet dense granules, and lysosomes. Mutations in this gene are associated with Hermansky-Pudlak syndrome type 3. Alternate splice variants exist, but their full length sequence has not been determined.</p> <p>Cellular Localization: Cytoplasm</p>
Molecular Weight:	114 kDa
Gene ID:	84343

Application Details

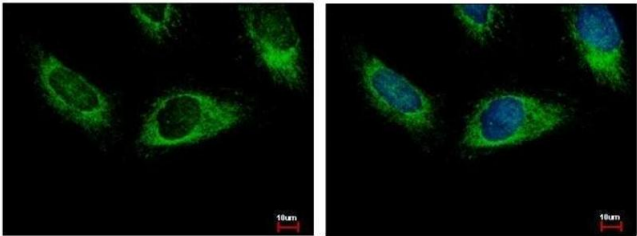
Application Notes:	<p>Suggested dilution Reference ICC/IF 1:100-1:1000* IHC (Formalin-fixed paraffin-embedded sections) 1:100-1:1000* Western blot 1:500-1:3000* Not tested in other applications. *Optimal dilutions/concentrations should be determined by the researcher.Suggested dilutionReferenceICC/IF1:100-1:1000* IHC (Formalin-fixed paraffin-embedded sections)1:100-1:1000* Western blot1:500-1:3000*</p>
Comment:	Positive Control: 293T , A431 , H1299 , HeLaS3 , HepG2 , Molt-4 , Raji
Restrictions:	For Research Use only

Handling

Format:	Liquid
Concentration:	0.92 mg/mL
Buffer:	0.1M Tris, 0.1M Glycine, 10 % Glycerol (pH 7). 0.01 % Thimerosal was added as a preservative.
Preservative:	Thimerosal (Merthiolate)
Precaution of Use:	This product contains Thimerosal (Merthiolate): a POISONOUS AND HAZARDOUS SUBSTANCE which should be handled by trained staff only.
Storage:	-20 °C
Storage Comment:	Keep as concentrated solution. Aliquot and store at -20°C or below. Avoid multiple freeze-thaw

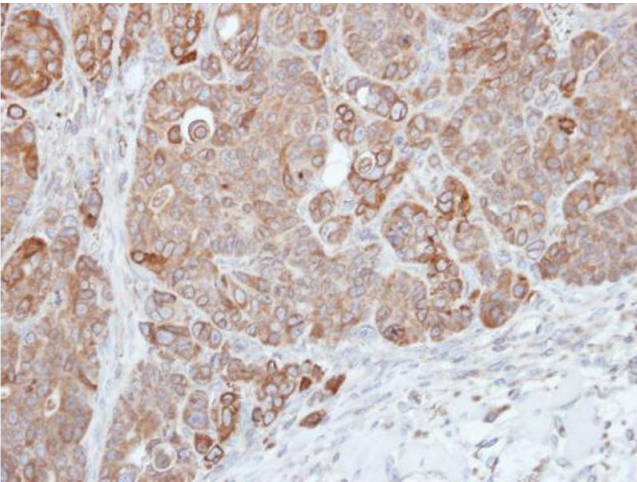
cycles.

Images



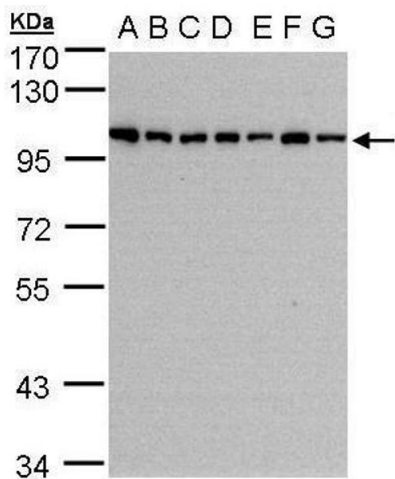
Immunofluorescence

Image 1. ICC/IF Image HPS3 antibody [C3], C-term detects HPS3 protein at cytoplasm by immunofluorescent analysis. Sample: HeLa cells were fixed in 4% paraformaldehyde at RT for 15 min. Green: HPS3 protein stained by HPS3 antibody [C3], C-term , diluted at 1:500. Blue: Hoechst 33343 staining.



Immunohistochemistry

Image 2. IHC-P Image Immunohistochemical analysis of paraffin-embedded SW480 xenograft, using HPS3, antibody at 1:500 dilution.



Western Blotting

Image 3. WB Image Sample(30 µg of whole cell lysate) A:293T B:A431 , C:H1299 D:HeLa S3 , E:Hep G2 , F:MOLT4 , G:Raji , 7.5% SDS PAGE antibody diluted at 1:1000