

Datasheet for ABIN2856538
anti-PIK3R3 antibody (Center)[Go to Product page](#)

3 Images

Overview

Quantity:	100 µL
Target:	PIK3R3
Binding Specificity:	Center
Reactivity:	Human, Rat
Host:	Rabbit
Clonality:	Polyclonal
Application:	Western Blotting (WB), Immunohistochemistry (Paraffin-embedded Sections) (IHC (p))

Product Details

Immunogen:	Recombinant protein encompassing a sequence within the center region of human PIK3R3. The exact sequence is proprietary.
Isotype:	IgG
Characteristics:	Rabbit Polyclonal antibody to PIK3R3 (phosphoinositide-3-kinase, regulatory subunit 3 (gamma)) PIK3R3 antibody
Purification:	Purified by antigen-affinity chromatography.

Target Details

Target:	PIK3R3
Alternative Name:	PIK3R3 (PIK3R3 Products)
Molecular Weight:	54 kDa

Target Details

Gene ID: 8503

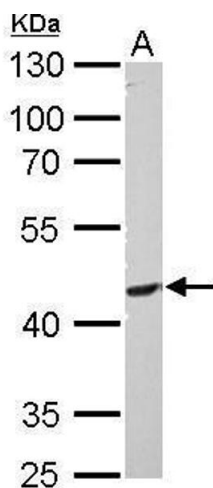
Application Details

Application Notes:	Suggested dilution Reference IHC (Formalin-fixed paraffin-embedded sections) 1:100-1:1000* Western blot 1:500-1:3000* Not tested in other applications. *Optimal dilutions/concentrations should be determined by the researcher.Suggested dilutionReferenceIHC (Formalin-fixed paraffin-embedded sections)1:100-1:1000* Western blot1:500-1:3000*
Comment:	Positive Control: A431 , PC-12
Restrictions:	For Research Use only

Handling

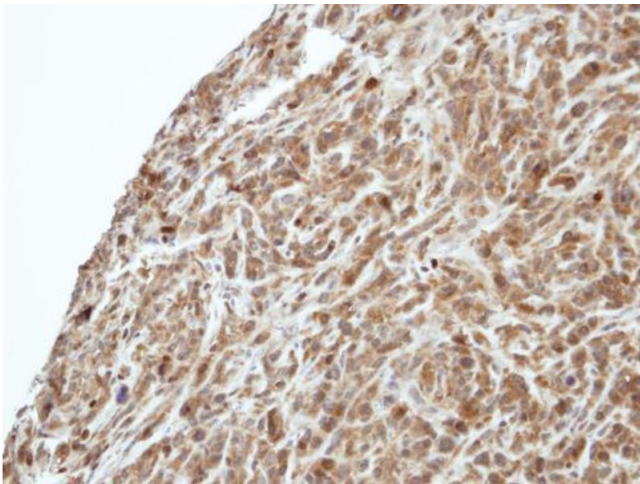
Format:	Liquid
Concentration:	1 mg/mL
Buffer:	0.1M Tris, 0.1M Glycine, 10 % Glycerol (pH 7). 0.01 % Thimerosal was added as a preservative.
Preservative:	Thimerosal (Merthiolate)
Precaution of Use:	This product contains Thimerosal (Merthiolate): a POISONOUS AND HAZARDOUS SUBSTANCE which should be handled by trained staff only.
Storage:	-20 °C
Storage Comment:	Keep as concentrated solution. Aliquot and store at -20°C or below. Avoid multiple freeze-thaw cycles.

Validation report #101762 for Western Blotting (WB)



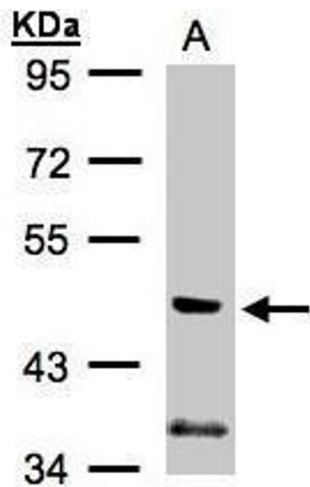
Western Blotting

Image 1. WB Image PIK3R3 antibody detects PIK3R3 protein by Western blot analysis. A. 30 µg PC-12 whole cell lysate/extract 10 % SDS-PAGE PIK3R3 antibody , dilution: 1:1000



Immunohistochemistry

Image 2. IHC-P Image Immunohistochemical analysis of paraffin-embedded SAS xenograft, using PIK3R3, antibody at 1:500 dilution.



Western Blotting

Image 3. WB Image Sample (30µg whole cell lysate) A:A431, 7.5% SDS PAGE antibody diluted at 1:1000