

Datasheet for ABIN2856542

anti-DYRK3 antibody**2** Images[Go to Product page](#)

Overview

Quantity:	100 µL
Target:	DYRK3
Reactivity:	Human
Host:	Rabbit
Clonality:	Polyclonal
Conjugate:	This DYRK3 antibody is un-conjugated
Application:	Western Blotting (WB)

Product Details

Immunogen:	Recombinant protein encompassing a sequence within the center region of human Dyrk3. The exact sequence is proprietary.
Isotype:	IgG
Cross-Reactivity:	Human, Mouse
Characteristics:	Rabbit Polyclonal antibody to Dyrk3 (dual-specificity tyrosine-(Y)-phosphorylation regulated kinase 3) Dyrk3 antibody
Purification:	Purified by antigen-affinity chromatography.

Target Details

Target:	DYRK3
Alternative Name:	dual specificity tyrosine phosphorylation regulated kinase 3 (DYRK3 Products)

Target Details

Background: This gene product belongs to the DYRK family of dual-specificity protein kinases that catalyze autophosphorylation on serine/threonine and tyrosine residues. The members of this family share structural similarity, however, differ in their substrate specificity, suggesting their involvement in different cellular functions. The encoded protein has been shown to autophosphorylate on tyrosine residue and catalyze phosphorylation of histones H3 and H2B in vitro. Alternatively spliced transcript variants encoding different isoforms have been identified.

Cellular Localization: Nucleus

Molecular Weight: 66 kDa

Gene ID: 8444

UniProt: [O43781](#)

Pathways: [Negative Regulation of Hormone Secretion](#), [Regulation of Lipid Metabolism by PPARalpha](#)

Application Details

Application Notes: WB: 1:500-1:3000. Optimal dilutions/concentrations should be determined by the researcher. Not tested in other applications.

Restrictions: For Research Use only

Handling

Format: Liquid

Concentration: 0.68 mg/mL

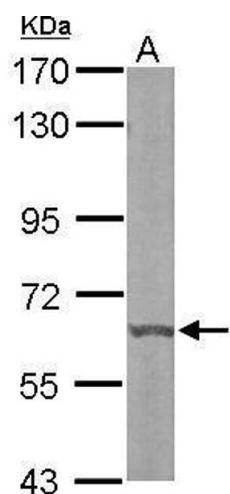
Buffer: 0.1M Tris-Glycine (pH 7), 10 % Glycerol, 0.01 % Thimerosal

Preservative: Thimerosal (Merthiolate)

Precaution of Use: This product contains Thimerosal (Merthiolate): a POISONOUS AND HAZARDOUS SUBSTANCE which should be handled by trained staff only.

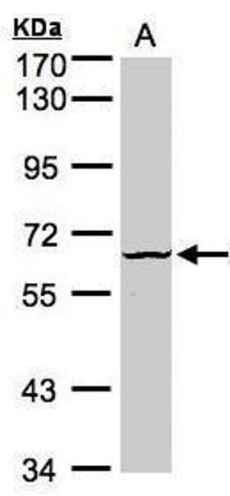
Storage: 4 °C,-20 °C

Storage Comment: Store as concentrated solution. Centrifuge briefly prior to opening vial. For short-term storage (1-2 weeks), store at 4°C. For long-term storage, aliquot and store at -20°C or below. Avoid multiple freeze-thaw cycles.



Western Blotting

Image 1. WB Image Sample (50 ug of whole cell lysate) A: mouse liver 7.5% SDS PAGE antibody diluted at 1:1000



Western Blotting

Image 2. WB Image Sample (30µg whole cell lysate) A:Raji , 7.5% SDS PAGE antibody diluted at 1:1000