

Datasheet for ABIN2856543

anti-Copine III antibody**3** Images[Go to Product page](#)

Overview

Quantity:	100 µL
Target:	Copine III (CPNE3)
Reactivity:	Human
Host:	Rabbit
Clonality:	Polyclonal
Conjugate:	This Copine III antibody is un-conjugated
Application:	Western Blotting (WB), Immunohistochemistry (Paraffin-embedded Sections) (IHC (p))

Product Details

Immunogen:	Recombinant protein encompassing a sequence within the center region of human Copine 3. The exact sequence is proprietary.
Isotype:	IgG
Cross-Reactivity:	Human, Mouse
Characteristics:	Rabbit Polyclonal antibody to Copine 3 (copine III) Copine 3 antibody [N3C3]
Purification:	Purified by antigen-affinity chromatography.

Target Details

Target:	Copine III (CPNE3)
Alternative Name:	copine 3 (CPNE3 Products)

Target Details

Background: Calcium-dependent membrane-binding proteins may regulate molecular events at the interface of the cell membrane and cytoplasm. This gene encodes a protein which contains two type II C2 domains in the amino-terminus and an A domain-like sequence in the carboxy-terminus. The A domain mediates interactions between integrins and extracellular ligands.

Molecular Weight: 60 kDa

Gene ID: 8895

UniProt: [O75131](#)

Application Details

Application Notes: WB: 1:500-1:3000. IHC-P: 1:100-1:1000. Optimal dilutions/concentrations should be determined by the researcher. Not tested in other applications.

Comment: Positive Control: Mouse brain , HeLaS3 , HepG2

Restrictions: For Research Use only

Handling

Format: Liquid

Concentration: 0.54 mg/mL

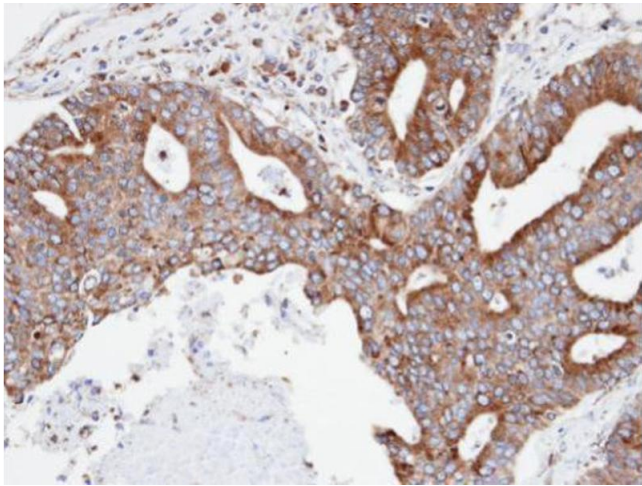
Buffer: 0.1M Tris-Glycine (pH 7), 10 % Glycerol, 0.01 % Thimerosal

Preservative: Thimerosal (Merthiolate)

Precaution of Use: This product contains Thimerosal (Merthiolate): a POISONOUS AND HAZARDOUS SUBSTANCE which should be handled by trained staff only.

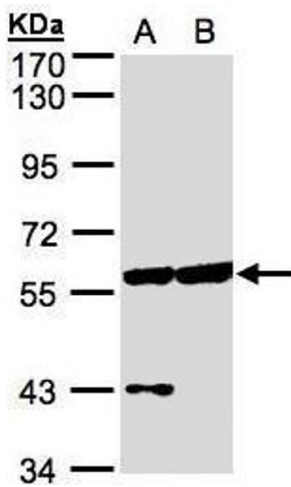
Storage: 4 °C,-20 °C

Storage Comment: Store as concentrated solution. Centrifuge briefly prior to opening vial. For short-term storage (1-2 weeks), store at 4°C. For long-term storage, aliquot and store at -20°C or below. Avoid multiple freeze-thaw cycles.



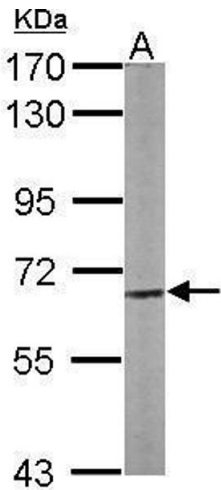
Immunohistochemistry

Image 1. IHC-P Image Immunohistochemical analysis of paraffin-embedded human endometrial ovarian cancer, using CPNE3, antibody at 1:100 dilution.



Western Blotting

Image 2. WB Image Sample (30 µg of whole cell lysate) A: HeLa S3, B: Hep G2, 7.5% SDS PAGE antibody diluted at 1:500



Western Blotting

Image 3. WB Image Sample (50 µg of whole cell lysate) A: Mouse brain 7.5% SDS PAGE antibody diluted at 1:1000